



B ROUSSARD GROUP
Office Furniture, Systems and Services

PROPOSAL: 45564
DATE: 03/31/14

3559 Belgium Lane
San Antonio, TX 78219
Phone: (210) 224-6220; Fax: (210) 224-6212

PROJECT #: 70-51

<p>PROPOSAL FOR:</p> <p>Webb County Purchasing Dept 1110 Washington St. Ste. 101 Attn: Accts Payable Laredo ,TX 78040</p>	<p>INSTALL AT:</p> <p>Webb County Purchasing Dept 1110 Victoria St., Ste. 304 Lisa Rogerio Laredo ,TX 78040</p>
--	--

SALESPERSON:
Becky Dorsey - Furniture

CUSTOMER P/O:

QUOTE VALID THROUGH:
03/28/14

#	QTY	PRODUCT	DESCRIPTION	SELL	EXTENDED
			US Communities Contract #4400003404		
			Please make PO out to Broussard Group 3559 Belgium Ln San Antonio, TX 78219		
1	2	D1R4824G	Knoll, Inc.- US Communities Worksurface, Rectangular, 48Wx24D, with grommet (CORE) Core Laminates 119 LAM: Pumice (CORE) Core Edgebands 119 EDGE: Pumice Line Number: 1 Tagging: 45564/Webb County/Add order	75.71	151.42
2	2	D1R6630G	Knoll, Inc.- US Communities Worksurface, Rectangular, 66Wx30D, with grommet (CORE) Core Laminates 119 LAM: Pumice (CORE) Core Edgebands 119 EDGE: Pumice Line Number: 2 Tagging: 45564/Webb County/Add order	120.30	240.60

**BROUSSARD GROUP**

Office Furniture, Systems and Services

PROPOSAL: 45564

DATE: 03/31/14

PROJECT #: 70-51

3559 Belgium Lane
 San Antonio, TX 78219
 Phone: (210) 224-6220; Fax: (210) 224-6212

PROPOSAL FOR:

Webb County Purchasing Dept
 1110 Washington St. Ste. 101
 Attn: Accts Payable
 Laredo ,TX 78040

INSTALL AT:

Webb County Purchasing Dept
 1110 Victoria St., Ste. 304
 Lisa Rogerio
 Laredo ,TX 78040

SALESPERSON:

Becky Dorsey - Furniture

CUSTOMER P/O:**QUOTE VALID THROUGH:**

03/28/14

<u>#</u>	<u>QTY</u>	<u>PRODUCT</u>	<u>DESCRIPTION</u>	<u>SELL</u>	<u>EXTENDED</u>
3	2	DB1C18L	Knoll, Inc.- US Communities Cantilever Bracket, Left, 18"D, Single Pack	13.48	26.96
		611T	PAINT: Beige Mist Metallic (Textured) Line Number: 3 Tagging: 45564/Webb County/Add order		
4	1	DB1C24L	Knoll, Inc.- US Communities Cantilever Bracket, Left, 24"D, Single Pack	17.64	17.64
		611T	PAINT: Beige Mist Metallic (Textured) Line Number: 4 Tagging: 45564/Webb County/Add order		
5	1	DB1C24R	Knoll, Inc.- US Communities Cantilever Bracket, Right, 24"D, Single Pack	17.64	17.64
		611T	PAINT: Beige Mist Metallic (Textured) Line Number: 5 Tagging: 45564/Webb County/Add order		
6	2	DB1F24SP	Knoll, Inc.- US Communities Flat Bracket 24" - Single Pack	6.86	13.72
			Line Number: 6 Tagging: 45564/Webb County/Add order		



BROUSSARD GROUP
Office Furniture, Systems and Services

PROPOSAL: 45564
DATE: 03/31/14
PROJECT #: 70-51

3559 Belgium Lane
San Antonio, TX 78219
Phone: (210) 224-6220; Fax: (210) 224-6212

<p>PROPOSAL FOR:</p> <p>Webb County Purchasing Dept 1110 Washington St. Ste. 101 Attn: Accts Payable Laredo ,TX 78040</p>	<p>INSTALL AT:</p> <p>Webb County Purchasing Dept 1110 Victoria St., Ste. 304 Lisa Rogerio Laredo ,TX 78040</p>
--	--

SALESPERSON: Becky Dorsey - Furniture **CUSTOMER P/O:** **QUOTE VALID THROUGH:** 03/28/14

#	QTY	PRODUCT	DESCRIPTION	SELL	EXTENDED
7	1	DB1PWSL	Knoll, Inc.- US Communities Panel-to-Worksurface Bracket, Left 611T PAINT: Beige Mist Metallic (Textured) Line Number: 7 Tagging: 45564/Webb County/Add order	2.45	2.45
8	4	DB1PWSP	Knoll, Inc.- US Communities Panel-to-Worksurface Bracket, Pair 611T PAINT: Beige Mist Metallic (Textured) Line Number: 8 Tagging: 45564/Webb County/Add order	5.15	20.60
9	1	DB1PWSR	Knoll, Inc.- US Communities Panel-to-Worksurface Bracket, Right 611T PAINT: Beige Mist Metallic (Textured) Line Number: 9 Tagging: 45564/Webb County/Add order	2.45	2.45
10	2	DE1DR1SP	Knoll, Inc.- US Communities Duplex Circuit 1 - Single Pack Line Number: 10 Tagging: 45564/Webb County/Add order	9.80	19.60



B ROUSSARD GROUP
Office Furniture, Systems and Services

PROPOSAL: 45564
DATE: 03/31/14
PROJECT #: 70-51

3559 Belgium Lane
San Antonio, TX 78219
Phone: (210) 224-6220; Fax: (210) 224-6212

<p>PROPOSAL FOR:</p> <p>Webb County Purchasing Dept 1110 Washington St. Ste. 101 Attn: Accts Payable Laredo ,TX 78040</p>	<p>INSTALL AT:</p> <p>Webb County Purchasing Dept 1110 Victoria St., Ste. 304 Lisa Rogerio Laredo ,TX 78040</p>
--	--

SALESPERSON:
Becky Dorsey - Furniture

CUSTOMER P/O:

QUOTE VALID THROUGH:
03/28/14

#	QTY	PRODUCT	DESCRIPTION	SELL	EXTENDED
11	2	DE1DR2SP	Knoll, Inc.- US Communities Duplex Circuit 2 - Single Pack Line Number: 11 Tagging: 45564/Webb County/Add order	9.80	19.60
12	2	DE1DR4SP	Knoll, Inc.- US Communities Duplex Circuit 4 - Single Pack Line Number: 12 Tagging: 45564/Webb County/Add order	9.80	19.60
13	2	DE1EPCNP	Knoll, Inc.- US Communities Panel Power Connector, 3+1, 12" no post Line Number: 13 Tagging: 45564/Webb County/Add order	18.38	36.76
14	1	DE1EPCWP	Knoll, Inc.- US Communities Panel Power Connector, 3+1, 15" w/post Line Number: 14 Tagging: 45564/Webb County/Add order	18.87	18.87
15	1	DE1EPJ30WP	Knoll, Inc.- US Communities Panel Power Jumper, 3+1, 30" Panel, (with post) Line Number: 15 Tagging: 45564/Webb County/Add order	25.48	25.48



BROUSSARD GROUP
Office Furniture, Systems and Services

PROPOSAL: 45564
DATE: 03/31/14

3559 Belgium Lane
San Antonio, TX 78219
Phone: (210) 224-6220; Fax: (210) 224-6212

PROJECT #: 70-51

<p>PROPOSAL FOR:</p> <p>Webb County Purchasing Dept 1110 Washington St. Ste. 101 Attn: Accts Payable Laredo ,TX 78040</p>	<p>INSTALL AT:</p> <p>Webb County Purchasing Dept 1110 Victoria St., Ste. 304 Lisa Rogerio Laredo ,TX 78040</p>
--	--

SALESPERSON:

Becky Dorsey - Furniture

CUSTOMER P/O:

QUOTE VALID THROUGH:

03/28/14

#	QTY	PRODUCT	DESCRIPTION	SELL	EXTENDED
16	2	DE1EPM30	Knoll, Inc.- US Communities Panel Power Module, 3+1, 30" Panel Line Number: 16 Tagging: 45564/Webb County/Add order	30.14	60.28
17	2	DE1EPM36	Knoll, Inc.- US Communities Panel Power Module, 3+1, 36" Panel Line Number: 17 Tagging: 45564/Webb County/Add order	31.36	62.72
18	1	DE1EPM48	Knoll, Inc.- US Communities Panel Power Module, 3+1, 48" Panel Line Number: 18 Tagging: 45564/Webb County/Add order	35.53	35.53
19	1	DE1ERBI56	Knoll, Inc.- US Communities Base Power Infeed, 3+1, (reversible) Line Number: 19 Tagging: 45564/Webb County/Add order	61.74	61.74
20	3	DP5TCTSP	Knoll, Inc.- US Communities Panel-to-Panel Top Cap Transition, used with metal flat - Single P CONTINUED...	0.74	2.22



BROUSSARD GROUP
Office Furniture, Systems and Services

PROPOSAL: 45564
DATE: 03/31/14

3559 Belgium Lane
San Antonio, TX 78219
Phone: (210) 224-6220; Fax: (210) 224-6212

PROJECT #: 70-51

<p>PROPOSAL FOR:</p> <p>Webb County Purchasing Dept 1110 Washington St. Ste. 101 Attn: Accts Payable Laredo ,TX 78040</p>	<p>INSTALL AT:</p> <p>Webb County Purchasing Dept 1110 Victoria St., Ste. 304 Lisa Rogerio Laredo ,TX 78040</p>
--	--

SALESPERSON:
Becky Dorsey - Furniture

CUSTOMER P/O:

QUOTE VALID THROUGH:
03/28/14

<u>#</u>	<u>QTY</u>	<u>PRODUCT</u>	<u>DESCRIPTION</u>	<u>SELL</u>	<u>EXTENDED</u>
		611T	PAINT: Beige Mist Metallic Line Number: 20 Tagging: 45564/Webb County/Add order		
21	2	DP6PE64	Knoll, Inc.- US Communities Panel End Assembly, 64H, thin profile	33.81	67.62
		611T	PAINT: Beige Mist Metallic Line Number: 21 Tagging: 45564/Webb County/Add order		
22	2	DP6PEWH	Knoll, Inc.- US Communities Panel End Assembly, Worksurface Height, thin profile	24.26	48.52
		611T	PAINT: Beige Mist Metallic Line Number: 22 Tagging: 45564/Webb County/Add order		
23	1	DP7HLCWH	Knoll, Inc.- US Communities Worksurface Height Panel Change of Height Kit Line Number: 23 Tagging: 45564/Webb County/Add order	7.84	7.84



BROUSSARD GROUP
Office Furniture, Systems and Services

PROPOSAL: 45564
DATE: 03/31/14
PROJECT #: 70-51

3559 Belgium Lane
San Antonio, TX 78219
Phone: (210) 224-6220; Fax: (210) 224-6212

<p>PROPOSAL FOR:</p> <p>Webb County Purchasing Dept 1110 Washington St. Ste. 101 Attn: Accts Payable Laredo ,TX 78040</p>	<p>INSTALL AT:</p> <p>Webb County Purchasing Dept 1110 Victoria St., Ste. 304 Lisa Rogerio Laredo ,TX 78040</p>
--	--

SALESPERSON: Becky Dorsey - Furniture CUSTOMER P/O: QUOTE VALID THROUGH: 03/28/14

#	QTY	PRODUCT	DESCRIPTION	SELL	EXTENDED
24	1	DP7PA6435	Knoll, Inc.- US Communities Three Way Post Assembly "T", 64H, Horizon, metal flat 611T PAINT: Beige Mist Metallic Line Number: 24 Tagging: 45564/Webb County/Add order	51.70	51.70
25	1	DP7PC64 (CORE) 611T	Knoll, Inc.- US Communities Post Cover, Straight, 64H, Horizon Core Paints PAINT: Beige Mist Metallic (Textured) Line Number: 25 Tagging: 45564/Webb County/Add order	14.46	14.46
26	1	DP7PCWH64LH (CORE) 611T	Knoll, Inc.- US Communities Worksurface Height Post Cover, Hi-Lo Left Hand, 28-1/2H + 64H, Hor Core Paints PAINT: Beige Mist Metallic (Textured) Line Number: 26 Tagging: 45564/Webb County/Add order	29.89	29.89
27	1	DP7PCWH64RH	Knoll, Inc.- US Communities Worksurface Height Post Cover, Hi-Lo Right Hand, 28-1/2H + 64H, Ho CONTINUED...	29.89	29.89



B ROUSSARD GROUP
Office Furniture, Systems and Services

PROPOSAL: 45564
DATE: 03/31/14

3559 Belgium Lane
San Antonio, TX 78219
Phone: (210) 224-6220; Fax: (210) 224-6212

PROJECT #: 70-51

<p>PROPOSAL FOR:</p> <p>Webb County Purchasing Dept 1110 Washington St. Ste. 101 Attn: Accts Payable Laredo ,TX 78040</p>	<p>INSTALL AT:</p> <p>Webb County Purchasing Dept 1110 Victoria St., Ste. 304 Lisa Rogerio Laredo ,TX 78040</p>
--	--

SALESPERSON:

Becky Dorsey - Furniture

CUSTOMER P/O:

QUOTE VALID THROUGH:

03/28/14

#	QTY	PRODUCT	DESCRIPTION	SELL	EXTENDED
		(CORE) 611T	Core Paints PAINT: Beige Mist Metallic (Textured) Line Number: 27 Tagging: 45564/Webb County/Add order		
28	1	DP7P064	Knoll, Inc.- US Communities Universal Post Component, 64H, Horizon Line Number: 28 Tagging: 45564/Webb County/Add order	27.93	27.93
29	1	DP7PT15 611T	Knoll, Inc.- US Communities Post Top Cap Component One Way, Horizon, metal flat PAINT: Beige Mist Metallic Line Number: 29 Tagging: 45564/Webb County/Add order	2.21	2.21
30	2	DP7VMMRR502 4 5 611T K (CORE) 611T	Knoll, Inc.- US Communities Preconfigured Panel, Full View, Monolithic/Monolithic, Fabric to R TOPCAP: Flat Metal TOPCAP: Beige Mist Metallic (Textured) RACE: with Knockouts Core Paints RACE: Beige Mist Metallic (Textured) CONTINUED...	146.51	293.02



BROUSSARD GROUP
Office Furniture, Systems and Services

PROPOSAL: 45564
DATE: 03/31/14
PROJECT #: 70-51

3559 Belgium Lane
San Antonio, TX 78219
Phone: (210) 224-6220; Fax: (210) 224-6212

<p>PROPOSAL FOR:</p> <p>Webb County Purchasing Dept 1110 Washington St. Ste. 101 Attn: Accts Payable Laredo ,TX 78040</p>	<p>INSTALL AT:</p> <p>Webb County Purchasing Dept 1110 Victoria St., Ste. 304 Lisa Rogerio Laredo ,TX 78040</p>
--	--

SALESPERSON:
Becky Dorsey - Furniture

CUSTOMER P/O:

QUOTE VALID THROUGH:
03/28/14

#	QTY	PRODUCT	DESCRIPTION	SELL	EXTENDED
		(K872) K87212	FABRIC: Dristi (Gr45) COL: Carob Line Number: 30 Tagging: 45564/Webb County/Add order		
31	1	DP7VMMRR503 0	Knoll, Inc.- US Communities Preconfigured Panel, Full View, Monolithic/Monolithic, Fabric to R	161.70	161.70
		5 611T K (CORE) 611T (K872) K87212	TOPCAP: Flat Metal TOPCAP: Beige Mist Metallic (Textured) RACE: with Knockouts Core Paints RACE: Beige Mist Metallic (Textured) FABRIC: Dristi (Gr45) COL: Carob Line Number: 31 Tagging: 45564/Webb County/Add order		
32	1	DP7VMMRR504 8	Knoll, Inc.- US Communities Preconfigured Panel, Full View, Monolithic/Monolithic, Fabric to R	208.99	208.99
		5 611T K (CORE)	TOPCAP: Flat Metal TOPCAP: Beige Mist Metallic (Textured) RACE: with Knockouts Core Paints		
			CONTINUED...		



BROUSSARD GROUP
Office Furniture, Systems and Services

PROPOSAL: 45564
DATE: 03/31/14

3559 Belgium Lane
San Antonio, TX 78219
Phone: (210) 224-6220; Fax: (210) 224-6212

PROJECT #: 70-51

<p>PROPOSAL FOR:</p> <p>Webb County Purchasing Dept 1110 Washington St. Ste. 101 Attn: Accts Payable Laredo ,TX 78040</p>	<p>INSTALL AT:</p> <p>Webb County Purchasing Dept 1110 Victoria St., Ste. 304 Lisa Rogerio Laredo ,TX 78040</p>
--	--

SALESPERSON: Becky Dorsey - Furniture **CUSTOMER P/O:** **QUOTE VALID THROUGH:** 03/28/14

#	QTY	PRODUCT	DESCRIPTION	SELL	EXTENDED
		611T (K872) K87212	RACE: Beige Mist Metallic (Textured) FABRIC: Dristi (Gr45) COL: Carob Line Number: 32 Tagging: 45564/Webb County/Add order		
33	2	DP7VMMRRWH3 0	Knoll, Inc.- US Communities Preconfigured Panel, Full View, Monolithic/Monolithic, Fabric to R	142.59	285.18
		5 611T K (CORE) 611T (K872) K87212	TOPCAP: Flat Metal TOPCAP: Beige Mist Metallic (Textured) RACE: with Knockouts Core Paints RACE: Beige Mist Metallic (Textured) FABRIC: Dristi (Gr45) COL: Carob Line Number: 33 Tagging: 45564/Webb County/Add order		
34	2	DP7VMMRRWH3 6	Knoll, Inc.- US Communities Preconfigured Panel, Full View, Monolithic/Monolithic, Fabric to R	160.48	320.96
		5 611T K	TOPCAP: Flat Metal TOPCAP: Beige Mist Metallic (Textured) RACE: with Knockouts CONTINUED...		

**BROUSSARD GROUP**

Office Furniture, Systems and Services

PROPOSAL: 45564

DATE: 03/31/14

PROJECT #: 70-51

3559 Belgium Lane
 San Antonio, TX 78219
 Phone: (210) 224-6220; Fax: (210) 224-6212

PROPOSAL FOR: Webb County Purchasing Dept 1110 Washington St. Ste. 101 Attn: Accts Payable Laredo ,TX 78040	INSTALL AT: Webb County Purchasing Dept 1110 Victoria St., Ste. 304 Lisa Rogerio Laredo ,TX 78040
--	--

SALESPERSON:

Becky Dorsey - Furniture

CUSTOMER P/O:**QUOTE VALID THROUGH:**

03/28/14

<u>#</u>	<u>QTY</u>	<u>PRODUCT</u>	<u>DESCRIPTION</u>	<u>SELL</u>	<u>EXTENDED</u>
		(CORE)	Core Paints		
		611T	RACE: Beige Mist Metallic (Textured)		
		(K872)	FABRIC: Dristi (Gr45)		
		K87212	COL: Carob		
			Line Number: 34		
			Tagging: 45564/Webb County/Add order		
35	2	DP7SSGR1424	Knoll, Inc.- US Communities Stacking Screen, Rectangular Frame with Clear Tempered Glass, 14Hx	145.78	291.56
		611T	FRAME: Beige Mist Metallic (Textured)		
			Line Number: 35		
			Tagging: 45564/Webb County/Add order		
36	1	DP7SSGR1430	Knoll, Inc.- US Communities Stacking Screen, Rectangular Frame with Clear Tempered Glass, 14Hx	153.86	153.86
		611T	FRAME: Beige Mist Metallic (Textured)		
			Line Number: 36		
			Tagging: 45564/Webb County/Add order		
37	1	DP7SSGR1448	Knoll, Inc.- US Communities Stacking Screen, Rectangular Frame with Clear Tempered Glass, 14Hx	176.40	176.40
			CONTINUED...		



BROUSSARD GROUP
Office Furniture, Systems and Services

PROPOSAL: 45564

DATE: 03/31/14

PROJECT #: 70-51

3559 Belgium Lane
San Antonio, TX 78219
Phone: (210) 224-6220; Fax: (210) 224-6212

<p>PROPOSAL FOR:</p> <p>Webb County Purchasing Dept 1110 Washington St. Ste. 101 Attn: Accts Payable Laredo ,TX 78040</p>	<p>INSTALL AT:</p> <p>Webb County Purchasing Dept 1110 Victoria St., Ste. 304 Lisa Rogerio Laredo ,TX 78040</p>
--	--

SALESPERSON:
Becky Dorsey - Furniture

CUSTOMER P/O:

QUOTE VALID THROUGH:
03/28/14

<u>#</u>	<u>QTY</u>	<u>PRODUCT</u>	<u>DESCRIPTION</u>	<u>SELL</u>	<u>EXTENDED</u>
		611T	FRAME: Beige Mist Metallic (Textured) Line Number: 37 Tagging: 45564/Webb County/Add order		
38	2	DS2PFL18A	Knoll, Inc.- US Communities Floorstanding Pedestal, Series 2 steel front, Box/Box/File, 17-1/4 ~ Standard box drawer slides (CORE S) Smooth Core Paints 611 PAINT: Beige Mist Metallic (KEYALIKE) LOCK: Keyed Alike (LOCK) Spec lock core & key separate Line Number: 38 Tagging: 45564/Webb County/Add order	175.91	351.82
39	2	DS2PFL24B	Knoll, Inc.- US Communities Floorstanding Pedestal, Series 2 steel front, File/File, 23-1/4D, (CORE S) Smooth Core Paints 611 PAINT: Beige Mist Metallic (KEYALIKE) LOCK: Keyed Alike (LOCK) Spec lock core & key separate Line Number: 39 Tagging: 45564/Webb County/Add order	142.84	285.68



BROUSSARD GROUP
Office Furniture, Systems and Services

PROPOSAL: 45564
DATE: 03/31/14

3559 Belgium Lane
San Antonio, TX 78219
Phone: (210) 224-6220; Fax: (210) 224-6212

PROJECT #: 70-51

<p>PROPOSAL FOR:</p> <p>Webb County Purchasing Dept 1110 Washington St. Ste. 101 Attn: Accts Payable Laredo ,TX 78040</p>	<p>INSTALL AT:</p> <p>Webb County Purchasing Dept 1110 Victoria St., Ste. 304 Lisa Rogerio Laredo ,TX 78040</p>
--	--

SALESPERSON: Becky Dorsey - Furniture CUSTOMER P/O: QUOTE VALID THROUGH: 03/28/14

#	QTY	PRODUCT	DESCRIPTION	SELL	EXTENDED
40	2	DS2PPTN	Knoll, Inc.- US Communities Pencil Tray, black Line Number: 40 Tagging: 45564/Webb County/Add order	9.80	19.60
41	2	DS2XPB (CORE S) 611	Knoll, Inc.- US Communities Floorstanding Pedestal Case Back Smooth Core Paints PAINT: Beige Mist Metallic Line Number: 41 Tagging: 45564/Webb County/Add order	25.24	50.48
42	2	KSPEC2	Knoll, Inc.- US Communities Set of 2 cores/keys (black) Line Number: 42 Tagging: 45564/Webb County/Add order	0.00	0.00
43	2	2ORCH-S-LGT CL	Knoll, Inc.- US Communities Side Legal Tray Double, 15-1/2Wx9-1/2Dx7-3/4H FINISH: Clear Line Number: 43 Tagging: 45564/Webb County/Add order	45.14	90.28
44	2	COPE02	Knoll, Inc.- US Communities Copeland Light with Compact Arm CONTINUED...	72.15	144.30



BROUSSARD GROUP
Office Furniture, Systems and Services

PROPOSAL: 45564
DATE: 03/31/14
PROJECT #: 70-51

3559 Belgium Lane
San Antonio, TX 78219
Phone: (210) 224-6220; Fax: (210) 224-6212

<p>PROPOSAL FOR:</p> <p>Webb County Purchasing Dept 1110 Washington St. Ste. 101 Attn: Accts Payable Laredo ,TX 78040</p>	<p>INSTALL AT:</p> <p>Webb County Purchasing Dept 1110 Victoria St., Ste. 304 Lisa Rogerio Laredo ,TX 78040</p>
--	--

SALESPERSON:
Becky Dorsey - Furniture

CUSTOMER P/O:

QUOTE VALID THROUGH:
03/28/14

#	QTY	PRODUCT	DESCRIPTION	SELL	EXTENDED
		SV	FINISH: Silver Line Number: 44 Tagging: 45564/Webb County/Add order		
45	2	COPEPMD	Knoll, Inc.- US Communities Dividends Panel Mount for Copeland	35.15	70.30
		SV	FINISH: Silver Line Number: 45 Tagging: 45564/Webb County/Add order		
46	2	OR-SL-06-48 (CORE) 611 ORBKT PM DV	Knoll, Inc.- US Communities Slatboard, 48Wx6-1/2H Core Paints SLAT: Beige Mist Metallic OPTION: Orchestra Bracket BRK: Panel-Mounted BRK: "DV" Dividends Line Number: 46 Tagging: 45564/Webb County/Add order	92.50	185.00
47	2	ORCH-FS CL	Knoll, Inc.- US Communities File Sorter, 10-1/4Wx5-1/2Dx5-1/2H FINISH: Clear Line Number: 47 Tagging: 45564/Webb County/Add order	18.13	36.26



B ROUSSARD GROUP
Office Furniture, Systems and Services

PROPOSAL: 45564
DATE: 03/31/14

3559 Belgium Lane
San Antonio, TX 78219
Phone: (210) 224-6220; Fax: (210) 224-6212

PROJECT #: 70-51

<p>PROPOSAL FOR:</p> <p>Webb County Purchasing Dept 1110 Washington St. Ste. 101 Attn: Accts Payable Laredo ,TX 78040</p>	<p>INSTALL AT:</p> <p>Webb County Purchasing Dept 1110 Victoria St., Ste. 304 Lisa Rogerio Laredo ,TX 78040</p>
--	--

SALESPERSON:
Becky Dorsey - Furniture

CUSTOMER P/O:

QUOTE VALID THROUGH:
03/28/14

#	QTY	PRODUCT	DESCRIPTION	SELL	EXTENDED
48	2	ORCH-PC CL	Knoll, Inc.- US Communities Pencil Cup, 5Wx3Dx4H FINISH: Clear Line Number: 48 Tagging: 45564/Webb County/Add order	10.73	21.46
49	2	SAPMASCLMPK 613 R	Knoll, Inc.- US Communities Sapper Single Arm Kit, table clamp mount, 16" mast, movement joint PAINT: Silver KNOB: Red Line Number: 49 Tagging: 45564/Webb County/Add order	148.37	296.74
50	2	DESIGN	Broussard Group Office Furniture DESIGN Line Number: 50 Tagging: 45564/Webb County/Add order	87.55	175.10
51	1	Service	Broussard Group Office Furniture Receive, deliver and install (2) Knoll workstations for the 49th District Court Administrative Offices as per plan and 3D drawing. CONTINUED...	1,070.00	1,070.00



BROUSSARD GROUP
Office Furniture, Systems and Services

PROPOSAL: 45564
DATE: 03/31/14

3559 Belgium Lane
San Antonio, TX 78219
Phone: (210) 224-6220; Fax: (210) 224-6212

PROJECT #: 70-51

<p>PROPOSAL FOR:</p> <p>Webb County Purchasing Dept 1110 Washington St. Ste. 101 Attn: Accts Payable Laredo ,TX 78040</p>	<p>INSTALL AT:</p> <p>Webb County Purchasing Dept 1110 Victoria St., Ste. 304 Lisa Rogerio Laredo ,TX 78040</p>
--	--

SALESPERSON:
Becky Dorsey - Furniture

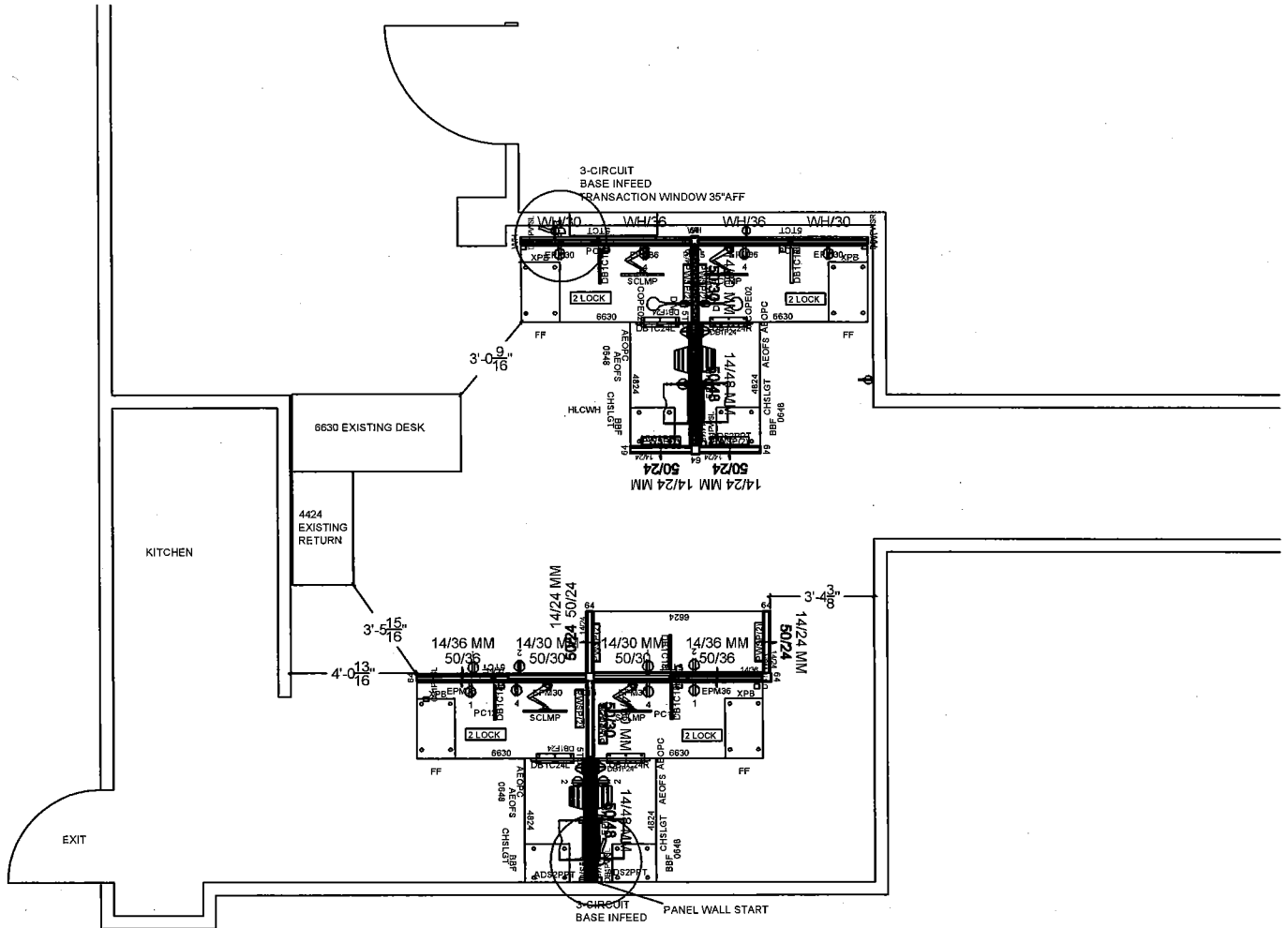
CUSTOMER P/O:

QUOTE VALID THROUGH:
03/28/14

<u>#</u>	<u>QTY</u>	<u>PRODUCT</u>	<u>DESCRIPTION</u>	<u>SELL</u>	<u>EXTENDED</u>
			Furniture to match existing product installed recently. Glass frames are to differ slightly from previous frame style. Line Number: 51 Tagging: 45564/Webb County/Add order		
DEPOSIT REQUIRED:			0.00		
				SUBTOTAL.....:	4,579.53
				DESIGN/OTHER:	175.10
				DEL/INSTALL.:	1,070.00
					=====
ACCEPTED BY: _____				TOTAL.....:	5,824.63
DATE ACCEPTED: _____					

FURNITURE NOTES:

- DIVIDENDS 50H MONO/MONO FULL VIEW PANEL + 14H CLEAR GLASS STACK-ONS.
- DIVIDENDS WORKSURFACE HEIGHT MONO/MONO FULL VIEW PANELS AGAINST WALL.
- HORIZON FLAT METAL/THIN TRIM.
- PAPER MANAGEMENT + LOADBAR.
- SAPPER MONITOR ARM.
- COPELAND PANEL MOUNT LIGHT.
- SERIES II FREESTANDING BBF PED, PENCIL TRAY, LOCK (18"D).
- SERIES II FREESTANDING FF PED, BACK, LOCK (24"D).
- BASE INFED, 3 DUPLEX PER STATION.
- NO SEATING.



Drawing Name:
**WEBB COUNTY
49TH DISTRICT COURT
NEW LAYOUT**

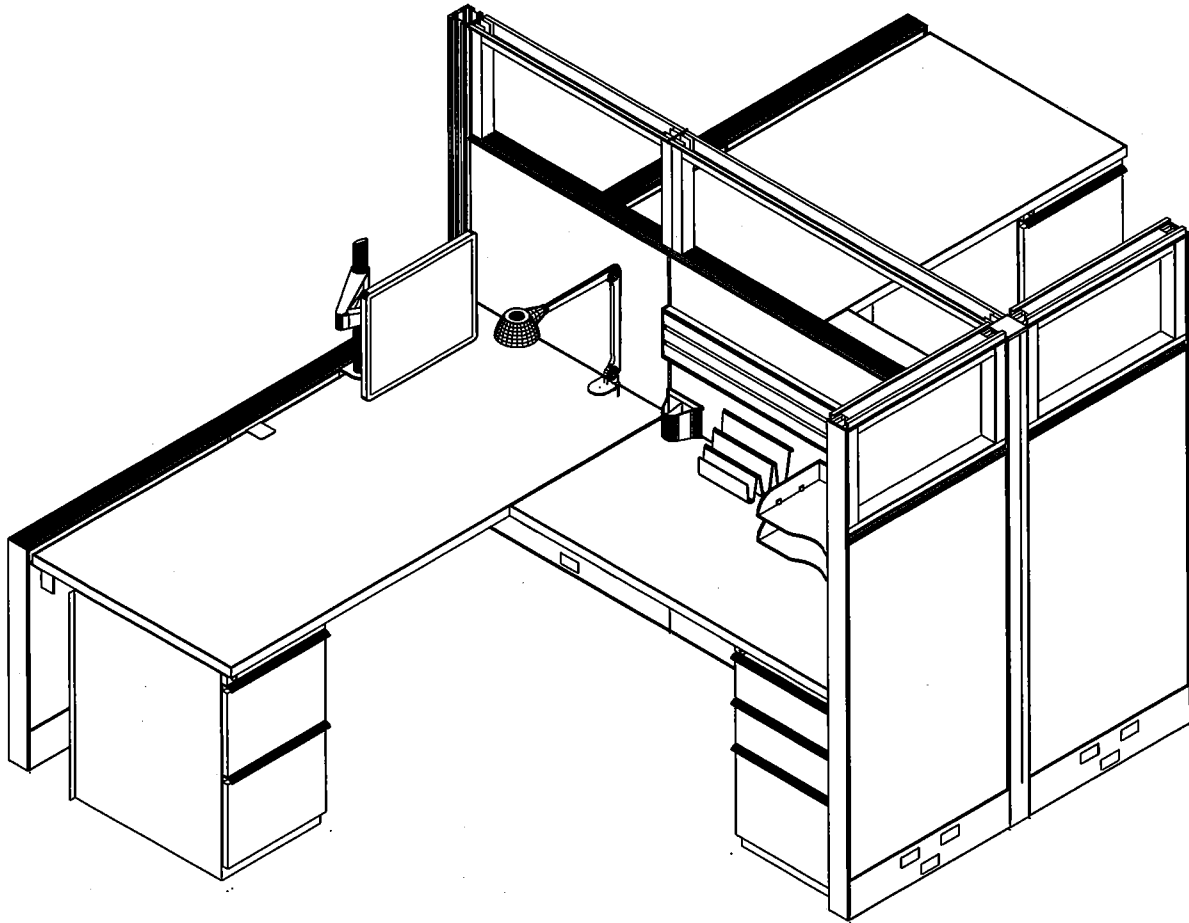
Revisions:
08.19.13
03.24.14

Drawn By:
BG
Date:
08.13.13
Scale:
NTS
Approved By:
Date:
Job No.
C44800813

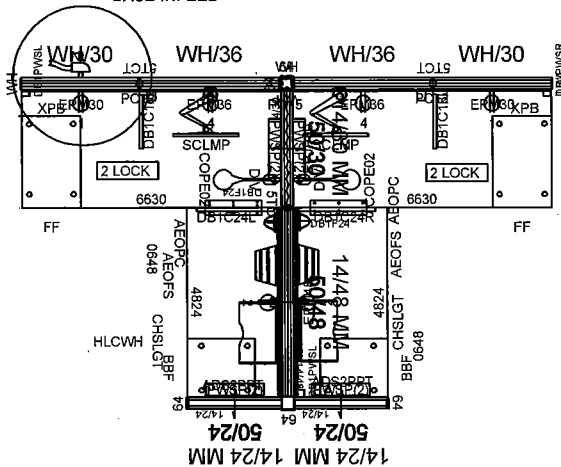
Notes:
** THIS DRAWING IS THE PROPERTY OF BROUSSARD GROUP. IT IS NOT TO BE COPIED, REPRODUCED, SHOWN, OR GIVEN TO ANY OTHER BUSINESS CONSIDERED AS COMPETITION. THESE DRAWINGS ARE PROVIDED AS A SERVICE TO THE CLIENT ONLY AND ARE NOT TO BE USED FOR CONSTRUCTION PURPOSES.
** ANY REVISIONS MADE AFTER SIGN OFF MAY INCUR DESIGN AND/OR LABOR CHARGES.



BROUSSARD GROUP
816 CAMARON
SUITE 1.09
SAN ANTONIO, TX 78212
210.224.6220 phone
210.224.6212 fax



3-CIRCUIT
BASE INFEED



Drawing Name:

**WEBB COUNTY
49TH DISTRICT COURT
3D**

Revisions:	Drawn By: BG
08.19.13 03.24.14	Date: 08.13.13
	Scale: NTS
	Approved By:
	Date:
	Job No. C44800813

Notes:

** THIS DRAWING IS THE PROPERTY OF BROUSSARD GROUP. IT IS NOT TO BE COPIED, REPRODUCED, SHOWN, OR GIVEN TO ANY OTHER BUSINESS CONSIDERED AS COMPETITION. THESE DRAWINGS ARE PROVIDED AS A SERVICE TO THE CLIENT ONLY AND ARE NOT TO BE USED FOR CONSTRUCTION PURPOSES.

** ANY REVISIONS MADE AFTER SIGN OFF MAY INCUR DESIGN AND/OR LABOR CHARGES.



BROUSSARD GROUP
816 CAMARON
SUITE 1.09
SAN ANTONIO, TX 78212
210.224.6220 phone
210.224.6212 fax