

LOT 1
BLOCK 2
(3.13 ACS)

LOT 2
BLOCK 1
(3.13 ACS)

TRACT 6
LAS BLANCAS SUBDIVISION
(VOL. 10, PG. 91, P.R.W.C.T.)

LOT 2
BLOCK 2
(2.85 ACS)

LOT 3
BLOCK 2
(3.44 ACS)
LAS BLANCAS SUBDIVISION, UNIT 2
(VOL. 25, PG. 104, M.R.W.C.T.)

LOT 4
BLOCK 2
(3.44 ACS)

LOT 5
BLOCK 2
(3.63 ACS)

P.O.C.

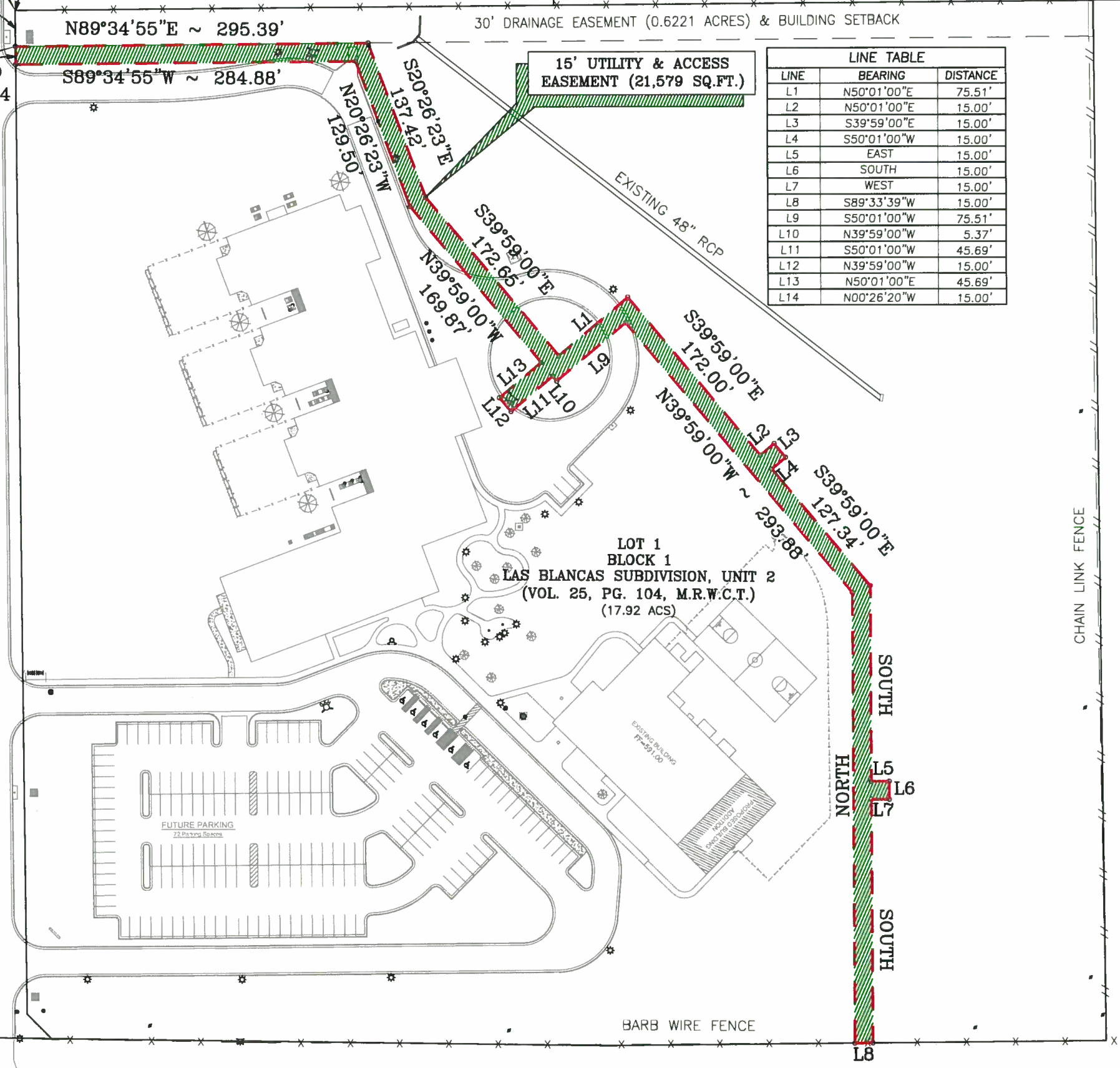
P.O.B.

CAMINO NUEVO ROAD
(70' R.O.W. - 50' B-B)

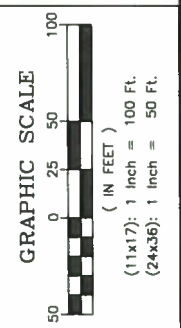
30' GAS EASEMENT (VOL 10, PG. 91, P.R.W.C.T.) BURIED GAS LINE - APPROX. 48" COVER
30' DRAINAGE EASEMENT (0.6221 ACRES) & BUILDING SETBACK

15' UTILITY & ACCESS
EASEMENT (21,579 SQ.FT.)

LINE	BEARING	DISTANCE
L1	N50°01'00"E	75.51'
L2	N50°01'00"E	15.00'
L3	S39°59'00"E	15.00'
L4	S50°01'00"W	15.00'
L5	EAST	15.00'
L6	SOUTH	15.00'
L7	WEST	15.00'
L8	S89°33'39"W	15.00'
L9	S50°01'00"W	75.51'
L10	N39°59'00"W	5.37'
L11	S50°01'00"W	45.69'
L12	N39°59'00"W	15.00'
L13	N50°01'00"E	45.69'
L14	N00°26'20"W	15.00'



HOWLAND
ENGINEERING AND SURVEYING CO.
TBPPE Firm Registration No. F-4097 / TBPPLS Firm Registration No. 100464-00
7615 N. Bartlett Avenue / P.O. Box 451126 (78045) Laredo, TX 78041
P. 956.722.4411 F. 956.722.5414
www.howlandcompanies.com



TRACT 7
LAS BLANCAS SUBDIVISION
(VOL. 10, PG. 91, P.R.W.C.T.)

JUVENILE JUSTICE ALTERNATIVE
EDUCATION PROGRAM

15' UTILITY & ACCESS EASEMENT



Ricardo M. Villarreal
RICARDO M. VILLARREAL, R.P.L.S. NO. 6242

5/29/13
DATE

DRAWN BY: J.C.R.
CHECKED BY: R.M.V.
DRAWN DATE: 05/21/2013
PLOTTED DATE:
JOB No.
FILE NAME:
STATUS:
AS-BUILT:
REVISED DATE:

SCALE: (24"x36") SHEET
HOR: 1"=50' VER.
SCALE: (11"x17") SHEET
HOR: 1"=100' VER.
SHEET TOTAL:
1 OF 1

STATE HWY 359