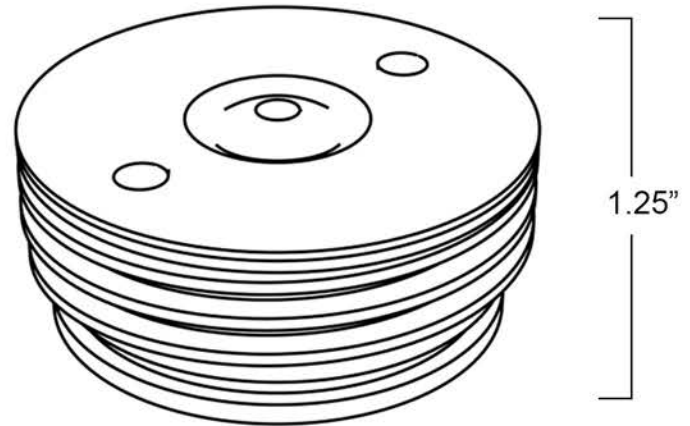
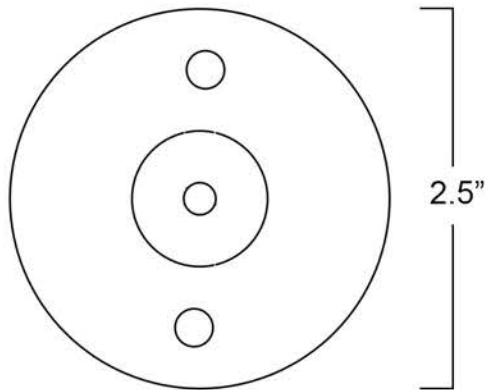




## COMMERCIAL NOZZLE

Model Number: **CN001**  
Nozzle: **Machined Brass / Delrin**  
Flow Rate: **1.5 - 6 GPM**





## COMMERCIAL NOZZLE

Water Effect: Multiple directional spray patterns.





## Commander Controller

### FEATURES

- Outdoor/Indoor cased housing
- **Built In** programmable sequences (4)
- 2 Strand low voltage (proximity switch)
- 8 Strand low voltage (solenoid valves)
- Adjustable run times (10, 20, 30 minutes)
- **Built in** proximity sensor relay

### ELECTRICAL SPECIFICATIONS

- Transformer input 120 VAC
- Transformer output 24 VAC 1A
- Sensor inputs: 2
- Solenoid station output: 24 VAC .56A



Model CCB-008  
Height 13"  
Width 14.5"  
Depth 5"

MANUFACTURER: SplashPadsUSA



[support@splashpadsusa.com](mailto:support@splashpadsusa.com)

SplashPadsUSA Reserves the right to change specifications without notice due to ongoing research and development. All plans, designs and renderings remain the property of and are licensed by SplashPadsUSA and cannot be used, reproduced or shared with third party entities without written permission from SplashPadsUSA.



CLEAN & CLEAR® PLUS

# CLEAN & CLEAR® PLUS CARTRIDGE FILTER



## CRYSTAL CLEAR WATER THE EASY WAY

The Clean & Clear Plus filter combines top-end filter performance with low maintenance. This dependable design uses special filter elements to strip tiny particles from your pool water...particles as small as 20 microns (an average grain of beach sand is 1,000 microns). Our four-cartridge design provides maximum filter surface area to capture more dirt and extend time between cleanings. And cleaning is a snap—open the top, remove the cartridges, hose them off and the Clean & Clear Plus filter is ready to go again.



We've maximized cartridge surface consistency to block and trap the maximum amount of solids, plus we use the most durable materials to extend cartridge life. The Clean & Clear Plus filter delivers commercial-grade performance that keeps pools clean and sparkling, day in and day out.

- Four-cartridge design traps more dirt and extends time between cleanings.
- Cartridges are easy to remove and rinse.
- Clamp ring allows easier access to cartridges and internal parts to speed service routines.
- 1½" drain is easy to access and located to ensure complete draining during winterization.
- Fiberglass-reinforced polypropylene tank is strong and corrosion resistant for extra long life.

## AN ECO SELECT® BRAND PRODUCT

The Eco Select brand identifies our "greenest" and most efficient equipment choices. Water flows very efficiently through the Clean & Clear Plus filter, often allowing the use of smaller pumps or lower pump speeds to minimize energy use. And when you rinse cartridges rather than backwash, you can significantly reduce water use, too.



# CLEAN & CLEAR<sup>®</sup> PLUS CARTRIDGE FILTER

Clamp ring for easy and quick access to cartridges

Single-piece fiberglass-reinforced polypropylene tank for strength and corrosion resistance

2" plumbing for maximum flow and faster water cleaning

Easy access 1/2" drain makes proper winterization fast and simple



## FOUR CARTRIDGES IN A COMPACT DESIGN

Clean & Clear Plus filters contain four polyester cartridges that hold enormous amounts of dirt, yet are easier to clean. The fiberglass-reinforced tank halves are secured with an innovative clamp ring—just loosen the ring and remove the top half for easy cartridge access and rinsing. Filter maintenance doesn't get any easier.

- Continuous internal air bleed helps prevent air build-up to keep the filter operating at peak performance.
- Single-piece base and body for strength, stability and years of dependable service.

Model Number	Filter Area Sq. Ft.	Vertical Clearance*	Filter Diameter	Flow Rate GPM <sup>2</sup>	Turnover Capacity-Res. (Gallons)		
				Residential	8 hrs.	10 hrs.	12 hrs.
CCP240	240	56"	21.5"	90	43,200	54,000	64,800
CCP320 <sup>1</sup>	320	62"	21.5"	120	57,600	72,000	86,400
CCP420 <sup>1</sup>	420	68"	21.5"	150	72,000	90,000	108,000
CCP520 <sup>1</sup>	520	74"	21.5"	150	72,000	90,000	108,000

<sup>1</sup>NSF Certified

<sup>2</sup>Residential rate .375 GPM per sq. ft. of filter area

AVAILABLE FROM:



1620 HAWKINS AVE, SANFORD, NC 27330 800.831.7133 WWW.PENTAIRPOOL.COM

All Pentair trademarks and logos are owned by Pentair or one of its global affiliates. Clean & Clear<sup>®</sup> and Eco Select<sup>®</sup> are registered trademarks of Pentair Water Pool and Spa, Inc. and/or its affiliated companies in the United States and/or other countries. Because we are continuously improving our products and services, Pentair reserves the right to change specifications without prior notice. Pentair is an equal opportunity employer.

pumps • filters • heaters • heat pumps • automation • lighting • cleaners • sanitizers • water features • maintenance products

7/16 Part # P1-131 ©2016 Pentair Water Pool and Spa, Inc. All rights reserved.

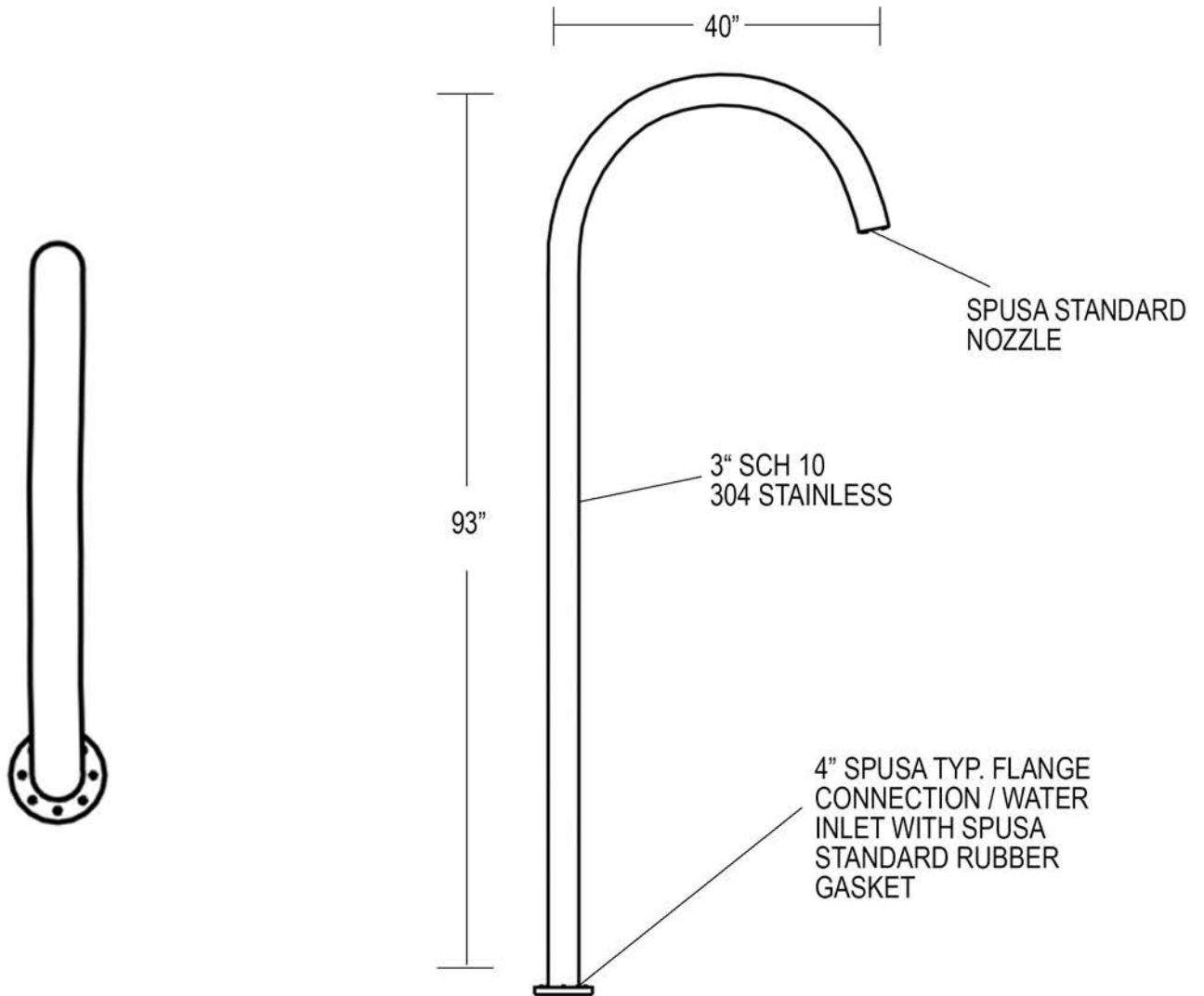






## CANE SPRAYER

Model Number: CS001  
Gaskets: 1/8" Gasket at connection  
Base: SB001 SPUSA Standard  
Nozzle: Machined brass / Delrin  
Flow Rate: Variable - 10 to 20 GPM





## CANE SPRAYER

Water Effect: Water sprays from the nozzle on the end of the cane, creating a shower effect.

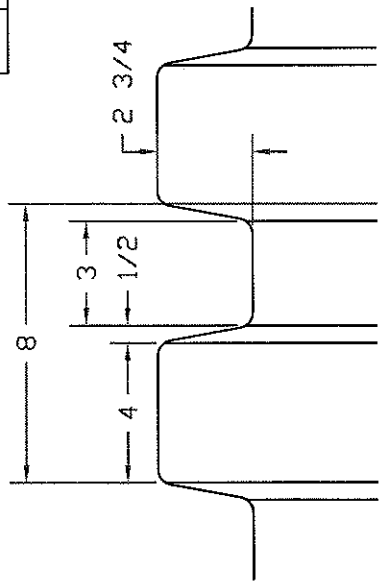
Coating: Single Stage Urethane Top Coat - UV Resistant

Color: Chosen Upon Purchase

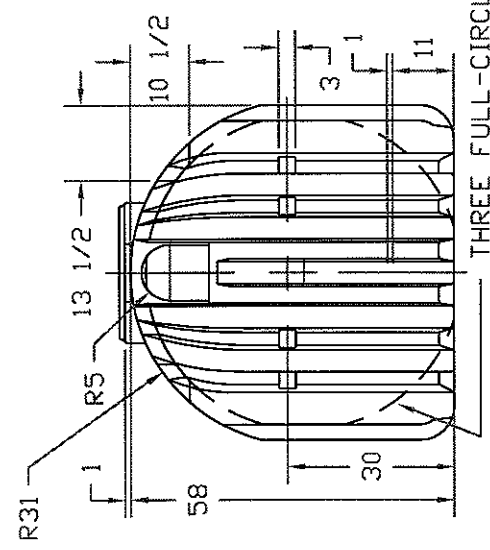
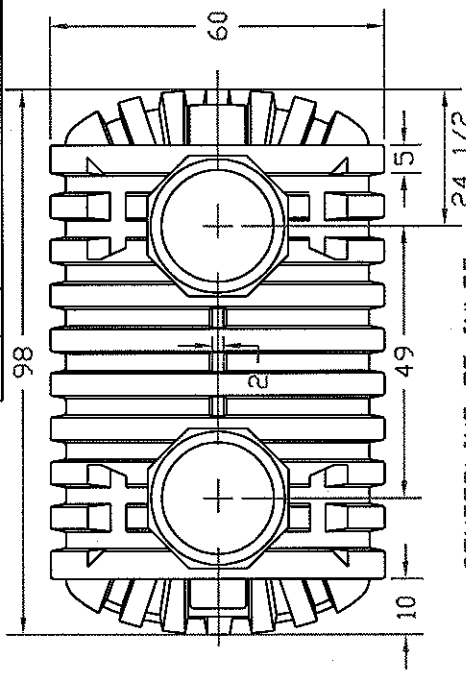


REVISIONS		REVISIONS	
ZONE	REV	DESCRIPTION	DATE
	F	IN/OUT HUBS REM'D	14OCT02
	C	REDRAWN, DIMS UPDATED	17FEB97
	D	WAS 1000 GALLON	26MAY98
	E	WAS 40324	03JUN02

REVISIONS		REVISIONS	
ZONE	REV	DESCRIPTION	DATE
	F	IN/OUT HUBS REM'D	14OCT02
	C	REDRAWN, DIMS UPDATED	17FEB97
	D	WAS 1000 GALLON	26MAY98
	E	WAS 40324	03JUN02



RIB DETAIL 1/4 SCALE



CENTERLINE OF INLET

CENTERLINE OF OUTLET

THREE FULL-CIRCLE RIBS

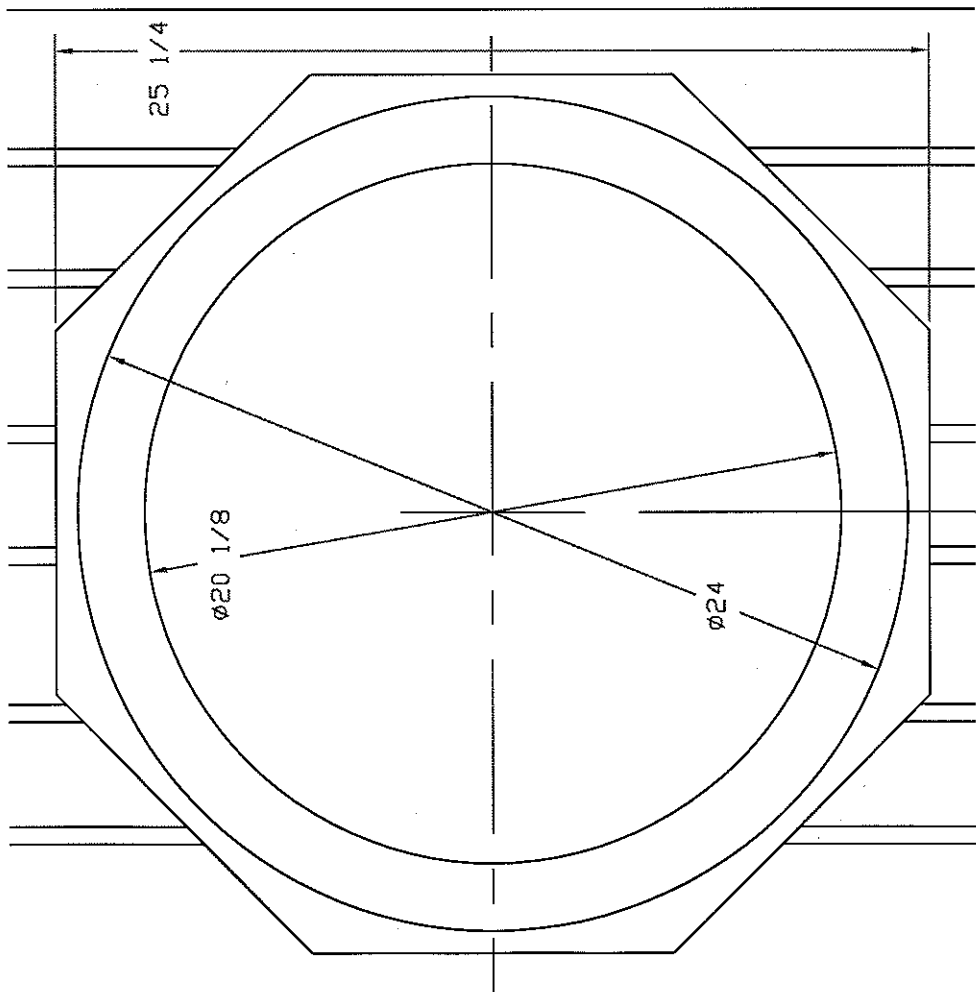
**NORWESCO**  
ST. BONIFACIUS, MN

1200 GALLON CISTERN Ⓣ

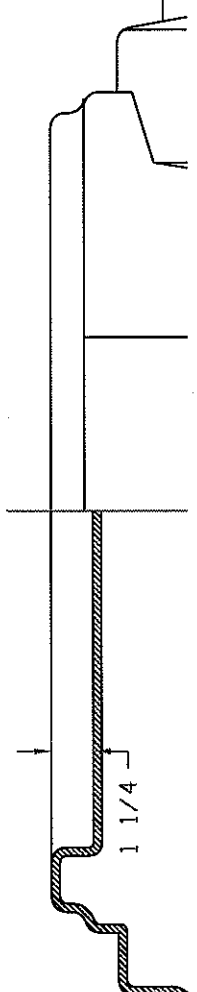
JTP	17FEB97	SIZE B	FSCM NO.	DWG NO. 41329	REV F
SCALE 1/24				SHEET 1 OF 2	



REVISIONS				
ZONE	REV	DESCRIPTION	DATE	APPROVED
	C	REDRAWN, DIMS UPDATED	17FEB97	
	D	WAS 1000 GALLON	26MAY98	
	E	WAS 40324	03JUN02	
	F	IN/OUT HUBS REM'D	14OCT02	



MANHOLE DETAIL, 1/4 SCALE



**NORWESCO**  
ST. BONIFACIUS, MN

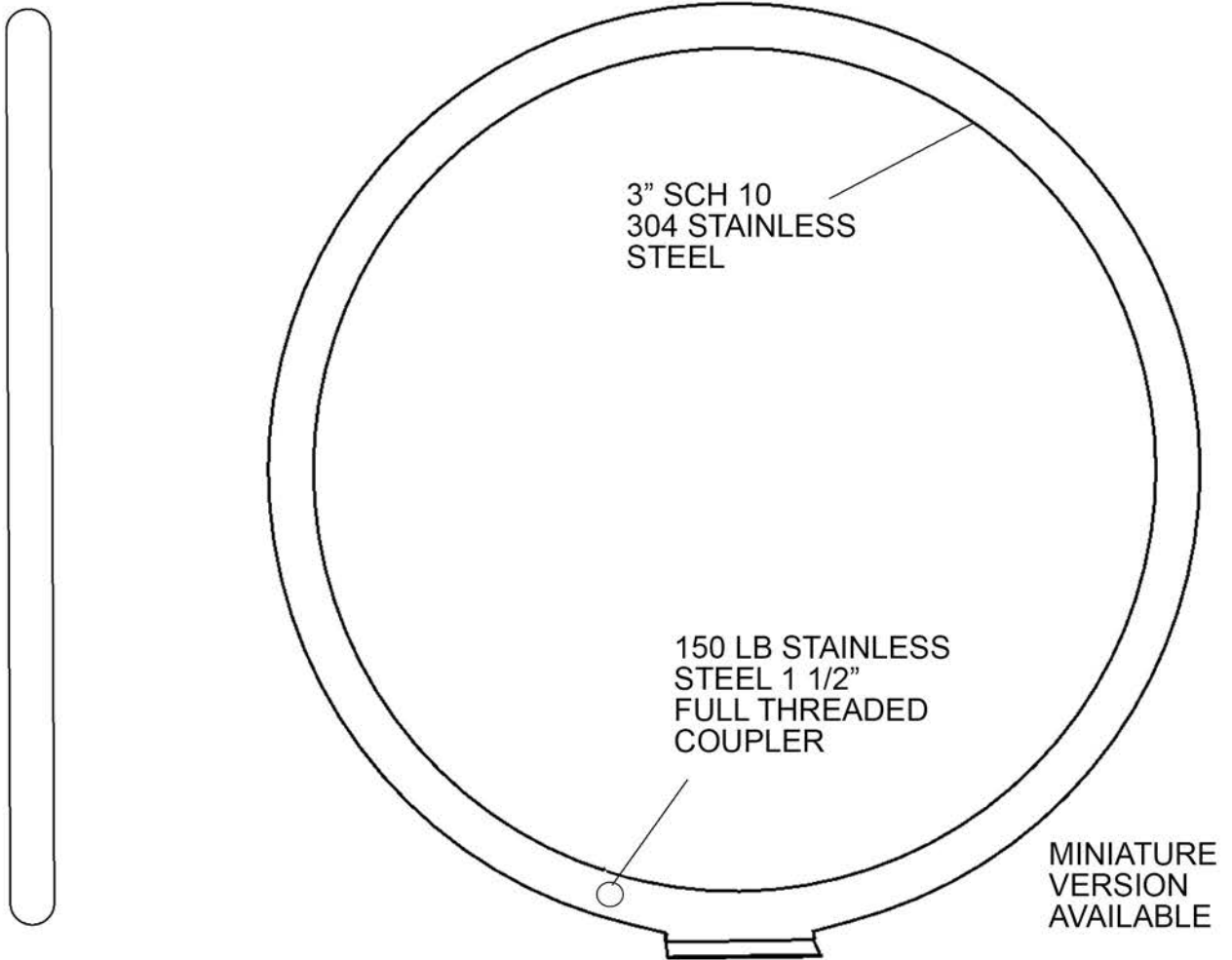
1200 GALLON CISTERN ⓓ

JTP	17FEB97	SIZE	B	FSCM NO.		DWG NO.	41329	REV	F
SCALE NOTED								SHEET 2 OF 2	



## WATER LOOP

Model Number: WH001  
Nozzle: Machined brass / Delrin  
Flow Rate: Variable - 5 to 20 GPM





## WATER LOOP

Water Effect: Five nozzles on the inside of the hoop spray and fan water toward the middle.

Coating: Single Stage Urethane Top Coat - UV Resistant

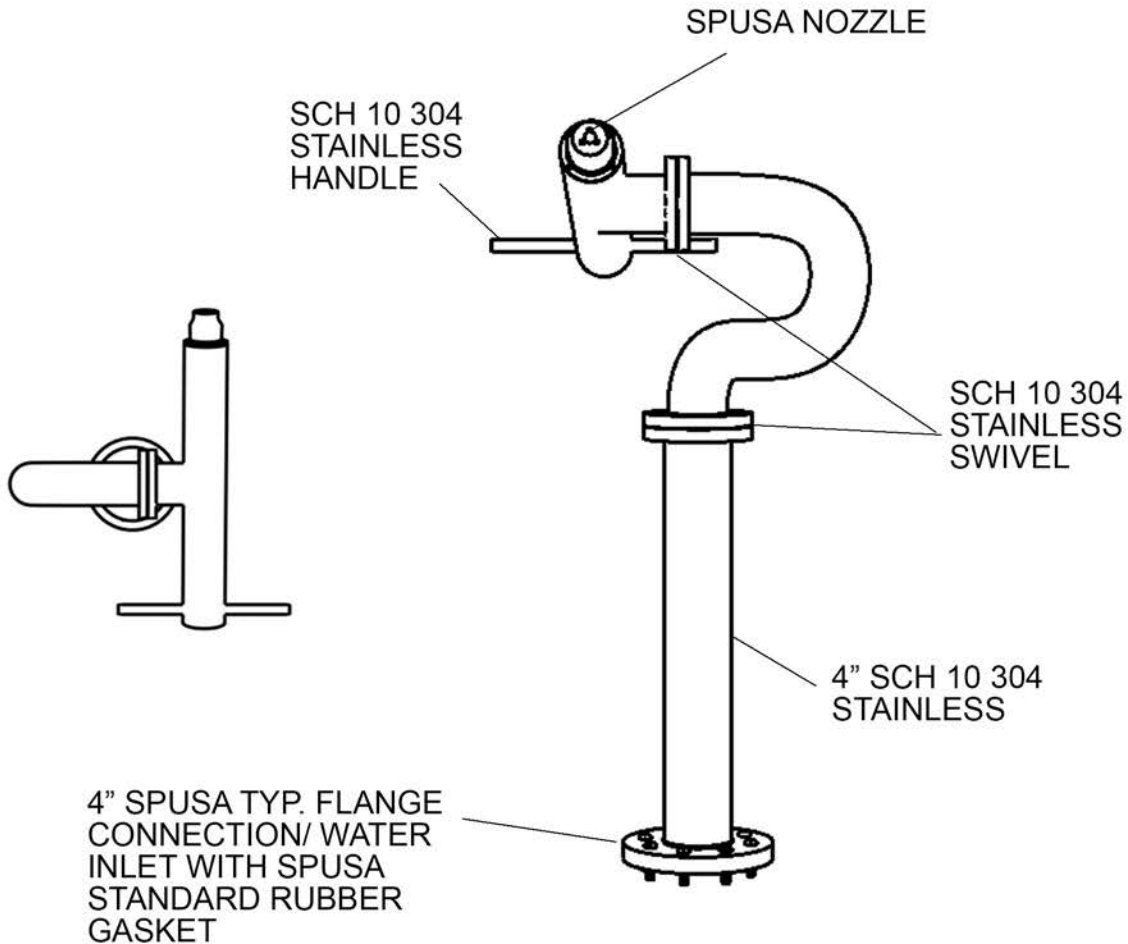
Color: Chosen Upon Purchase





## WATER CANNON

Model Number: CA001  
Gaskets: 1/8" Gasket at Connection  
Base: SB001 SPUSA Standard  
Nozzle: Stainless steel  
Flow Rate: Variable - 5 to 30 GPM





## WATER CANNON

Water Effect: The aimable nozzle shoots a stream of water up to 20 feet.

Coating: Single Stage Urethane Top Coat - UV Resistant

Color: Chosen Upon Purchase





# SUPERFLO<sup>®</sup>

## HIGH PERFORMANCE PUMP WITH TEFC SUPER-DUTY MOTOR

Rugged and versatile, with a TEFC Super-Duty motor for longer service life.

The SuperFlo pump features super-quiet operation and more than 40 years of innovative hydraulic engineering, and now includes a single-phase totally enclosed fan-cooled (TEFC) Super-Duty motor option. As a result, the SuperFlo moves water more effectively with less wear and tear. This means longer life for a higher return on your pump investment.

- TEFC Super-Duty motor options provide superior performance and longevity over traditional open drip proof (ODP) motors.
- Innovative hydraulic design and thick-walled body parts deliver super-quiet operation.
- When outfitting a new pool or looking for a superior replacement for a Hayward<sup>®</sup> Super Pump<sup>®</sup>, the SuperFlo pump drops right into place with ease to minimize installation time and expense.
- TEFC Super-Duty motors come with the TradeGrade advantage, which means they're made exclusively for and sold by the world's most demanding pool professionals. So, you can be confident you're getting unmatched quality and performance whenever they're installed.





## SUPERFLO® HIGH PERFORMANCE PUMP

Strong, dependable performance.

The SuperFlo pump, featuring a TEFC Super-Duty motor, meets all the criteria for a superior pool, spa or water feature pump. SuperFlo is built with innovative materials that will stand up to the most demanding installations and conditions. Meanwhile, the TEFC Super-Duty motor's design prevents water, dust and other contaminants from entering and affecting the motor's operation and longevity.

### KEY FEATURES:

#### TradeGrade advantages

Longer warranties, exclusive rebates, expert advice and service.

#### TEFC Super-Duty Motor

Heavy-duty commercial grade at a consumer price.

#### Cam and Ramp™ Lid

See-through lid permits easy inspection of strainer basket and locks in place with a quarter-turn.

#### Self-priming

For quicker, easier startup.

#### Performance and pressure tested

To ensure superior quality.

#### 115-volt or 230-volt models available

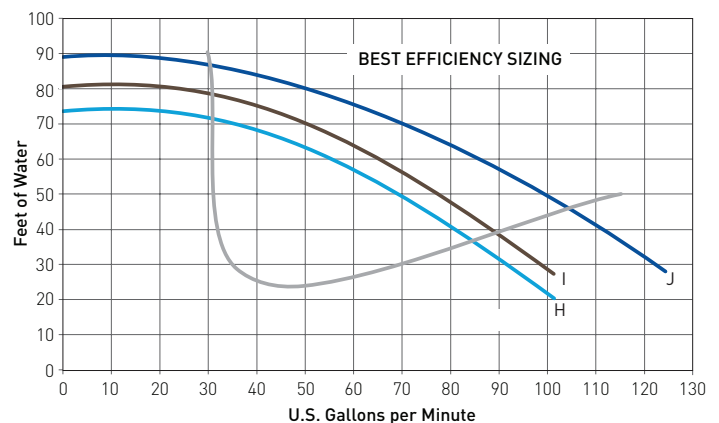
Works with available power sources—no new wiring required.

#### Two-Year Warranty

Learn more about the exclusive warranty by visiting [Pentair.com](http://Pentair.com) for further details.

*Pumps and replacement motors that are single speed and one (1) Total HP or greater cannot be sold, offered for sale, or installed in a residential pool for filtration use in California, Title 20 CCR sections 1601-1609.*

### PERFORMANCE CURVES



Model number	HP	Speed	Curve Key
348144	1 TEFC	Single	H
348145	1-1/2 TEFC	Single	I
348146	2 TEFC	Single	J



## TRADEGRADE

The TradeGrade family of products is exclusively made for and sold by the world's most demanding pool professionals.

1620 Hawkins Ave | Sanford, NC 27330 | United States | 800.831.7133 | [pentair.com](http://pentair.com)

All Pentair trademarks and logos are owned by Pentair plc. SuperFlo® and Cam and Ramp™ are registered trademarks and/or trademarks of Pentair Water Pool and Spa, Inc. and/or its affiliated companies in the United States and/or other countries. Hayward® and Super Pump® are registered trademarks of Hayward Industries, Inc. in the United States and/or other countries. Because we are continuously improving our products and services, Pentair reserves the right to change specifications without prior notice.

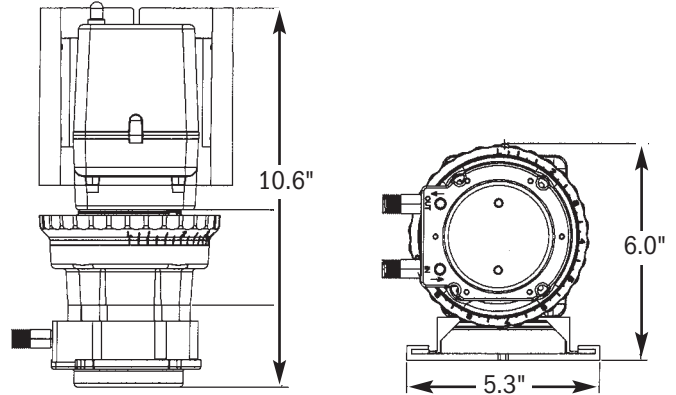
Pentair is an equal opportunity employer.

P1-193 2/19 ©2019 Pentair Water Pool and Spa, Inc. All rights reserved

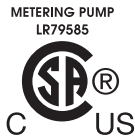
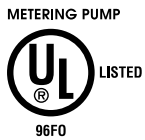


# CLASSIC SERIES SINGLE HEAD ADJUSTABLE SPECIFICATIONS

**STENNER PUMPS®**



**SHIPPING WEIGHT** 9 lbs (3.9 kg)



THIS PUMP IS TESTED AND  
CERTIFIED BY WQA ACCORDING TO  
NSF/ANSI 61 FOR CONTACT WITH  
SODIUM HYPOCHLORITE AND  
WATER ONLY AND NSF/ANSI 372.



**Intertek**  
94247

**CONFORMS TO  
ANSI/NSF STD. 50**

Equipment for swimming pools,  
spas, hot tubs and other  
recreational water facilities.

Agency listings vary by model. Contact factory for details.

## FEATURES

- 3-point roller design assists in anti-siphon protection
- Pump head requires no valves, allows for easy maintenance
- Self-priming against maximum working pressure, foot valve not required
- Pump does not lose prime or vapor lock
- Pumps off-gassing solutions and can run dry
- Output volume is not affected by back pressure
- Injection check valve included with models rated 100 psi (6.9 bar) maximum
- Easy to change pump tube; lubrication is not required
- Pump tubes and pump heads interchange between models
- Models (Santoprene® only) tested by Water Quality Association to conform to ANSI/NSF STD 61
- Adjustable models (Santoprene® only) tested by ETL to conform to ANSI/NSF STD 50

# CLASSIC SERIES SINGLE HEAD ADJUSTABLE SPECIFICATIONS

**STENNER PUMPS®**

## FLOW RATE OUTPUT CONTROL

External dial ring, 5-100% in 2.5% increments

## MAXIMUM WORKING PRESSURE

25 psi (1.7 bar), 100 psi (6.9 bar)

## MAXIMUM OPERATING TEMPERATURE

125°F (52°C)

## MAXIMUM SUCTION LIFT

25 ft (7.6 m) vertical lift, based on water

## MOTOR TYPE

1/30 HP, shaded pole, class B

## SHAFT RPM (average maximum)

26 or 44

## DUTY CYCLE

Continuous

## MOTOR VOLTAGE (Amp Draw)

120V 60Hz 1PH (1.7)

220V 60Hz 1PH (0.9)

230V 50Hz 1PH (0.9)

250V 50Hz 1PH (0.9)

## POWER CORD TYPE

120V 60Hz, 220V 60Hz: SJTOW,

230V 50Hz, 250V 50Hz: H05VV-F

## POWER CORD PLUG END

120V 60Hz NEMA 5-15P

220V 60Hz NEMA 6-15P

230V 50Hz CEE7/7

250V 50Hz CEE7/7

## MATERIALS OF CONSTRUCTION

**All Housings** Polycarbonate

### Pump Tube

Santoprene®, FDA approved or Versilon™

### Check Valve Duckbill

Santoprene®, FDA approved or Pellethane®†

### Pump Head Rollers

Polyethylene

### Roller Bushings

Oil impregnated bronze

### Suction/Discharge Tubing, Ferrules

Polyethylene, FDA approved

### Tube and Injection Fittings

PVC or Polypropylene, NSF listed

### Connecting Nuts

PVC, NSF listed

### Suction Line Strainer and Cap

PVC or Polypropylene, NSF listed with

Ceramic Weight

### All Fasteners

Stainless steel

### Pump Head Latches

Polypropylene

## ACCESSORY KIT SHIPPED WITH EACH PUMP

**3** Connecting nuts 1/4" or 3/8"

**3** Ferrules 1/4" or 6 mm *Europe*

**1** Injection check valve 100 psi (6.9 bar) max.  
OR **1** Injection fitting 25 psi (1.7 bar) max.

**1** Weighted suction line strainer  
1/4", 3/8" or 6 mm *Europe*

**1** 20' Roll suction/discharge tubing  
1/4" or 3/8", white or UV black  
OR 6 mm White *Europe*

**1** Additional pump tube

**2** Additional latches

**1** Mounting bracket

**1** Manual

\* Santoprene® is a registered trademark of Exxon Mobil Corporation.

\*\* Versilon™ is a registered trademark of Saint-Gobain Performance Plastics.

† Pellethane® is a registered trademark of Lubrizol Advanced Materials, Inc.

## FLOW RATE OUTPUT CHART

**Single Head Adjustable 25 psi (1.7 bar) maximum** Approximate 20:1 turndown, 2.5% increments

	Model	Item Number Prefix	Pump Tube	Gallons per Day	Gallons per Hour	Ounces per Minute	Liters per Day	Liters per Hour	Milliliters per Minute	Liters per Day	Liters per Hour	Milliliters per Minute				
45 SERIES	45M1	45MJL1	1	0.2 to 3.0	0.01 to 0.13	0.02 to 0.27	0.8 to 11.4	0.03 to 0.48	0.56 to 7.92	0.6 to 9.1	0.02 to 0.38	0.31 to 6.32				
	45M2	45MJL2	2	0.5 to 10.0	0.02 to 0.42	0.04 to 0.89	1.9 to 37.9	0.08 to 1.58	1.32 to 26.32	1.5 to 30.3	0.06 to 1.26	1.04 to 21.04				
	45M3	45MJL3	3	1.1 to 22.0	0.05 to 0.92	0.10 to 1.96	4.2 to 83.3	0.18 to 3.47	2.92 to 57.85	3.3 to 66.6	0.14 to 2.78	2.29 to 46.25				
	45M4	45MJL4	4	1.7 to 35.0	0.07 to 1.46	0.15 to 3.11	6.4 to 132.5	0.27 to 5.52	4.44 to 92.01	5.1 to 106.0	0.21 to 4.42	3.54 to 73.61				
	45M5	45MJL5	5	2.5 to 50.0	0.10 to 2.08	0.22 to 4.44	9.5 to 189.3	0.40 to 7.89	6.60 to 131.43	7.6 to 151.4	0.32 to 6.31	5.28 to 105.14				
85 SERIES	85M1	85MJL1	1	0.3 to 5.0	0.01 to 0.21	0.03 to 0.44	1.1 to 18.9	0.05 to 0.79	0.76 to 13.13	0.9 to 15.1	0.04 to 0.63	0.52 to 10.49				
	85M2	85MJL2	2	0.8 to 17.0	0.03 to 0.71	0.07 to 1.51	3.0 to 64.4	0.13 to 2.68	2.08 to 44.65	2.4 to 51.5	0.10 to 2.15	1.67 to 35.76				
	85M3	85MJL3	3	2.0 to 40.0	0.08 to 1.67	0.18 to 3.55	7.6 to 151.4	0.32 to 6.31	5.27 to 105.14	6.1 to 121.1	0.25 to 5.05	4.24 to 84.10				
	85M4	85MJL4	4	3.0 to 60.0	0.13 to 2.5	0.27 to 5.33	11.4 to 227.1	0.48 to 9.46	7.92 to 157.71	9.1 to 181.7	0.38 to 7.57	6.32 to 126.18				
	85M5	85MJL5	5	4.3 to 85.0	0.18 to 3.54	0.38 to 7.55	16.3 to 321.8	0.68 to 13.4	11.32 to 223.40	13.0 to 257.4	0.54 to 10.73	9.03 to 178.75				
									Approximate Output @ 60Hz				Approximate Output @ 50Hz			

**Single Head Adjustable 100 psi (6.9 bar) maximum** Approximate 20:1 turndown, 2.5% increments

	Model	Item Number Prefix	Pump Tube	Gallons per Day	Gallons per Hour	Ounces per Minute	Liters per Day	Liters per Hour	Milliliters per Minute	Liters per Day	Liters per Hour	Milliliters per Minute				
45 SERIES	45MHP2	45MJH1	1	0.2 to 3.0	0.01 to 0.13	0.02 to 0.27	0.8 to 11.4	0.03 to 0.48	0.56 to 7.92	0.6 to 9.1	0.02 to 0.38	0.31 to 6.32				
	45MHP10	45MJH2	2	0.5 to 10.0	0.02 to 0.42	0.04 to 0.89	1.9 to 37.9	0.08 to 1.58	1.32 to 26.32	1.5 to 30.3	0.06 to 1.26	1.04 to 21.04				
	45MHP22	45MJH7	7	1.1 to 22.0	0.05 to 0.92	0.10 to 1.96	4.2 to 83.3	0.18 to 3.47	2.92 to 57.85	3.3 to 66.6	0.14 to 2.78	2.29 to 46.25				
85 SERIES	85MHP5	85MJH1	1	0.3 to 5.0	0.01 to 0.21	0.03 to 0.44	1.1 to 18.9	0.05 to 0.79	0.76 to 13.13	0.9 to 15.1	0.04 to 0.63	0.52 to 10.49				
	85MHP17	85MJH2	2	0.8 to 17.0	0.03 to 0.71	0.07 to 1.51	3.0 to 64.4	0.13 to 2.68	2.08 to 44.65	2.4 to 51.5	0.10 to 2.15	1.67 to 35.76				
	85MHP40	85MJH7	7	2.0 to 40.0	0.08 to 1.67	0.18 to 3.55	7.6 to 151.4	0.32 to 6.31	5.27 to 105.14	6.1 to 121.1	0.25 to 5.05	4.24 to 84.10				
									Approximate Output @ 60Hz				Approximate Output @ 50Hz			

NOTE: Injection check valve included with pumps rated 100 psi (6.9 bar) maximum.

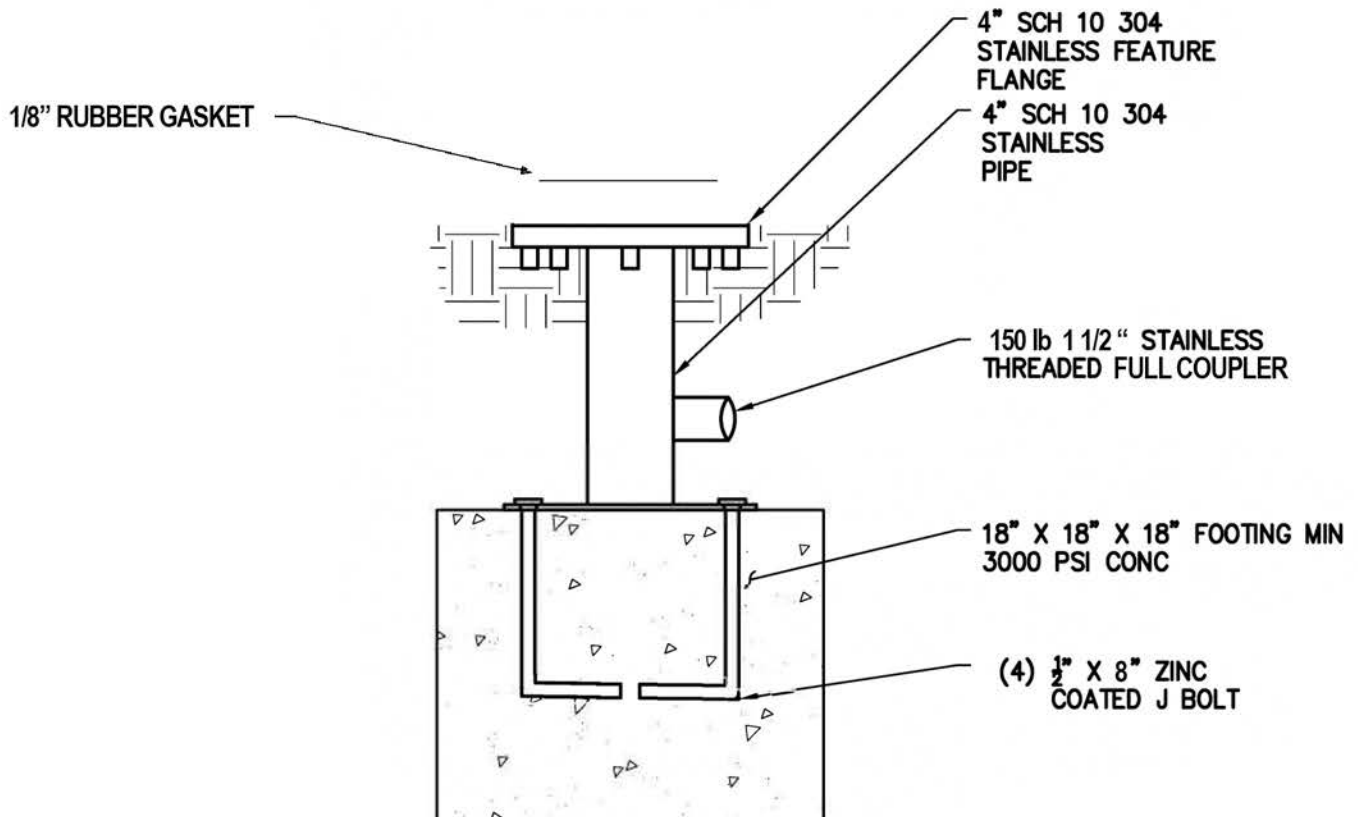
**!** NOTICE: The information within this chart is solely intended for use as a guide. The output data is an approximation based on pumping water under a controlled testing environment. Many variables can affect the output of the pump. Stenner Pump Company recommends that all metering pumps undergo field calibration by means of analytical testing to confirm their outputs. The information contained in this flyer is not intended for specific application purposes. Stenner Pump Company reserves the right to make changes to prices, products, and specifications at any time without prior notice.





## STANDARD FEATURE BASE

Model Number: SB001  
Gaskets: 1/8" Gasket at connection

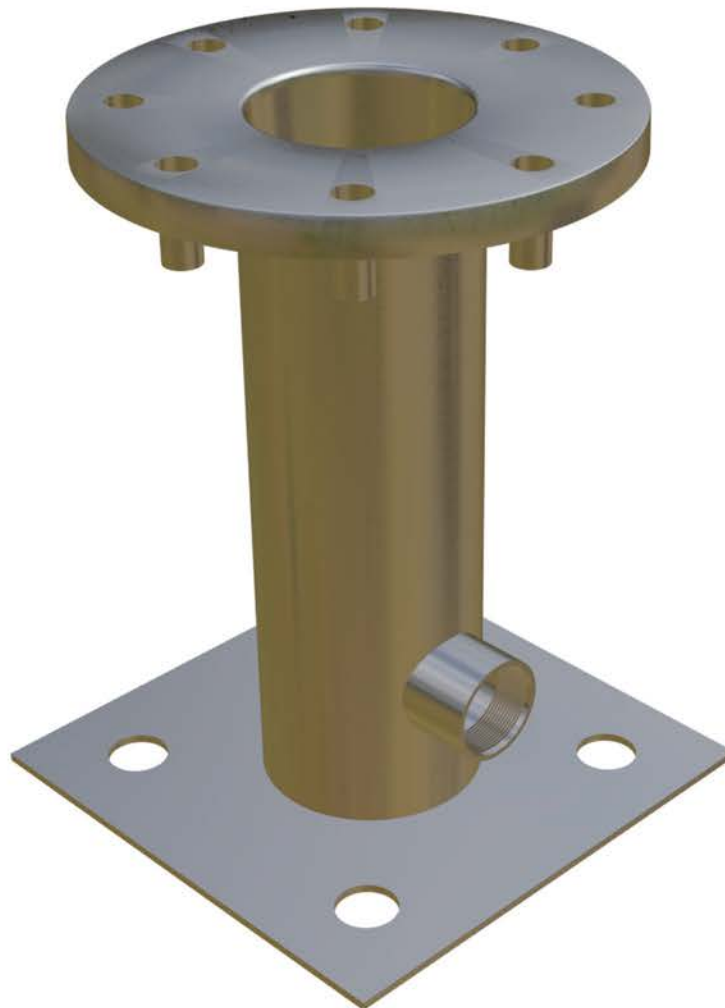






## STANDARD FEATURE BASE

Water Effect: Supplies the various SPUSA water features.



## HIGH OUTPUT AMALGAM UV SYSTEMS FOR COMMERCIAL POOLS AND SPA'S



ChlorKing's Sentry ultraviolet light systems are leading the way to better, safer water. Their unique, forward-thinking design employs high output amalgam technology for better chloramine control and inactivation of chlorine resistant bacteria. Sentry Aqua Guard systems are designed for commercial pools and spa's, and they pay for themselves through lower cost of operation and a longer lasting system.

### The SAG 120APVC

The ChlorKing® Sentry SAG 120APVC uses low pressure high output amalgam UV technology to achieve 4 log reduction for the inactivation of cryptosporidium and other chlorine resistant bacteria found in swimming pools and spa's. The system is designed with a patent pending quick disconnect sleeve assembly for removal / replace or repair, and can be installed horizontally or vertically to fit in most existing pump rooms. The SAG 120APVC is built with schedule 80 PVC and is lined with 316L stainless steel for a highly reflective interior.

### Specifications

- High output amalgam lamps [1]
  - › 254nm wave length for sterilization
  - › 185nm wave length for oxidation
  - › 13,000 hour EOL (end of life)
- Ozone production
  - › 12 grams per hour
- Built in safety sensors
  - › Pressure or flow sensor
  - Safety cover removal sensor
  - Audible or LED alarm for loss of wave length
- Operating temperature
  - › 35°F (2°C) to 115°F (46°C) air temperature
  - › 40°F (4°C) to 104°F (40°C) water temperature

- Electrical specifications
  - › Max primary amps – (1.2)
  - › Voltage / Hz – (120v 60Hz single phase)
  - › Breaker required – (10 amp)
- Dimensions
  - › 11"W x 45 5/8"H (UV chamber)
  - › 13"W x 17"H (Power box)
- Flanges / Unions
  - › 2" inlet & outlet unions
- Max flow to achieve 45mj/cm2 @ 95% transmittance
  - › 75 gpm
- Max operating pressure
  - › 50 psi
- Chamber material
  - › Schedule 80 PVC with 316L stainless steel interior

### Main Features

- High output amalgam lamps for chloramine reduction
- 254 & 185nm wave length lamps
- Ozone production for hydroxyl radicals
- Environmentally friendly
- Improved water and air quality for bather comfort
- NSF-50 tested and certified
- UL-1081 tested and certified
- CSA-C22.2 tested and certified

### Applications

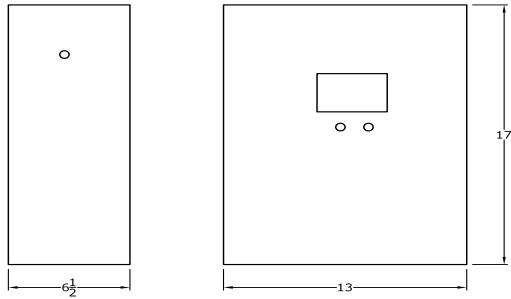
- Hotels / motels
- Fitness clubs / swim schools
- Country clubs / community pools
- Spray pads / fountains

### Order Information

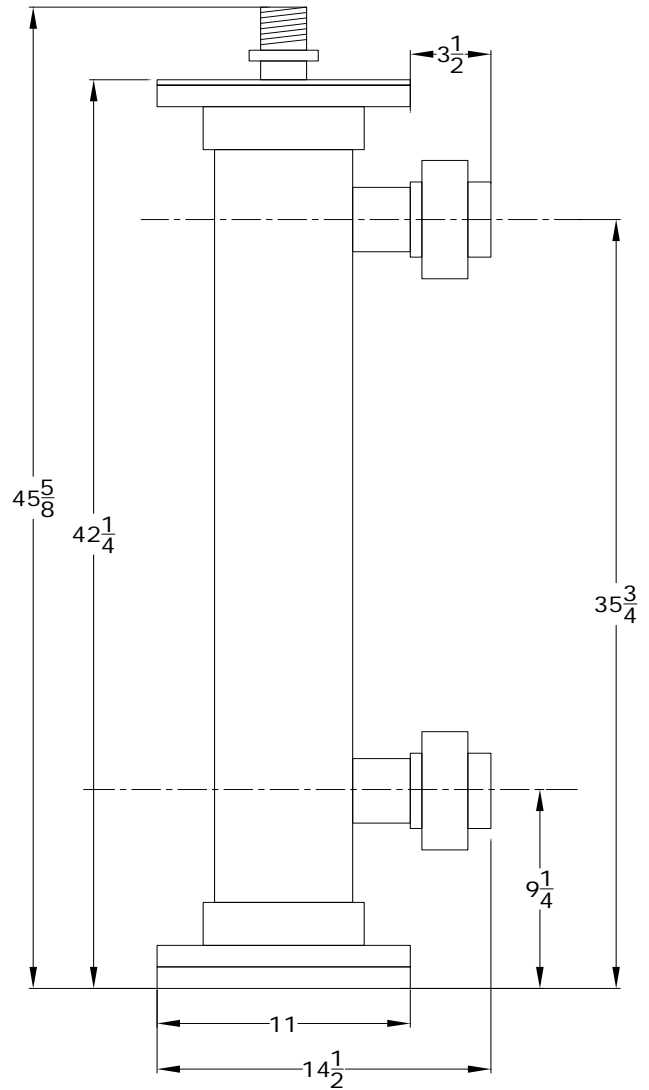
- Product code: SAG-120APVC

# SAG-120APVC DIMENSIONS & LAYOUT

Power Supply



Chamber



ChlorKing pioneered on-site chlorine generating technology in the 1970's. Realizing the potential for swimming pools and commercial applications, the company began generating "ultimate water" with simple, yet highly advanced technology. Today, ChlorKing® leads the way in commercial saline chlorination and is consistently seeking new frontiers in sanitizing solutions including ultraviolet light technology and their NEX-GEN® pH onsite chlorine generators. These environmentally friendly solutions are changing the way we treat H<sub>2</sub>O.



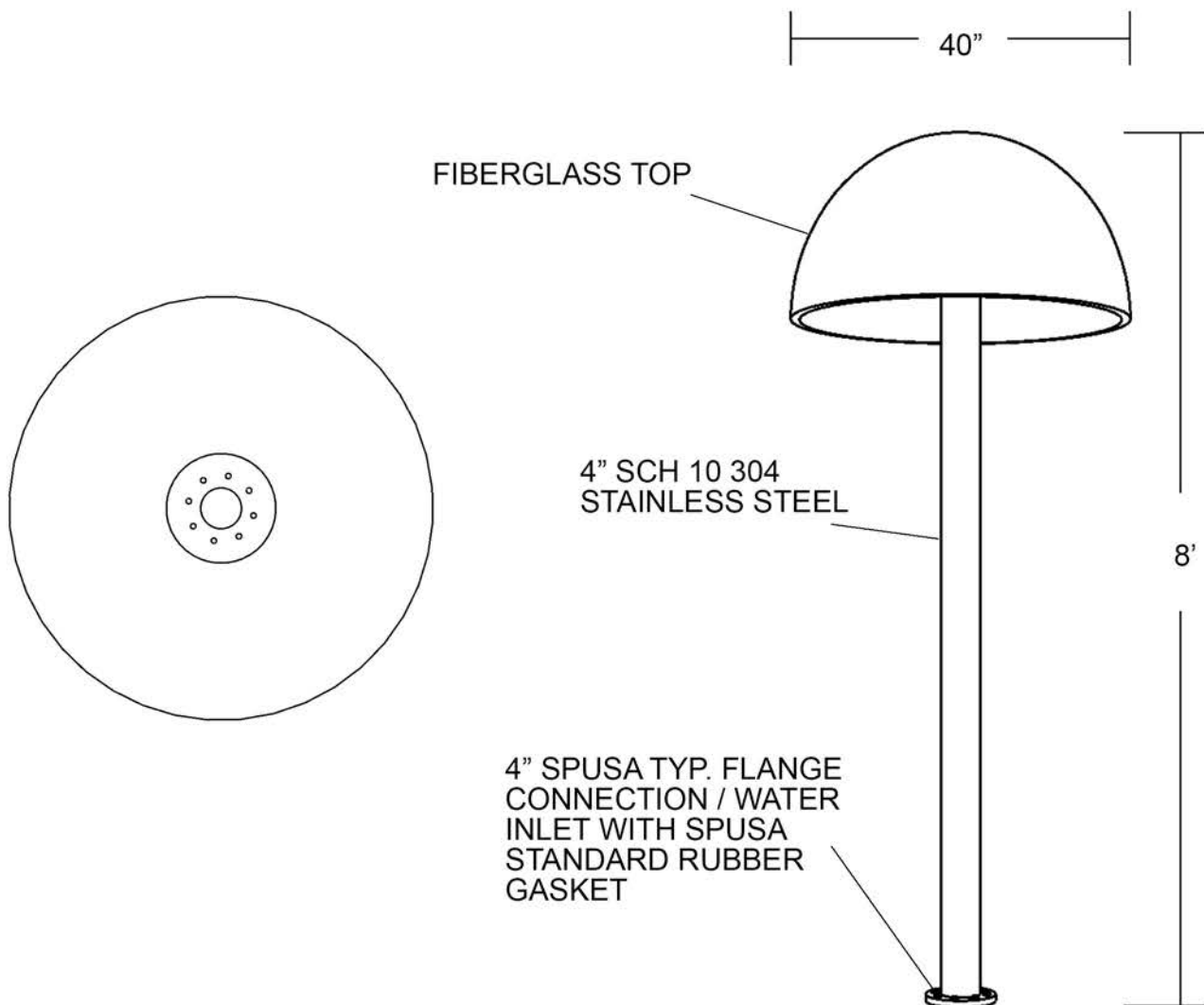
Safer water through smarter technology.

Salt Chlorination Systems • Ultraviolet Light Systems • Mixed Oxidant Systems



## SMALL MUSHROOM

Model Number: MF002  
Gaskets: 1/8" Gasket at connection  
Base: SB001 SPUSA Standard  
Flow Rate: Variable - 10 to 30 GPM







## SMALL MUSHROOM

Water Effect: Water bubbles from the top, flows down the sides, and cascades down in a circle.  
Coating: Single Stage Urethane Top Coat - UV Resistant  
Color: Chosen Upon Purchase

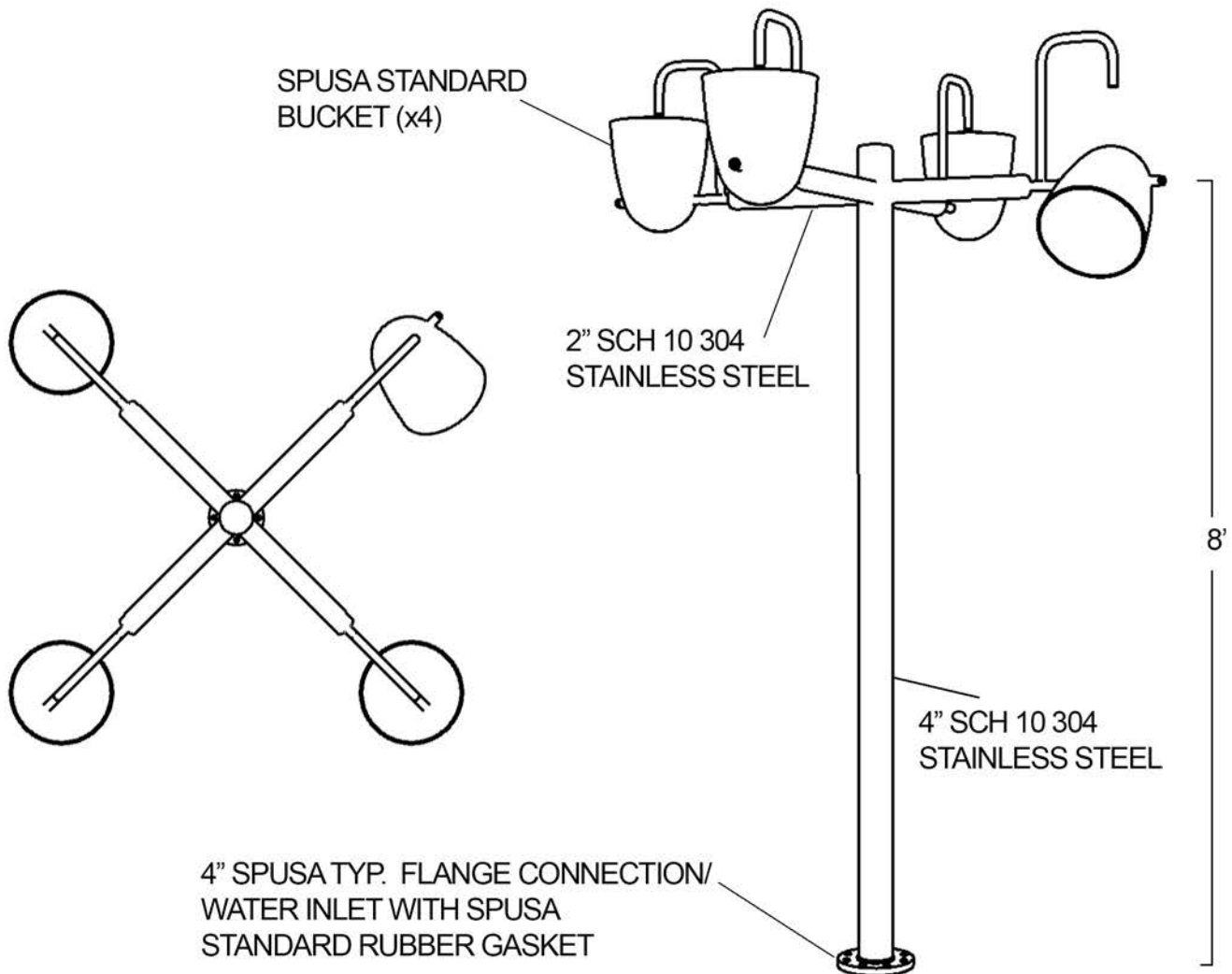






## QUAD DUMP BUCKET

Model Number: DB004  
Gaskets: 1/8" Gasket at connection  
Base: SB001 SPUSA Standard  
Flow Rate: Variable - 10 to 50 GPM





## QUAD DUMP BUCKET

Water Effect: Water fills buckets to the tipping point and then they dump.  
Coating: Single Stage Urethane Top Coat - UV Resistant  
Color: Chosen Upon Purchase



# M820 pH/Dual ORP Controller



## Owner's Manual



*Simply intelligent water care.*

# Table of Contents

- I. Introduction page 2
- A. Water Chemistry page 2
- B. Safety page 3
- C. System Components page 4
- D. Specifications page 7
- E. Controller Panel Descriptions page 8
- F. Electrical Descriptions page 10
  
- II. Installation page 11
- A. Setup page 11
- B. Tools page 11
- C. Procedure page 11
  
- III. Operation page 15
- A. Startup and Shutdown page 15
- B. Modes and Adjustments page 16
- C. Maintenance page 24
  
- IV. Troubleshooting page 26
  
- V. Warranty page 29



## I. Introduction

### A. Water Chemistry

Water chemistry is a complex science that contains many variables. These variables not only affect the water environment itself, but they can have adverse effects on your equipment as well as your health. These are only some of the factors which we follow closely to ensure the most healthy water interactions:

pH is the measurement of the acidity or basicity in an aqueous solution. A measurement below 7 is considered acid, while a measurement above 7 is base or alkaline. It is a significant factor in determining the water quality as it affects sanitizer levels, water color, and human reaction to the water.

ORP (Oxidation Reduction Potential) is the measurement of the oxidizing capacity present in water. ORP cannot be fooled by the effects of pH, total dissolved solids (TDS), stabilizers, and non-chlorine oxidizers. A typical ORP sensor measures Hypochlorous Acid (HOCl), which is the more effective component of free chlorine. A higher ORP reading equates to the sanitizer working more effectively.


Water balance is comprised of pH, calcium hardness, total alkalinity, temperature, and TDS. When water is balanced, the Langelier saturation index is 0. Values above +0.3 lead to scaling and cloudy water, while values below -0.3 can cause corrosion of pool equipment and surfaces. If the water balance is not fixed in a timely manner, secondary effects can lead to rapidly declining water conditions that can affect the health of the water occupants.

pH and ORP work conversely to one another, and are affected by other factors such as temperature, Cyanuric Acid, and TDS that can increase the negative impacts of unbalanced water.



## B. IMPORTANT SAFETY INSTRUCTIONS

### 1. READ AND FOLLOW ALL INSTRUCTIONS.

2. **Risk of electric shock:** Connect the controller to a dedicated ground-fault circuit interrupter (GFCI) circuit breaker.
  - a. A green colored terminal or a terminal marked G, GR, Ground, Grounding, or the  symbol\* is located inside the supply terminal box or compartment. To reduce the risk of electrical shock, this terminal must be connected to the grounding means provided in the electrical supply service panel with a continuous copper wire equivalent in size to the circuit conductors supplying this equipment.  
*\*IEC Publication 417, Symbol 5019.*
3. Disconnect power before servicing the controller.
4. Inspect all power cords frequently. Any damaged cords should be replaced immediately to reduce the risk of injury by shock.
5. Always maintain a record of manual water chemistry readings using an accurate test kit. Automated controllers are not a substitute for this Health Department requirement.
6. **WARNING** – To reduce the risk of injury, do not permit children to use this product unless they are closely supervised at all times.
7. **Danger** – Risk of injury.
  - a. Replace damaged cord immediately.
  - b. Do not bury cord.
  - c. Connect to a grounded, grounding type receptacle only.
8. **WARNING** – Risk of electric shock. Install at least 5 feet (1.5m) from inside wall of water enclosure using non-metallic plumbing.
9. Operation of this controller without a functioning flow-switch will void the NSF Certification.
10. **WARNING** – Do not install this controller where it is accessible to the public.
11. **SAVE THESE INSTRUCTIONS.**

## C. System Components

1. IPS M820 pH/Dual ORP Controller
  - a. It allows automatic monitoring of water sanitization and pH balance through a simple, user-friendly interface, resulting in easier management of water balance in swimming pools, spas, or circulating water environments.
  - b. It can be easily installed into your existing pool environment and equipment, or can be customized to your needs.
  - c. It monitors and displays the pH and ORP levels using LEDs and digital readouts on the front panel. If the temperature sensor is installed, the M820 will monitor temperature and display on the front panel when in Temp mode.
  - d. It monitors up to two chemical tanks equipped with level switches and displays status using LEDs on the front panel.

In addition, six separate function buttons allow simple pushbutton control of these individual parameters:

- 1) Set Level – ORP or pH level to be maintained,
  - 2) Dose Timer – Timed or continuous feed modes,
  - 3) Delay Timer – Delay time between feed cycles,
  - 4) Over Timer – Maximum feed cycles or time allowed,
  - 5) High Alert – Maximum level of ORP or pH allowed,
  - 6) Low Alert – Minimum level of ORP or pH allowed,
  - 7) pH Cal – pH calibration for variation in pH sensors.
- e. If the ORP (sanitizer) levels fall below a preset set level, then the controller will activate the chemical feeder until the preset set level is reached. The pH is similarly maintained.
2. Flow Cell with Flow Switch
    - a. An injection-molded flow cell with integrated flow switch houses the pH and ORP sensors, and partners with the M820 controller to monitor the pH and ORP levels in the water.

- b. The flow switch verifies that water is flowing during a feed cycle, and sends the controller instructions to deactivate the feed if water is not flowing.
  - c. Operation of this controller without a functioning flow-switch will void the NSF Certification.
3. pH and ORP Sensors
- a. pH Sensor – standard (Use only IPS Controllers part # SXPH to maintain NSF Certification)
  - b. ORP Platinum Sensor – standard (Use only IPS Controllers part # SXORP to maintain NSF Certification)
  - c. ORP Gold Sensor – for use with Salt Chlorine systems (Use only IPS Controllers part # SXORP-G to maintain NSF Certification)
4. Fittings – tubing connectors (2) for tapping installation of flow cell input/output
5. In-line Filter with 2-way valves
6. Tubing – 25 feet of 3/8"
7. Chemical Pump – Peristaltic pump, choice of sizes and brands (optional)
8. Mounting Board – ABS plastic with mounting holes and stainless hardware (16" x 12" standard, 24" x 19" optional)
9. Temperature Sensor – Senses the current water temperature and displays the temperature in the display when in Temp mode.
10. Remote Monitoring – When connected to the Internet through the Internal Ethernet connection, the controller will send data to a central website. Users can monitor controller activity remotely and report on activity for a date range. **Note:** A sign-up fee applies.

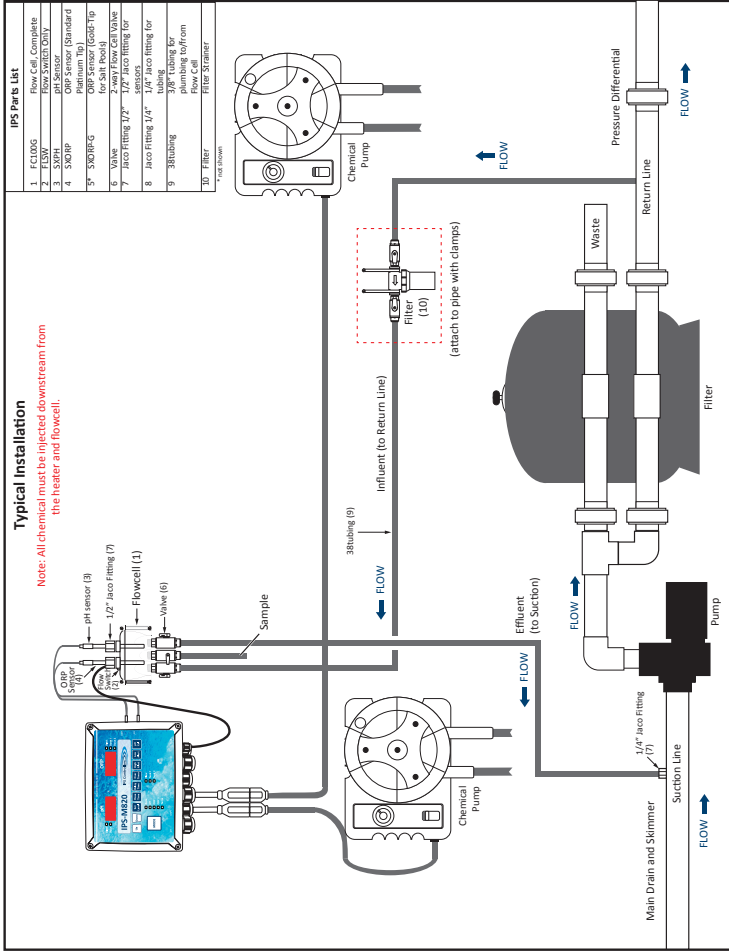


Figure 1: This is a typical installation using IPS' system package, which consists of an M820 pH/dual ORP Controller, flow cell with switch, and two pumps mounted on the large board.

## **D. Specifications**

*Enclosure:* 7.95”L x 5.98”W x 3.54”D

*Electrical Input/Output:* 120 VAC, 50 - 60 Hz

*ORP Set Level:* 400 mV to 900 mV

*pH Set Level:* 7.0 to 8.0

*Dose Timer:* Off, Continuous, or Timed cycle

*Delay Time:* 1 - 99 minutes

*Overfeed Timer:* Off, 20-100 timed cycles, or 20-180 continuous minutes, default of 60

*High Alert:* pH default of 8.0, ORP default of 900

*Low Alert:* pH default of 7.0, ORP default of 100

*Readout:* Function LED and numerical digital displays

*Alarm:* Red alert LEDs with optional external audible/visible alarm



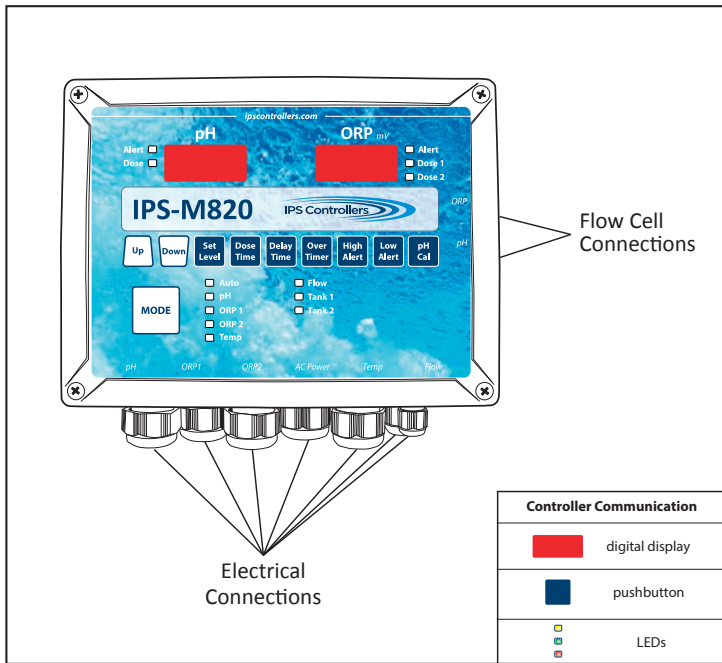


Figure 2: M820 Controller Components Connections

## E. Controller Panel Descriptions

1. Digital Displays and Function LEDs
  - a. pH
    1. Alert - red LED
    2. Dose - green LED
  - b. ORP
    1. Alert - red LED
    2. Dose 1 - yellow LED
    3. Dose 2 - yellow LED

2. Mode - pushbutton adjustments
  - a. Auto - red LED
  - b. pH standby - green LED
  - c. ORP1 standby - yellow LED
  - d. ORP2 standby - yellow LED
  - e. Temp display & calibrate - green LED
  - f. OFF mode - In standby, press and hold Mode button for 3 seconds to turn controller off.
3. Arrows - pushbutton adjustments
  - a. Up - For increasing feature values
  - b. Down - For decreasing features values
4. Set Level – pushbutton adjustments
5. Dose Timer – pushbutton adjustments
6. Delay Time - pushbutton adjustments
7. Over Timer – pushbutton adjustments
8. High Alert – pushbutton adjustments
9. Low Alert – pushbutton adjustments
10. pH Cal – pushbutton adjustments
11. Flow - green LED
12. Tank 1 - red LED
13. Tank 2 - red LED
14. Electrical Connections (peripherals)
  - a. pH output (left receptacle) - max. 3.15 amps @ 120 VAC max, 1.6 amps@240 VAC
  - b. ORP1 output (center receptacle)- max. 3.15 amps @ 120 VAC max, 1.6 amps@240 VAC

- c. ORP2 output (right receptacle) - max. 3.15 amps @ 120 VAC max, 1.6 amps@240 VAC
- d. AC power - 120 VAC, 50-60 Hz
- e. Flow - from flow cell
- f. Tank 1 - from tank level switch (optional)
- g. Tank 2 - from tank level switch (optional)
- h. External audible/visible alarm (optional)
- i. pH sensor - BNC connection
- j. ORP sensor - BNC connection
- k. Optional dry contact ORP1 output (contact factory for instructions)

## F. Electrical Descriptions

- 1. Power
  - a. 120 VAC, 50-60 Hz, 3-wire grounded NEMA 5 power cord. GFCI source required. **Note: There is an option to convert to 240 VAC input/output.**
- 2. Dip Switches (1-4)
  - a. 1: pH/ORP interlock (default: **OFF**)  
No ORP1 or ORP2 feed if pH is feeding (ON).
  - b. 2: pH/ORP alert interlock (default: **ON**)  
No ORP1 or ORP2 if pH is in alert mode (ON).
  - c. 3: Acid/Base default acid (default: **OFF**)
    - 1. Feed base chemical when pH level falls below set point. (ON)
    - 2. Feed acid chemical when pH above set point. (OFF)
  - d. 4: Not in use.

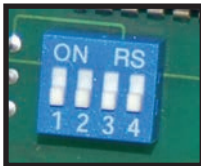


Figure 3: Dipswitches

## **II. Installation**

### **A. Setup (Installation video available at [ipscontrollers.com](http://ipscontrollers.com))**

1. Turn off all peripheral equipment such as heaters, chemical feeders, and pumps.
2. Relieve pressure from the filtration system.

### **B. Tools**

1. Cordless drill
2. 1/4" NPT Tap
3. 7/16" drill bit
4. 1/4" or 3/8" drill bit for Temp Sensor (optional)
5. Masonry drill bit and anchors, or other appropriate fasteners
6. 13/16" wrench or channel-lock pliers

### **C. Procedure**

1. Location
  - a. Wall area with easy access
  - b. Within 8 feet of feeder
  - c. At least 10 feet from water edge
  - d. Close proximity to time clock
  - e. Within 6 feet of GFCI power source
2. Mounting
  - a. Controller and flow cell are factory-mounted to ABS board for your convenience.
  - b. Securely mount ABS mounting board with M820 controller and flow cell on wall (vertical installation).

- c. If applicable, securely attach the peristaltic pumps to the optional larger ABS mounting board with the provided hardware.
- d. Drill a 7/16" hole and tap a 1/4" NPT port to a location downstream from the filter and upstream from the heater and any chemical introduction points. Install a tubing connector and flex tubing to be connected to the left side flow cell port containing the flow switch. The in-line filter will also be installed in this line and mounted to a horizontal pipe with band clamps (included). **Note: Verify that the filter is installed with directional arrows pointing in the direction of the flow.**
- e. Drill a 7/16" hole and tap a 1/4" NPT port to a location that is subject to vacuum or reduced pressure (after heater). Install a tubing connector and flex tubing to be connected to the right side flow cell port. **Note: We recommend that this tubing connector be installed into the drain hole on the suction side of the pump for best performance.**
- f. Cut a 3" - 6" length of flex tubing and insert into the flow cell's sample stream port (center).

### 3. pH and ORP Sensors

**Note: Carefully unpack the pH and ORP sensors and set aside in a clear area until ready to install into the flow cell.**

- a. Verify that the M820 controller power is OFF.
  - b. Remove the plastic protective caps from the sensors and store in a separate location for future re-use.
  - c. Slide the glass end of each sensor (pH and ORP) into one of the compression fittings located at the top of the flow cell. Ensure that the tip is submerged into the water to within 1/2" from the bottom of the flow cell. Hand tighten each nut fitting.
- ### 4. Temperature Sensor (optional)
- a. Drill a 1/4" or 3/8" inch hole (depending on the sensor size) after the filter and before the heater.



- b. Insert the temperature sensor into the hole and secure with a band clamp (included).
  - c. Run the sensor cable into the controller through the strain relief marked "temp" and connect to the terminal block on the front circuit board marked "Temp".
5. Remote Monitoring Ethernet Connection (optional External Monitoring Module)
  - a. Run the serial cable with connector from the External Monitoring Module into the M820 through the empty strain relief connector on the bottom of the controller and connect to the serial connector on the circuit board of the M820.
  - b. Run the Ethernet connector from the router or a Wi-Fi adapter through the empty strain relief on the bottom of the External Monitoring Module, and plug into Ethernet connection on circuit board.
  - c. When a valid connection is made to the Internet, the green LED will light up and the orange LED will blink intermittently on the circuit board of the External Monitoring Module. The M820 is now communicating with the IPS Controllers Monitoring Website.
6. Electrical Connections
  - a. Verify that the M820 controller power is OFF.
  - b. Connect the pH feeder connection to the appropriate peristaltic pump or other device.
  - c. Connect the ORP feeder connection to the appropriate peristaltic pump or other device. **Note: There is another connection port for ORP2.**
  - d. Method 1 (recommended): Connect the AC power cord to the load-side of the circulation pump circuit. This will only provide power to the M820 when the circulation pump is running.
  - e. Method 2: Connect the AC power cord to a GFCI power source.

- f. Connect the pH sensor connector to the corresponding lower port (labeled pH) at the right edge of the controller.
- g. Connect the ORP sensor connector to the corresponding upper port (labeled ORP) at the right edge of the controller.

#### 7. Optional connection to a Salt Chlorine Generator (SCG)

The M820 controller is capable of controlling (turning on/off) a SCG depending on the current ORP reading. This action can be accomplished through the use of a 120V or 240V relay, or by connecting the SCG to the “normally open” dry contact relay (ORP1) included with the M820 controller. Contact the factory for more information.

#### 8. Converting from Cord to Permanent Connection

- a. Remove cover.
- b. Loosen strain relief gland from AC cord.
- c. Using a 3/32” (2.44mm) slot screw driver, carefully loosen terminals that attach the AC cord to the controller box.
- d. Remove the AC cord.
- e. Replace the AC cord with a minimum jacketed cord of 18/3 AWG SW 105° 900 V, then carefully hand tighten the terminals on the strain relief gland. **Note:** For liquid tight installation connections, replace the strain relief gland with a liquid tight connector and use a minimum stranded wire gauge of 18 AWG 105° 600 V (**do not use solid conductor**) for each conductor: Black (hot), White (common), and Green (ground).

**Important:**

The minimum allowable conductor size is 18 AWG with an ampacity of 10 AMPS, and a ground fault interrupt circuit breaker of 15-20 AMPS.

Use stranded copper wire only.

### III. Operation

#### A. Startup and Shutdown

##### 1. Startup

- a. Provide power to the M820 using either Method 1 or 2 as discussed in step 6d or 6e on page 13.
- b. Turn on the filter pump and verify the water flow through the flow cell by opening the sample port valve (center) and observing a steady stream of water. The right side valve may need to be partially closed to produce a steady stream.  
**Note: Water should pass over the pH and ORP sensors for a minimum of 5 minutes to allow for accurate, stable readings of pH and ORP levels from the pool or spa. ORP readings may take longer to stabilize.**
- c. Check for leaks and repair if necessary.
- d. Manually adjust and balance the pool or spa water to acceptable ranges using a test kit. **Note(s): 1. Use a DPD based test kit to check the chlorine level. 2. Cyanuric Acid (Conditioner) levels should not exceed 30 ppm for best results.**
- e. Verify that the green Flow LED is illuminated. Both the pH and ORP dose outputs are disabled if there is no water flow.
- f. Press the Mode pushbutton momentarily to place the controller into the pH standby mode. The green pH standby LED will illuminate. Select the desired pH set level and dose time (continuous or timed).
- g. While still in the pH standby mode, press the pH Cal pushbutton to calibrate the reading to the value observed through the manual testing of the water. **Note: Always calibrate using water from the sample port of the flow cell.**

- h. Press the Mode pushbutton momentarily to place the controller in ORP1 standby mode. The yellow ORP1 standby LED will illuminate. Select the desired ORP1 set level and dose time (continuous or timed).
- i. Press the Mode pushbutton momentarily until the red Auto LED is illuminated.

## 2. Shutdown

**Note: Each time the Mode pushbutton is momentarily pressed, the mode will cycle from Auto to pH to ORP1 to ORP2, Temp, and then return to Auto mode.**

- a. Press the Mode pushbutton momentarily to place the controller in pH standby mode. The green pH standby LED will illuminate, and both the pH and ORP digital displays will show dashes.
- b. Press and hold the Mode pushbutton for 2 seconds until both the pH and ORP digital displays read OFF.
- c. Release the Mode pushbutton. The M820 controller will turn off, and the digital displays and function LEDs will go blank. The green Flow LED will be illuminated if water is flowing through the flow cell.

## B. Modes and Adjustments

### 1. Auto

- a. This is the normal operational mode of the M820 controller.
- b. The controller allows full operation and monitoring of both pH and ORP levels.
- c. No function pushbuttons are operational in this mode.
- d. The red function LED next to Auto is illuminated.
- e. pH and ORP digital displays monitor the sensor input levels.

2. pH standby

**Note: While in this mode, the green pH standby LED will illuminate, both the pH and ORP digital displays will show dashes, and all Auto functions will be disabled. When a function pushbutton is pressed, the corresponding digital display will show the function. Use the Up or Down arrow buttons to the left to increase or decrease the function value.**

a. Set Level

1. Default: 7.4 pH
2. Selectable range: 7.0 – 8.0 pH (in 0.1 increments)

b. Dose Timer

1. Default: Timed dose of 10-second pH feed relay energized and 5 minutes pH feed relay de-energized. In the timed dose cycle mode, the dose LED will flash while dosing and illuminate steadily during the delay portion of the timed cycle. In continuous dose mode, the dose LED will flash while dosing.
2. Selectable range: OFF, CON (continuous), and Timed (0.6 – 900 seconds ON and 5 minutes OFF)

c. Delay Time

1. Default: Delay time of 5 minutes between feed cycles (timed feed only). After dose time, the controller will wait (delay) for the specified minutes before checking the current level and dosing again if necessary.
2. Selectable range: 1 - 99 minutes.

d. Over Timer

1. Default: ON. The over feed timer does not automatically reset. It must be reset by pressing the Mode button to cycle through the Standby mode and back to the Auto mode.
2. The Overfeed timer is interlocked with the Dose Timer selection.





2. Selectable range: With a 0-volt sensor input, the display is adjustable from 6.1 pH to 7.9 pH.

3. ORP1 standby

**Note: While in this mode, the yellow ORP1 standby LED will illuminate, both the pH and ORP digital displays will show dashes, and all Auto functions will be disabled. Use the Up or Down arrow buttons to the left to increase or decrease the function value.**

a. Set Level

1. Default: 650 mV
2. Selectable range: 400 mV to 900 mV (in 5 mV increments)

b. Dose Timer

1. Default: 10-second ORP feed relay energized and 5 minutes ORP feed relay de-energized (timed dose timer). In the timed dose cycle mode, the dose LED will flash while dosing, and will illuminate steadily during the delay portion of the timed cycle. In continuous dose mode, the dose LED will flash while dosing.

2. Selectable range: OFF, CON (continuous), and Timed (0.6 to 900 seconds ON and 5 minutes OFF)

c. Delay Time

1. Default: Delay time of 5 minutes between feed cycles (timed feed only). After dose time, the controller will wait (delay) for the specified minutes before checking the current level and dosing again if necessary.

2. Selectable range: 1 - 99 minutes.

d. Over Timer

1. Default: ON. The over feed timer does not automatically reset. It must be reset by turning the controller off, then on.

2. The Overfeed timer is interlocked with the Dose Timer selection.

- i. If the Dose Timer is set to a timed cycle, the Over Timer will count timed feed cycles. When the preset cycle is reached, the ORP digital display will flash and the ORP1 output relay will de-energize. Default is 60 cycles.
      - Selectable range: 5 to 100 cycles
    - ii. If the Dose Timer is set to a continuous feed mode, the Over Timer will count in minutes. Default is 60 minutes.
      - Selectable range: 20 to 180 minutes
  3. When the Dose Timer is changed from either timed or continuous feed, the Over Timer is reset to Default.
  4. Turning off the Over Timer will void any NSF Certification.
- e. High Alert
  1. Default: 900 mV
  2. Selectable range: 650 mV to 900 mV, no OFF. A high alert will occur if the ORP level remains above the High Alert level for 10 continuous minutes, and will automatically turn off the High Alert when the ORP level falls below the high alert level for 1 continuous minute. During High Alert, the ORP1 dose output will be disabled.
- f. Low Alert
  1. Default: 100 mV
  2. Selectable range: OFF, 100 mV to 640 mV. A low alert will occur if the ORP level remains below the Low Alert level for 10 continuous minutes, and will automatically turn off the Low Alert when the ORP level rises above the low alert level for 1 continuous minute. During Low Alert, the ORP1 dose output will be disabled.
- g. pH Cal disabled

4. ORP2 standby

**Note: While in this mode, the yellow ORP2 standby LED will illuminate, both the pH and ORP digital displays will show dashes, and all Auto functions will be disabled. Use the Up or Down arrow buttons to the left to increase or decrease the function value.**

a. Set Level

1. Default: 640 mV
2. Selectable range: 400 mV to 890 mV (in 5 mV increments), cannot be set for less than 10 mV below the ORP1 set level.

b. Dose Timer

1. Default: OFF. In the timed dose cycle mode, the dose LED will flash while dosing and illuminate steadily during the delay portion of the timed cycle. In continuous dose mode, the dose LED will flash while dosing.
2. Selectable range: OFF, CON (continuous), and Timed (0.6 to 900 seconds ON and 5 minutes OFF)

c. Delay Time

1. Default: OFF. Delay time of 5 minutes between feed cycles (timed feed only). After dose time, the controller will wait (delay) for the specified minutes before checking the current level and dosing again if necessary.
2. Selectable range: 1 - 99 minutes.

d. Over Timer

1. Default: ON. The over feed timer does not automatically reset. It must be reset by turning the controller off, then on.
2. The Overfeed timer is interlocked with the Dose Timer selection.
  - i. If the Dose Timer is set to a timed cycle, the Over Timer will count timed feed cycles. When the preset cycle is reached, the ORP digital display will flash and

the ORP2 output relay will de-energize. Default is 60 cycles.

- Selectable range: 5 to 100 cycles

ii. If the Dose Timer is set to a continuous feed mode, the Over Timer will count in minutes. Default is 60 minutes.

- Selectable range: 20 to 180 minutes

3. When the Dose Timer is changed from either timed or continuous feed, the Over Timer is reset to Default.

4. ORP2 will not flash ORP digital display if ORP2 overfeed occurs).

5. Turning off the Over Timer will void any NSF Certification.

d. High Alert controlled by ORP1.

e. Low Alert controlled by ORP1.

f. pH Cal disabled

## 5. Temp Mode

a. Water Temperature will be displayed if the temperature sensor is installed. Display will show the water temp when Temp mode is entered and will not change while displayed.

b. Temperature can be calibrated by using the Up/Down arrow keys (+/- 10 degrees).

c. Display can be changed from Fahrenheit to Celsius by pressing the pH Cal button.

## 6. Flow

a. The controller and flow cell are shipped pre-mounted to a small (16" x 12") or large (24" x 19") ABS plastic board. The integrated flow switch is pre-wired to the controller.



Figure 4: Flow Switch Jumper



- b. The flow switch must be installed for safety reasons to prevent dosing chemicals when there is no flow in the circulation piping.
- c. Prior to installation, the controller operation can be tested by tilting the populated mounting board until the controller's green light turns on (flow switch magnet at the switch's top).

## 7. Hidden Features

a. The Up/Down buttons can be locked out to prevent unauthorized changes to the settings. There is a hidden button behind the "0" in IPS-M820 on the front overlay. Place the M820 into standby mode and then press and hold the hidden button for 2 seconds, until the display indicates "loc on" and the Up/Down keys do not operate. All other feature buttons will work to display current settings. Turn the lock off by holding the hidden button down for 2 seconds until the display indicates "loc off".

b. The M820 can be forced to manually dose pH, ORP1, or ORP2 by placing the M820 into the standby mode that is desired (pH, ORP1, ORP2), and then holding down the dose timer button and pressing the delay time button. The M820 will dose for the time set in the dose time setting (timed-feed only).

## 8. Factory defaults

To return the controller to the factory defaults, place the controller in Standby Mode. Turn off the controller by holding down the Mode pushbutton. Press and hold both the Set Level and pH Cal pushbuttons, and then press the Mode pushbutton. Both the pH and ORP displays will show "Ld". The controller will be returned to the factory default functions, and be placed in the test mode. Return the controller to full operation by again turning off the controller with the Mode pushbutton. Turn the controller on again by pressing the Mode pushbutton. **Note: Failure to complete this action will leave the controller in the test mode.**



Figure 5: Hidden button

## C. Maintenance

1. Winterizing (extended shutdowns or colder climates)
  - a. Turn off the M820 controller and shut off main power to controller.
  - b. Gently remove the pH and ORP sensors from the flow cell. Fill the provided protective caps (removed during installation) with water and re-install onto each sensor, and store in a warm, secure location. Sensor ends must remain in water for the duration of the storage time.
  - c. Drain the water from the flow cell.

### 2. Cleaning the sensor tips

**Note: It is important to keep the sensor tips clean in order to ensure accurate readings.**

- a. Sensor tips should be cleaned every 3 to 6 months for commercial pools and spas, and every 6 to 9 months for residential pools and spas. Determine the necessary frequency by comparing the readings before and after the cleaning. Identical readings mean that the cleaning time can be extended.
- b. Turn off the M820 controller.
- c. Close the right and left valves at the bottom of the flow cell.
- d. Loosen the nut fitting on the sensor and gently remove it from the flow cell.
- e. Swirl the sensor tip in a solution of liquid dish soap and water for 30 seconds and rinse with water.

- f. Swirl the sensor tip for 5 seconds in Muriatic acid or white vinegar and rinse with water. **Note: Do not touch or brush the sensor tip.**
  - g. Gently re-insert the sensor into the flow cell and hand tighten the nut fitting.
  - h. Turn on the M820 controller.
  - i. Open the flow cell valves and wait for a few minutes for the system to stabilize and get an accurate reading. Adjust the Set Level if necessary.
3. Checking the ORP sensor
- a. The ORP sensor must be checked every 6 months, or after an over-sanitization event.
  - b. Clean the sensor tip as shown in the previous section.
  - c. Place the sensor in a clean glass of tap water. The reading should show between 200mV and 400mV.
  - d. After adding a pinch of Dichlor or Trichlor into the water, the reading should show between 750mV and 800mV. **Note: if a sanitizer with high pH is used in place of Dichlor or Trichlor, the reading should show between 650mV and 750mV.**
  - e. If the sensor does not show the indicated readings, then it must be replaced.
4. Checking the pH sensor
- a. The pH sensor must be checked every 6 months, or after any incident when the pH level goes out of range.
  - b. Place the sensor in a clean glass of tap water.
  - c. Add a small amount of acid to the water and take a reading. It should show a low number.
  - d. Place the sensor into a solution that is higher than 7.5pH, and verify that the reading is increasing.
  - e. If the sensor does not show the indicated readings, then it must be replaced.

## **IV. Troubleshooting**

### **A. ORP level too low**

1. *Set level is too low:* Check ORP level with test kit and adjust as necessary
2. *Chemical feed rate too low:* Increase the feed rate.
3. *Chemical feeder is empty:* Refill the feeder.
4. *Chemical check valve/injector is clogged:* Switch acid feed tube to chlorine injector to clean.
5. *Feed pump malfunction:* Repair the feed pump.
6. *Sensor malfunction:* Replace sensor.

### **B. ORP level too high**

1. *Set level is too high:* Check ORP level with test kit and adjust as necessary.
2. *Sensor tip is dirty:* Clean according to maintenance instructions.

### **C. pH level too low**

1. *Set level is too low:* Check pH level with test kit and adjust as necessary.
2. *Chemical feed rate too high:* Lower feed rate.
3. *Chemical feeder is empty (base):* Refill the feeder.
4. *Sensor malfunction:* Replace sensor.

### **D. pH level too high**

1. *Sensor tip is dirty:* Clean according to maintenance instructions.
2. *Improper pH sensor calibration:* Adjust pH calibration.
3. *Chemical feeder is empty (base):* Refill the feeder.

4. *Feed pump malfunction:* Repair the feed pump.
5. *Chemical feed rate too low:* Increase feed rate.

### **E. pH alert LED on**

1. *Problem with acid supply:* Verify that the acid tank is not empty.
2. *Controller undershooting set level:* Increase dosing time if using a timed feed cycle, or switch to continuous feed.
3. *Manual addition:* Verify that the acid was not manually added.
4. *Controller overshooting set level:* 1) Dilute acid with water, or 2) Lower dosing time, or switch from continuous feed to timed feed.

### **F. ORP alert LED on**

1. *Problem with acid supply:* Verify that chlorine was not manually added.
2. *Controller overshooting set level:* Lower dosing time, or switch from continuous feed to timed feed.
3. *Problem with chlorine supply:* 1) Verify that the chlorine feeder is not empty, or 2) Verify that the solenoid valve on the feeder is not stuck open.
4. *Controller undershooting set level:* 1) Check for proper valve positions and leaks in chlorine lines, or 2) Increase dosing time if using timed feed, or switch to continuous feed.

### **G. Display and LEDs off**

1. *No power supply:* Check circuit breaker.

### **H. Feeder not operating**

1. *Inadequate Flow:* Check flow light and verify flow through the flow cell.
2. *Bad fuse:* Replace fuse.



**I. Flow LED off**

1. Verify that all appropriate valves are open.
2. Verify that there is sufficient pressure in the line. Close right side valve slightly if necessary.
3. Verify that the flow switch is securely connected to the controller terminals.
4. Both the pH and ORP dose outputs are disabled if the green Flow LED is not illuminated.

## **V. Warranty**

### **IPS-M820 pH/Dual ORP Controllers**

IPS Controllers warrants the IPS-M820 controller to be free of defects in materials and workmanship for a period of five (5) years from the date of installation. This warranty is limited to the repair or replacement of defective components (at our discretion) when returned to the factory within the five (5) year warranty period.

### **Other Components**

IPS Controllers warrants all other components including flow cells and flow switches for a period of one (1) year from the date of installation. Sensors will be under warranty for a period of one (1) year from the date of factory purchase. This warranty is limited to the repair or replacement of defective components (at our discretion) when returned to the factory within the one (1) year warranty period.

### **Limitation of Liability**

This Limited Warranty excludes liability for any damage during transportation, consequential damages of any kind, damages due to improper installation or improper operation, improper handling of chemicals, and the use of this product in applications for which it was not designed.

### **Claims**

All warranty claims should be directed to IPS Controllers at the contact point listed below. After receiving a Returned Merchandise Authorization (RMA) number, all product must be returned (shipping prepaid) to the factory for evaluation.





*Simply intelligent water care.*

**Factory Contact:**

26111 Ynez Road, Suite C-4, Temecula, CA 92591

phone. 877-693-6903, fax. 951-693-3224

web. [www.ipscontrollers.com](http://www.ipscontrollers.com)

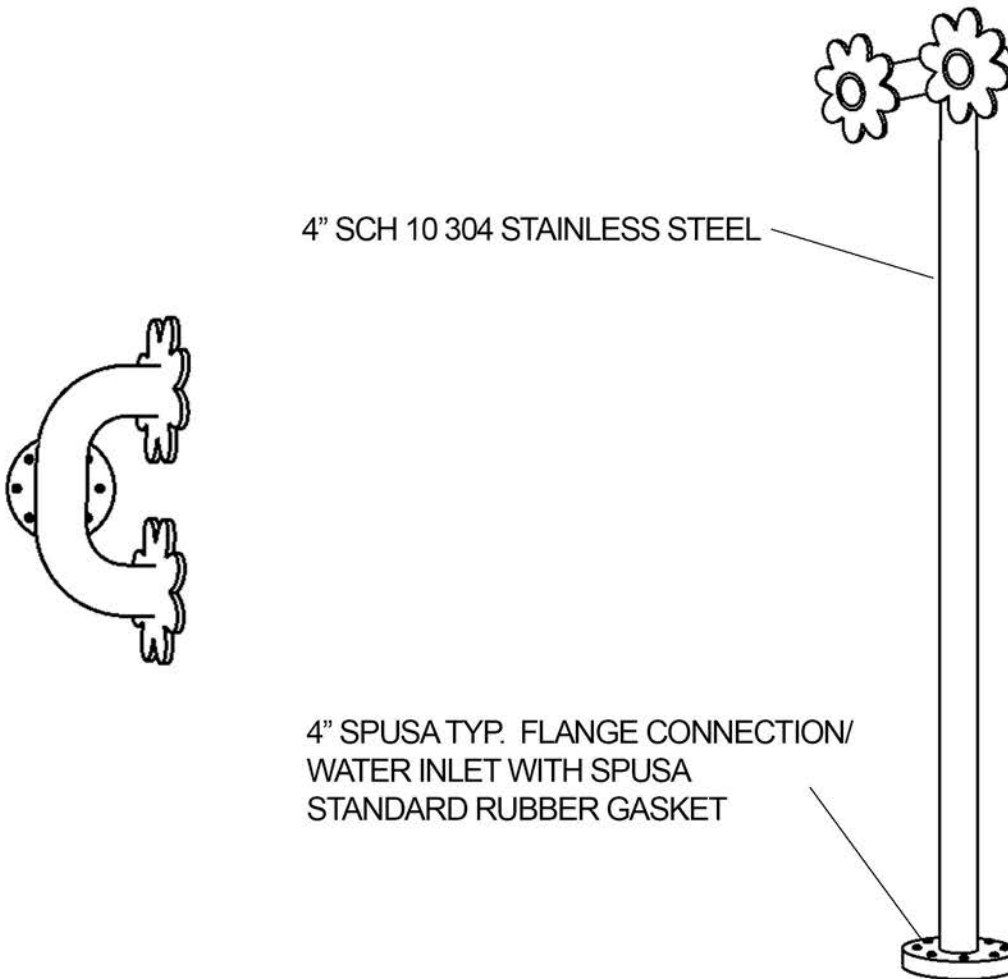
M8200M

08/14



## DUAL FLOWER SHOWER

Model Number: DF002  
Gaskets: 1/8" Gasket at connection  
Base: SB001 SPUSA Standard  
Nozzle: Machined brass / Delrin  
Flow Rate: Variable - 5 to 20 GPM





## DUAL FLOWER SHOWER

Water Effect: Two nozzles shower water from the flower-themed feature.  
Coating: Single Stage Urethane Top Coat - UV Resistant  
Color: Chosen Upon Purchase

