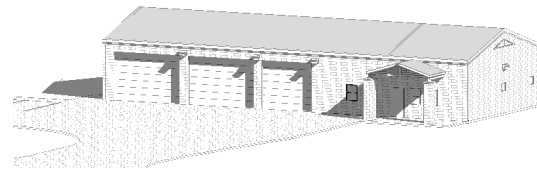


Square Foot Cost Estimate Report

Date: **12/1/2020**

Estimate Name:	WEBB COUNTY QUAD CITIES FIRE STATION RENOVATION	Revised:	12/29/2020
Building Type:	Fire Station Interior Finish-out Renovation		
Location:	LAREDO, TX		
Story Count:	1		
Story Height (L.F.):	14.00		
Floor Area (S.F.):	421		
Labor Type:	OPN		
Basement Included:	No		
Data Release:	Year 2020 Quarter 4		
Cost Per Square Foot:	\$305.23		
Renovation Cost:	\$128,501.54		



Costs are derived from a building model with basic components.
Scope differences and market conditions can cause costs to vary significantly.

		% of Total	Cost Per S.F.	Cost
A	Substructure	0.00%	\$0.00	\$0.00
A1010	Standard Foundations		\$7.72	\$0.00
A10101051560	Foundation wall, CIP, 4' wall height, direct chute, .148 CY/LF, 7.2 PLF, 12" thick		\$4.75	
A10101102500	Strip footing, concrete, reinforced, load 5.1 KLF, soil bearing capacity 3 KSF, 12" deep x 24" wide		\$2.70	
A10102107200	Spread footings, 3000 PSI concrete, load 50K, soil bearing capacity 6 KSF, 3' - 0" square x 12" deep		\$0.27	
A1030	Slab on Grade		\$5.66	\$0.00
A10301203400	Slab on grade, 5" thick, light industrial, reinforced		\$5.66	
A2010	Basement Excavation		\$0.35	\$0.00
A20101103380	Excavate and fill, 4000 SF, 4' deep, sand, gravel, or common earth, on site storage		\$0.35	
B	Shell	9.02%	\$22.95	\$9,661.95
B1020	Roof Construction		\$7.61	\$0.00
B10201084600	Roof, steel joists, beams, 1.5" 22 ga metal deck, on columns and bearing wall, 30'x30' bay, 28" deep, 40 PSF superimposed load, 62 PSF total load		\$7.12	
B10201084700	Roof, steel joists, beams, 1.5" 22 ga metal deck, on columns and bearing wall, 30'x30' bay, 28" deep, 40 PSF superimposed load, 62 PSF total load. add for column		\$0.49	
B2010	Exterior Walls		\$20.50	\$8,630.50
B20101155440	Exterior Wall Paint & Interior Re-Paint		\$15.00	\$6,315.00
	Concrete block (CMU) wall, split rib, 8 ribs, hollow, regular weight, 8x8x16, reinforced, vertical #5@32", grouted		\$5.50	\$2,315.50
B2020	Exterior Windows		\$2.45	\$1,031.45
B20201066900	Windows, aluminum, sliding, insulated glass, 8' x 4'		\$2.45	\$1,031.45
B2030	Exterior Doors		\$5.85	\$0.00
B20301106350	Door, aluminum & glass, without transom, narrow stile, double door, hardware, 6'-0" x 7'-0" opening		\$0.80	
B20302203450	Door, steel 18 gauge, hollow metal, 1 door with frame, no label, 3'-0" x 7'-0" opening		\$1.21	
B20302204650	Door, steel 24 gauge, overhead, sectional, electric operator, 12'-0" x 12'-0" opening		\$3.84	
B3010	Roof Coverings		\$6.98	\$0.00
B30101051400	Roofing, asphalt flood coat, gravel, base sheet, 3 plies 15# asphalt felt, mopped		\$2.30	
B30103203090	Insulation, rigid, roof deck, composite with 2" EPS, 1" perlite		\$1.78	
B30104201400	Roof edges, aluminum, duranodic, .050" thick, 6" face		\$1.80	
B30104300040	Flashing, aluminum, no backing sides, .019"		\$0.30	
B30106305100	Gravel stop, aluminum, extruded, 4", mill finish, .050" thick		\$0.80	
B3020	Roof Openings		\$0.19	\$0.00

B30201105700	Skylight, plastic domes, insulated curbs, 30 SF to 65 SF, single glazing		\$0.01	
B30202100300	Roof hatch, with curb, 1" fiberglass insulation, 2'-6" x 3'-0", galvanized steel, 165 lbs		\$0.18	
C	Interiors	14.28%	\$36.87	\$15,289.78
C1010	Partitions		\$4.25	\$1,789.25
C10101045500	Concrete block (CMU) partition, light weight, hollow, 6" thick, no finish		\$4.25	\$1,789.25
C1020	Interior Doors		\$6.64	\$2,794.50
	Door Hardware replacement		\$2.14	\$900.00
C10201022600	Door, single leaf, kd steel frame, hollow metal, commercial quality, flush, 3'-0" x 7'-0" x 1-3/8"		\$4.50	\$1,894.50
C1030	Fittings		\$0.44	\$0.00
C10301100460	Toilet partitions, cubicles, ceiling hung, stainless steel		\$0.44	
C3010	Wall Finishes		\$2.13	\$896.73
C30102202050	Glazed coating		\$1.50	\$631.50
C30102300200	Painting, woodwork including puttying, brushwork, primer & 3 coats		\$0.63	\$265.23
C3020	Floor Finishes		\$13.35	\$5,388.80
C30204100930	Concrete topping		\$2.00	\$842.00
C30204100930	Concrete topping, paint		\$0.55	
C30204101600	Vinyl composition tile and slab leveling (Includes additional flooring replacement)		\$10.80	\$4,546.80
C3030	Ceiling Finishes		\$4.50	\$1,894.50
C30302107400	Acoustic ceilings, 3/4" mineral fiber, 12" x 12" tile, concealed 2" bar & channel grid, suspended support		\$4.50	\$1,894.50
	Casework		\$6.00	\$2,526.00
	Existing Casework Repairs		\$6.00	\$2,526.00
D	Services	13.30%	\$33.84	\$14,246.64
D2010	Plumbing Fixtures		\$10.06	\$0.00
D20101102080	Water closet, vitreous china, bowl only with flush valve, wall hung		\$2.72	
D20102102000	Urinal, vitreous china, wall hung		\$0.32	
D20103101560	Lavatory w/trim, vanity top, PE on CI, 20" x 18"		\$0.86	
D20104101960	Kitchen sink w/trim, countertop, stainless steel, 33" x 22" double bowl		\$0.56	
D20104201960	Laundry sink w/trim, molded stone, on wall, 45"x 21" double compartment		\$0.35	
D20104404340	Service sink w/trim, PE on CI, wall hung w/rim guard, 24" x 20"		\$0.97	
D20107101680	Shower, stall, baked enamel, terrazzo receptor, 36" square		\$3.76	
D20108201920	Water cooler, electric, wall hung, wheelchair type, 7.5 GPH		\$0.52	
D2020	Domestic Water Distribution		\$6.73	\$0.00
D20202501900	Gas fired water heater, commercial, 100< F rise, 115 MBH input, 110 GPH		\$6.73	
D2040	Rain Water Drainage		\$2.40	\$0.00
D20402104200	Roof drain, CI, soil, single hub, 4" diam, 10' high		\$1.87	
D20402104240	Roof drain, CI, soil, single hub, 4" diam, for each additional foot add		\$0.53	
D3050	Terminal & Package Units		\$20.84	\$8,773.64
D30501553840	multizone, air conditioner, offices		\$20.84	\$8,773.64
D4010	Sprinklers		\$4.07	\$0.00
D40104100600	Wet pipe sprinkler systems, steel, light hazard, 1 floor, 5000 SF		\$4.07	
D4020	Standpipes		\$1.45	\$0.00
D40203101540	Wet standpipe risers, class III, steel, black, sch 40, 4" diam pipe, 1 floor		\$1.45	
D5010	Electrical Service/Distribution		\$7.00	\$2,947.00
D50101200280	Overhead service installation, includes breakers, metering, 20' conduit & wire, 3 phase, 4 wire, 120/208 V, 200 A		\$1.25	\$526.25
D50102300280	Feeder installation 600 V, including RGS conduit and XHHW wire, 200 A		\$1.50	\$631.50

D50102400200	Switchgear installation, incl switchboard, panels & circuit breaker, 120/208 V, 3 phase, 400 A		\$4.25	\$1,789.25
D5020	Lighting and Branch Wiring		\$6.00	\$2,526.00
D50201100200	Receptacles incl plate, box, conduit, wire, 2.5 per 1000 SF, .3 watts per SF		\$1.75	\$736.75
D50201350280	Miscellaneous power, 1 watt		\$0.25	\$105.25
D50201400280	Central air conditioning power, 4 watts		\$0.75	\$315.75
D50202100500	Fluorescent fixtures recess mounted in ceiling, 0.8 watt per SF, 20 FC, 5 fixtures @32 watt per 1000 SF		\$3.25	\$1,368.25
D5030	Communications and Security		\$1.71	\$0.00
D50309100452	Communication and alarm systems, fire detection, addressable, 25 detectors, includes outlets, boxes, conduit and wire		\$0.75	
D50309100460	Fire alarm command center, addressable without voice, excl. wire & conduit		\$0.96	
E	Equipment & Furnishings	0.49%	\$1.25	\$526.25
E1090	Other Equipment		\$1.25	\$526.25
	Window Treatment		\$1.25	\$526.25
E1090113013151250	1.00-Microwave ovens, residential appliances, minimum		\$0.08	
E1090113013150020	1.00-Cooking range, residential appliances, free standing, 1 oven, 30" wide, minimum		\$0.18	
E1090113013150350	1.00-Oven, residential appliances, built-in, 30" wide, minimum		\$0.32	
E1090113013165800	1.00-Refrigerator, residential appliances, no frost, 14 to 16 C.F., maximum		\$0.39	
F	Special Construction	0.00%	\$160.00	\$67,360.00
	Water Systems		\$160.00	\$67,360.00
	Water storage, hydro-pneumatic & treatment system		\$160.00	\$67,360.00
G	Building Sitework	0.00%	\$0.00	\$0.00
SubTotal		100%	\$254.91	\$107,084.62
Contractor Fees (General Conditions,Overhead,Profit)		20.00%	\$50.98	\$21,416.92
User Fees		0.0 %	\$0.00	\$0.00
Total Building Cost			\$305.89	\$128,501.54

* Indicates Assemblies or Components have been customized.