

STATE OF TEXAS §

COUNTY OF WEBB §

**RESOLUTION
WEBB COUNTY COMMISSIONERS COURT**

A RESOLUTION OF THE WEBB COUNTY COMMISSIONERS COURT DECLARING THAT BECERRA ROAD IS A COUNTY ROAD THAT EXTENDS FOR TWO MILES. THE BECERRA CREEK BRIDGE, ON BECERRA ROAD, NATIONAL BRIDGE INVENTORY (NBI) STRUCTURE NUMBER 222400AA0112010, LOCAL DESIGNATION NUMBER BR, IS LOCATED ON PRIVATE PROPERTY AND THERE IS A GATE THAT RESTRICTS ACCESS TO THE BRIDGE. BECERRA CREEK BRIDGE IS NOT LOCATED ON THE TWO MILES OF COUNTY ROAD.

WHEREAS, it is deemed expedient that Webb County maintain and improve county roads and bridges.

NOW, THEREFORE, BE IT RESOLVED by the County Commissioners Court of Webb County, Texas:

That the Becerra Webb County Road extends for two miles and that the Becerra Creek Bridge, on Becerra Road, National Bridge Inventory, (NBI) Structure number 222400AA0112010, Local Designation number BR is located on private property. Becerra Creek Bridge on Becerra Road is not part of the Webb County Road System.

RESOLVED AND ORDERED this 26th day of January, 2015



**The Honorable Frank Sciaraffa
Webb County Commissioner Pct. 1**



**The Honorable Rosaura "Wawi" Tijerina
Webb County Commissioner Pct. 2**

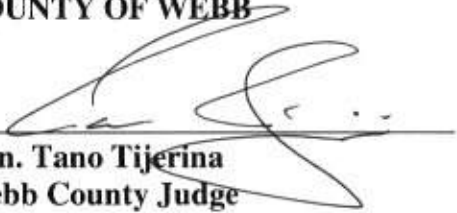


**The Honorable John Galo
Webb County Commissioner Pct. 3**




**The Honorable Jaime Canales
Webb County Commissioner Pct. 4**

COUNTY OF WEBB



Hon. Tano Tijerina
Webb County Judge


ATTEST:



Margie Ramirez Ibarra
Webb County Clerk



APPROVED AS TO FORM:



Marco Montemayor
Webb County Attorney

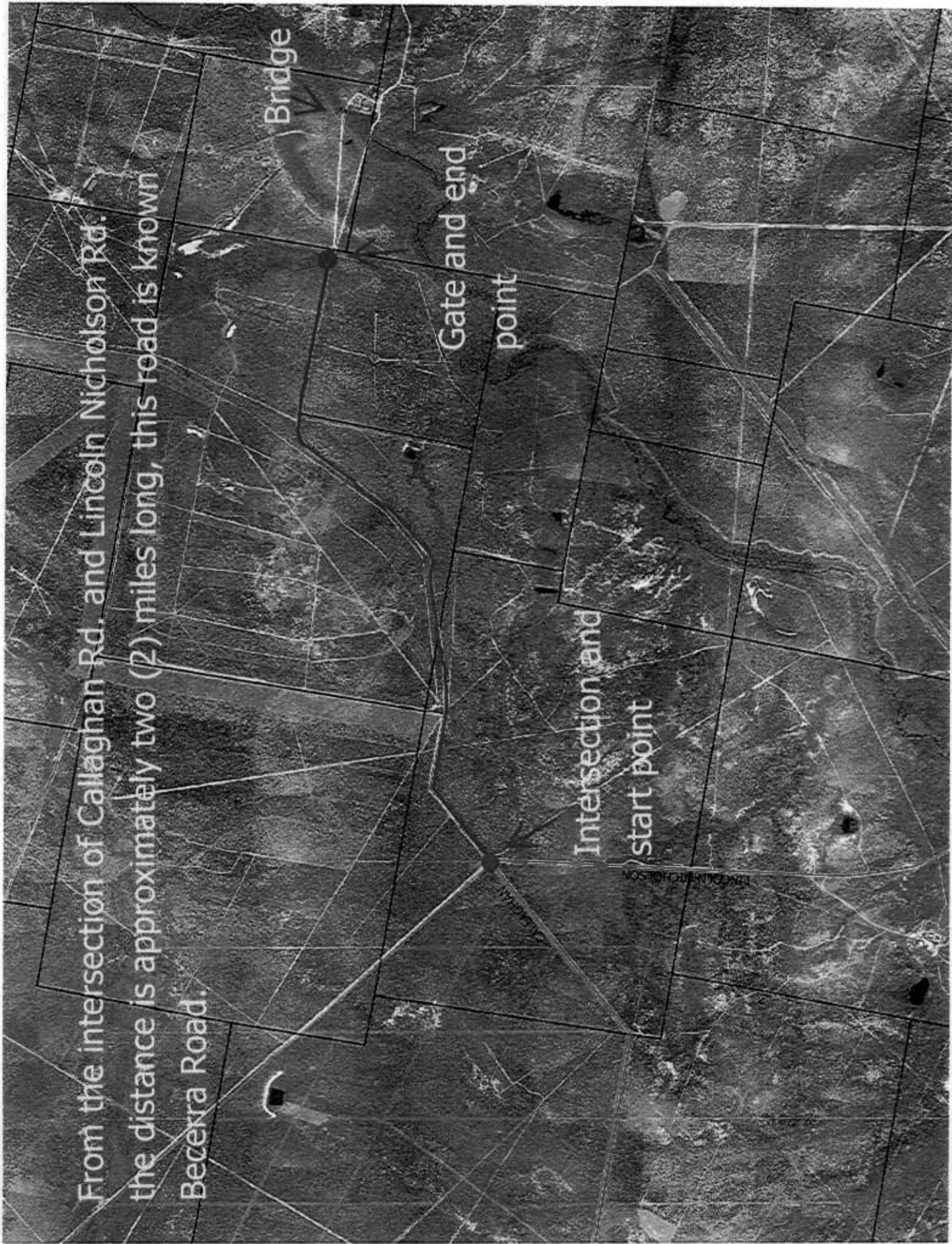
*By law, the county attorney's office may only advise or approve contracts or legal documents on behalf of its clients. It may not advise or approve a contract or legal document on behalf of other parties. Our review of this document was conducted solely from the legal perspective of our client. Our approval of this document was offered solely for the benefit of our client. Other parties should not rely on this approval, and should seek review and approval of their own respective attorney(s).

From the intersection of Callaghan Rd. and Lincoln Nicholson Rd. the distance is approximately two (2) miles long, this road is known as Becerra Road.

Bridge

Gate and end point

Intersection and start point



From the intersection of Callaghan Rd. and Lincoln Nicholson Rd. the distance is approximately two (2) miles long, this road is known as Becerra Road.

Bridge

Gate and end point

Intersection and start point

