

MPO RESOLUTION 2016-16

**Laredo Urban Transportation Study
Metropolitan Planning Organization Policy Committee**

**REQUESTING THE TEXAS TRANSPORTATION COMMISSION
ALLOCATE ADDITIONAL FUNDS, INCLUDING BUT NOT LIMITED
TO DISCRETIONARY FUNDING, TO THE LAREDO URBAN
TRANSPORTATION STUDY METROPOLITAN PLANNING
ORGANIZATION AND TO THE TEXAS DEPARTMENT OF
TRANSPORTATION LAREDO DISTRICT TO COMPLETE MOBILITY
PROJECTS WITHIN THE LAREDO MPO BOUNDARY**

WHEREAS, the Laredo Urban Transportation Study Metropolitan Planning Organization (hereinafter referred to as the "Laredo MPO") is charged with coordinating and programming funding for on and off system road projects;

WHEREAS, the Laredo MPO has identified projects for which insufficient, if any, funding is available;

WHEREAS, Laredo plays an important role in facilitating trade between Texas and the United States and Mexico and Central and South America;

WHEREAS, the border is an economic engine that the state and nation rely on;

WHEREAS, Laredo is much smaller both in area and in population than Houston, Dallas, Austin, San Antonio or El Paso yet it represents greater international trade than any single one of them;

WHEREAS, Laredo's total trade, total exports and total imports, grew more than any other U.S. Customs District in 2014;

WHEREAS, it is anticipated that Laredo's trade numbers will continue to grow;

WHEREAS, the City of Laredo's four international bridges account for \$199,144,135,540 of the \$280 billion dollars in trade flowing through the Laredo Customs District and 66% of all commercial trucks crossing between Mexico and the U.S.;

WHEREAS, the Laredo Custom's District is 3rd in the nation surpassed only by Los Angeles and New York;

WHEREAS, an average of 14,000 commercial vehicles cross Laredo's International Bridge system daily;

WHEREAS, the City of Laredo has 22 trains traveling over 81 public at grade crossings and through its downtown daily, continually and impeding emergency, commercial and passenger traffic;

WHEREAS, the large volume of traffic passing over Laredo's International Bridges places a tremendous strain on the area's transportation infrastructure making it imperative that the infrastructure around this port remain in peak condition to ensure our economy keeps moving forward;

WHEREAS, the Laredo MPO, in conjunction with its planning partners, has developed a number of mobility projects which would resolve many of the area's transportation problems;

WHEREAS, using current anticipated funding, both state and federal, the majority of these projects will not be built for decades;

WHEREAS, given the importance of Laredo as an economic conduit for the State of Texas and the nation additional funding is warranted.

NOW THEREFORE BE IT RESOLVED BY THE LAREDO MPO POLICY COMMITTEE THAT:

Section 1: The Laredo MPO Policy Committee petitions the Texas Transportation Commission to allocate additional funds, including but not limited to discretionary funding, to the Laredo Urban Transportation Study Metropolitan Planning Organization and to the Texas Department of Transportation Laredo District to complete mobility projects within the Laredo MPO boundary.

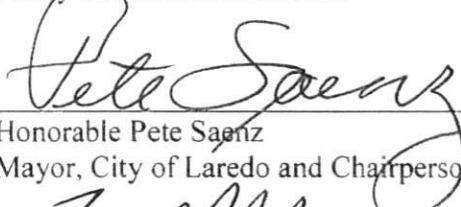
Section 2: The Laredo MPO has identified the following projects which will alleviate freight mobility congestion and connectivity inefficiencies plaguing the Laredo Metropolitan area:

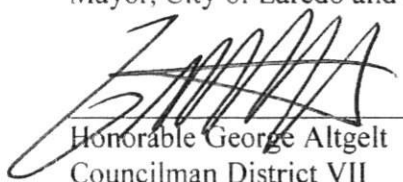
- **US 59/Loop 20/Future I 69W corridor** from International Blvd. to US 59 Business - expansion to interstate highway standards.
- **Hachar-Reuthinger Parkway/Highway** from Mines road to intersection with IH-35 (at approx. mile marker 15)
- **Additional Exit Booths at World Trade Bridge with a "Weigh-in Motion" System**
- **Fast Lane at World Trade Bridge**
- **Improvements to FM 1472**
- **Develop/Improve Relief Route to Mines Road**
 - **Vallecillo Road – New capacity roadway.**
 - Sara Road – widen existing roadway and realign southern end of Sara Rd. to relieve FM1472 (Mines Road) congestion.


- **IH-35 grade separation at Beltway/Uniroyal** (mile marker 13) Bridge replacement and underpass widening
- **Widen IH 35 to six lanes from Shiloh to U.S. Customs and Border Protection checkpoint**
- **Springfield Road completion** – relief route for congestion on McPherson Rd.

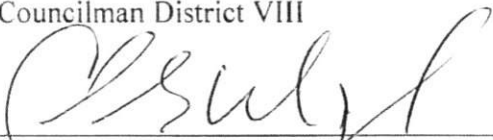
Section 3: This resolution be sent to the Texas Transportation Commission; the Executive Director of the Texas Transportation Commission; the Honorable Henry Cuellar, U.S. Congressman, 28th District of Texas; the Honorable Judith Zaffirini, State Senator, 21st Senatorial District; the Honorable Richard Peña Raymond, State Representative, District 42; the Honorable Tracy O. King, State Representative, District 80.


Policy Committee Members:


 Honorable Pete Saenz
 Mayor, City of Laredo and Chairperson



 Honorable George Altgelt
 Councilman District VII

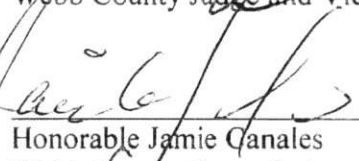

 Honorable Roberto Balli
 Councilman District VIII



 Honorable Charlie San Miguel
 Councilman District VI



 Pedro R. Alvarez, P.E.,
 Laredo District Engineer, TxDOT

Policy Committee Members:

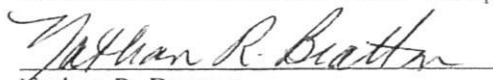

 Honorable Tano E. Tijerina
 Webb County Judge and Vice- Chairperson


 Honorable Jamie Canales
 Webb County Commissioner Precinct 4

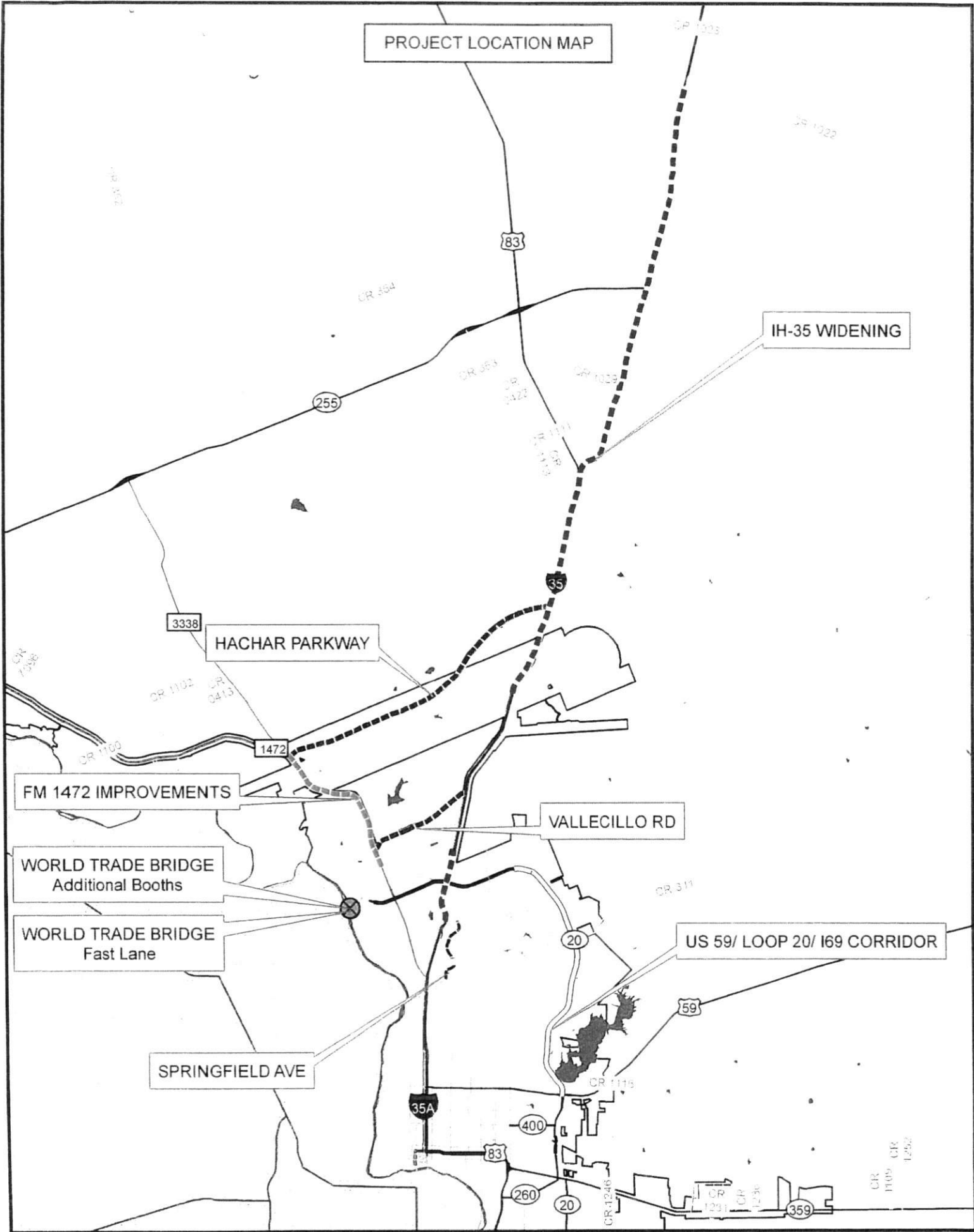

 Honorable John Galo
 Webb County Commissioner Precinct 3


 Melisa D. Montemayor
 Laredo District Administrator, TxDOT

I certify that the above resolution was adopted on May 27, 2016 at a public meeting of the Policy Committee of the Laredo Urban Transportation Study MPO.


 Nathan R. Bratton
 MPO Director

PROJECT LOCATION MAP



IH-35 WIDENING

HACHAR PARKWAY

FM 1472 IMPROVEMENTS

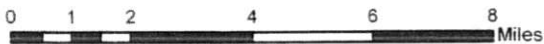
VALLECILLO RD

WORLD TRADE BRIDGE
Additional Booths

WORLD TRADE BRIDGE
Fast Lane

SPRINGFIELD AVE

US 59/ LOOP 20/ I69 CORRIDOR



Above Grade Crossings Proposed on Loop 20/IH 69 W Corridor and Widening to Interstate Standard

Del Mar and Loop 20 (Not Funded)

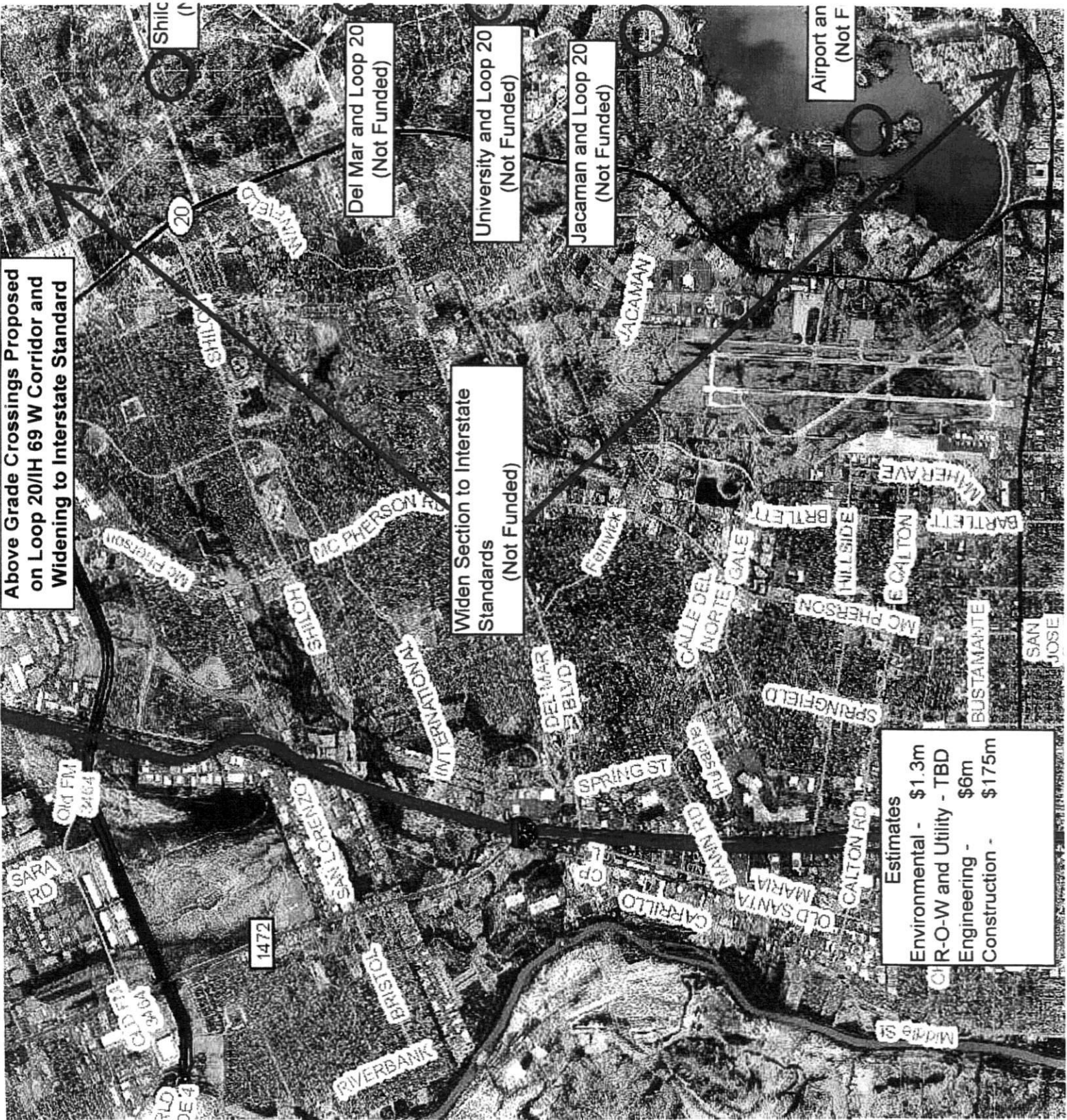
University and Loop 20 (Not Funded)

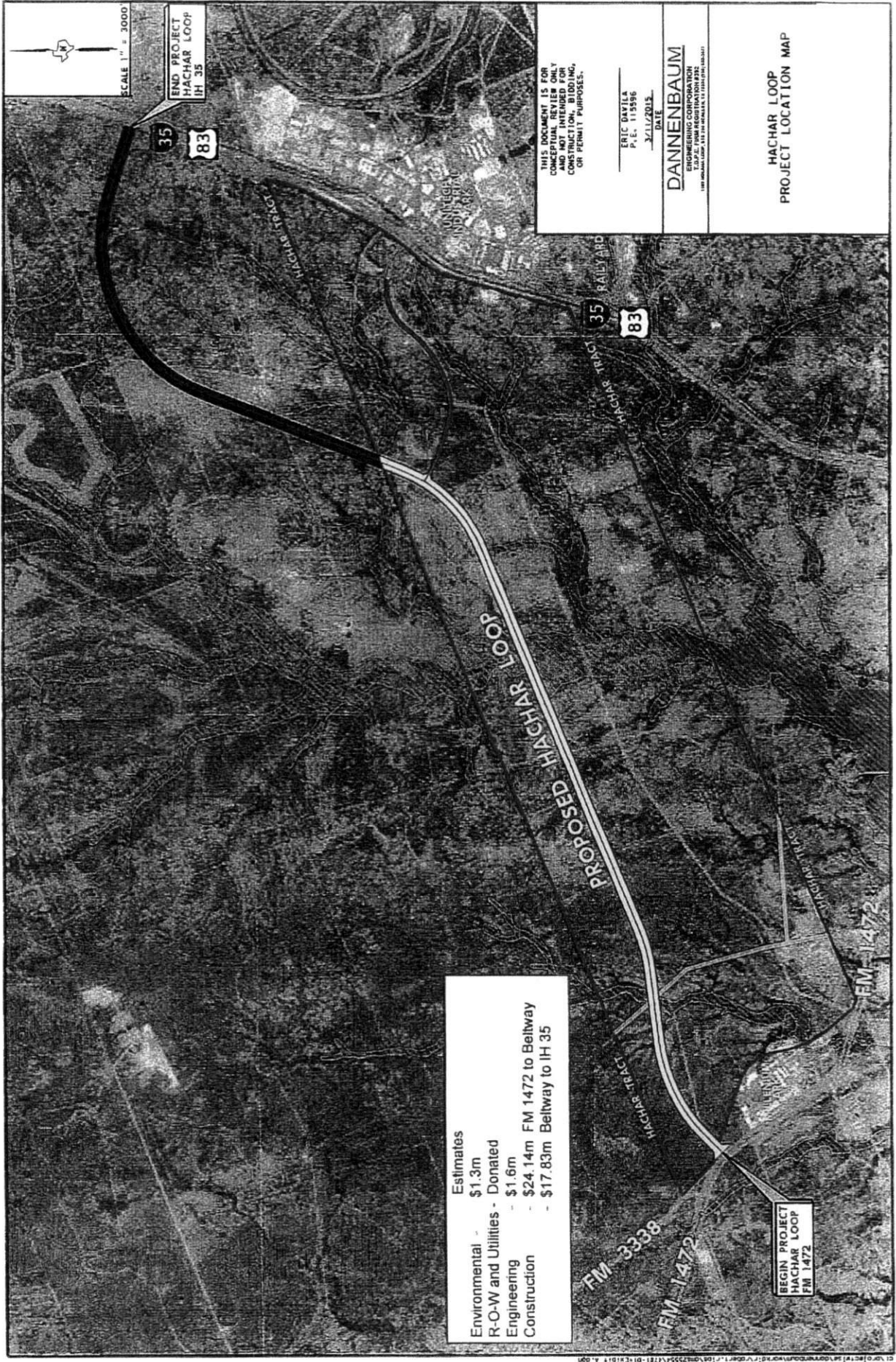
Jacaman and Loop 20 (Not Funded)

Airport an (Not F

Widen Section to Interstate Standards (Not Funded)

Estimates	
Environmental -	\$1.3m
R-O-W and Utility -	TBD
Engineering -	\$6m
Construction -	\$175m





SCALE 1" = 3000'

END PROJECT
HACHAR LOOP
IH 35

THIS DOCUMENT IS FOR
CONSTRUCTION, BIDDING,
AND NOT INTENDED FOR
OR PERMIT PURPOSES.

ERIC BASTIS
P.E. 115586
3/27/2012

DANNENBAUM
ENGINEERING CORPORATION
1000 W. UNIVERSITY BLVD. SUITE 100
DALLAS, TEXAS 75241

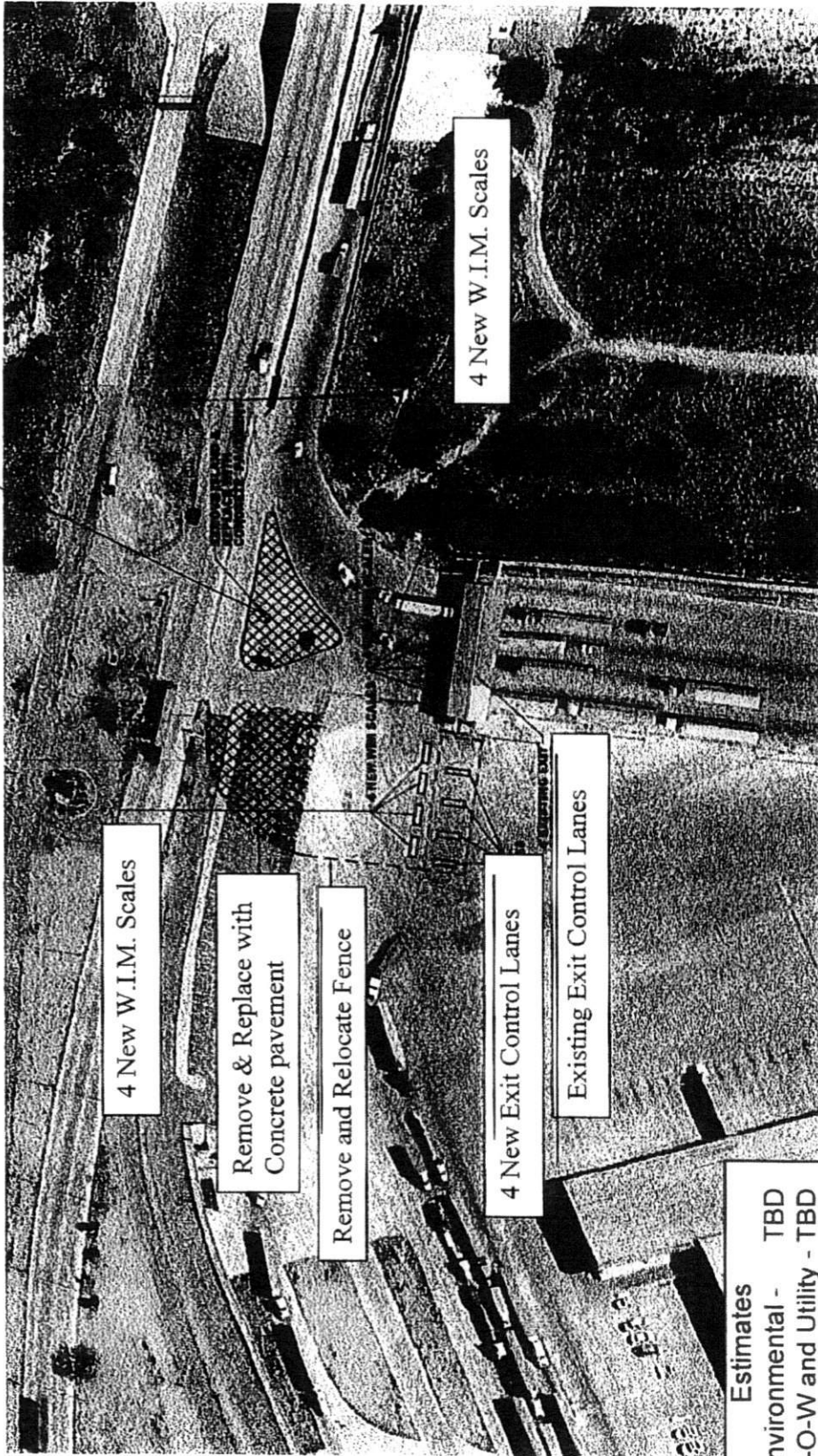
HACHAR LOOP
PROJECT LOCATION MAP

Estimates
 Environmental - \$1.3m
 R-O-W and Utilities - Donated
 Engineering - \$1.6m
 Construction - \$24.14m FM 1472 to Beltway
 - \$17.83m Beltway to IH 35

BEGIN PROJECT
HACHAR LOOP
FM 1472

Additional Exit Booths at World Trade Bridge with "Weigh-in-Motion" System

Remove Island & Replace with Concrete Pavement



Estimates	TBD
Environmental -	TBD
R-O-W and Utility -	TBD
Engineering -	TBD
Construction	- \$8m

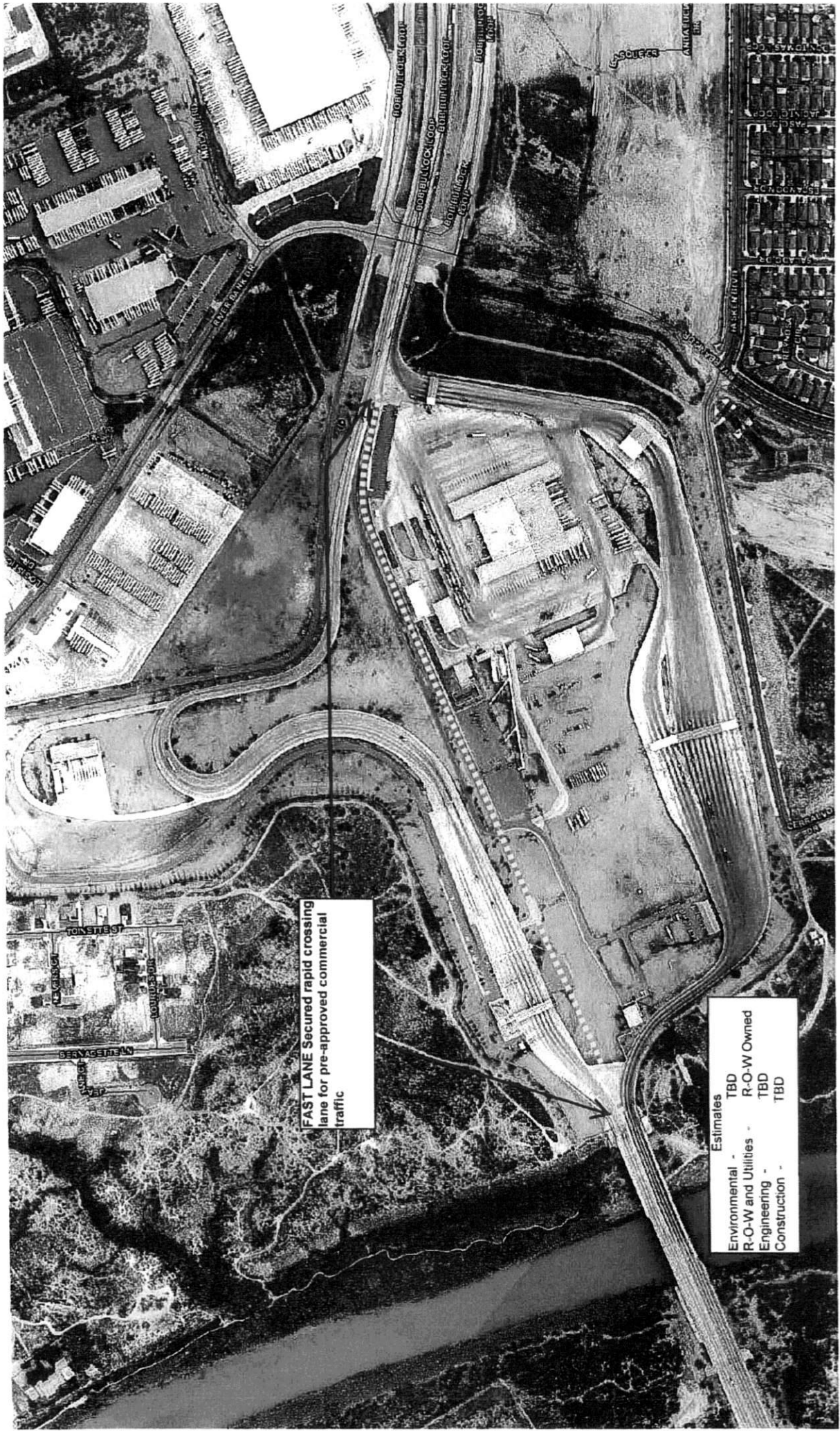


STRUCTURAL ENGINEERING
ASSOCIATES, INC.
CONSULTING ENGINEERS

SAN ANTONIO, TEXAS



CITY OF LAREDO



FAST LANE Secured rapid crossing lane for pre-approved commercial traffic

- Estimates**
- Environmental - TBD
 - R-O-W and Utilities - R-O-W Owned
 - Engineering - TBD
 - Construction - TBD

Vallecillo Road

Vallecillo

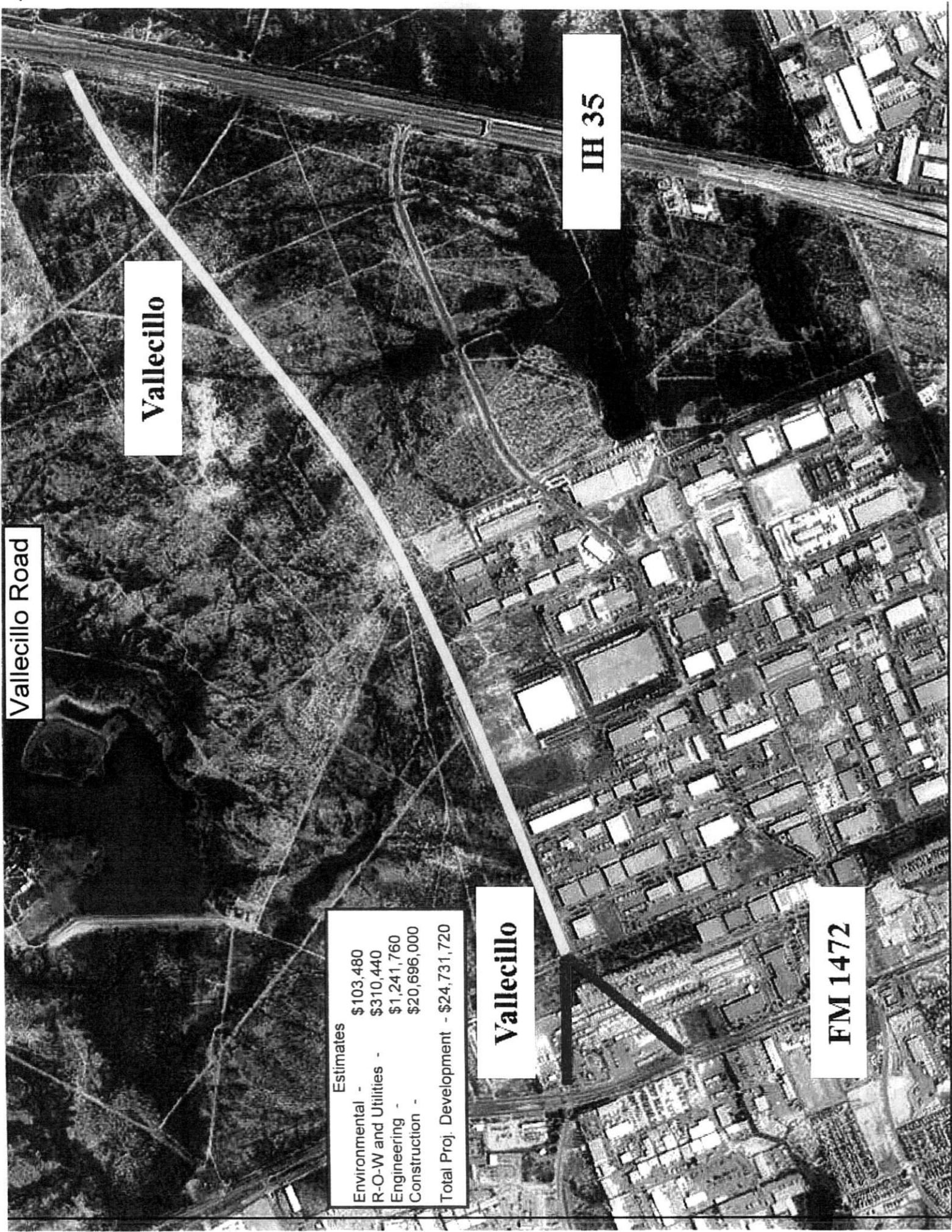
IH 35

Estimates

Environmental -	\$103,480
R-O-W and Utilities -	\$310,440
Engineering -	\$1,241,760
Construction -	\$20,696,000
Total Proj. Development -	\$24,731,720

Vallecillo

FM 1472



IH35 Grade Separation at Beltway/Uniroyal



Estimates
Environmental - TBD
R-O-W and Utilities - TBD
Engineering - TBD
Construction - TBD



Springfield Road Completion

Estimates
Environmental - TBD
R-O-W and Utilities - TBD
Engineering - TBD
Construction - TBD