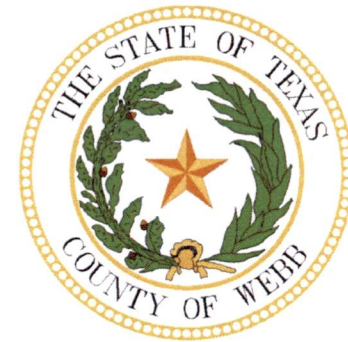




WEBB COUNTY FAIRGROUNDS ARENA



Commissioners Court Meeting
Schematic Design Review
October 11, 2022



Commissioners Court Review Comments

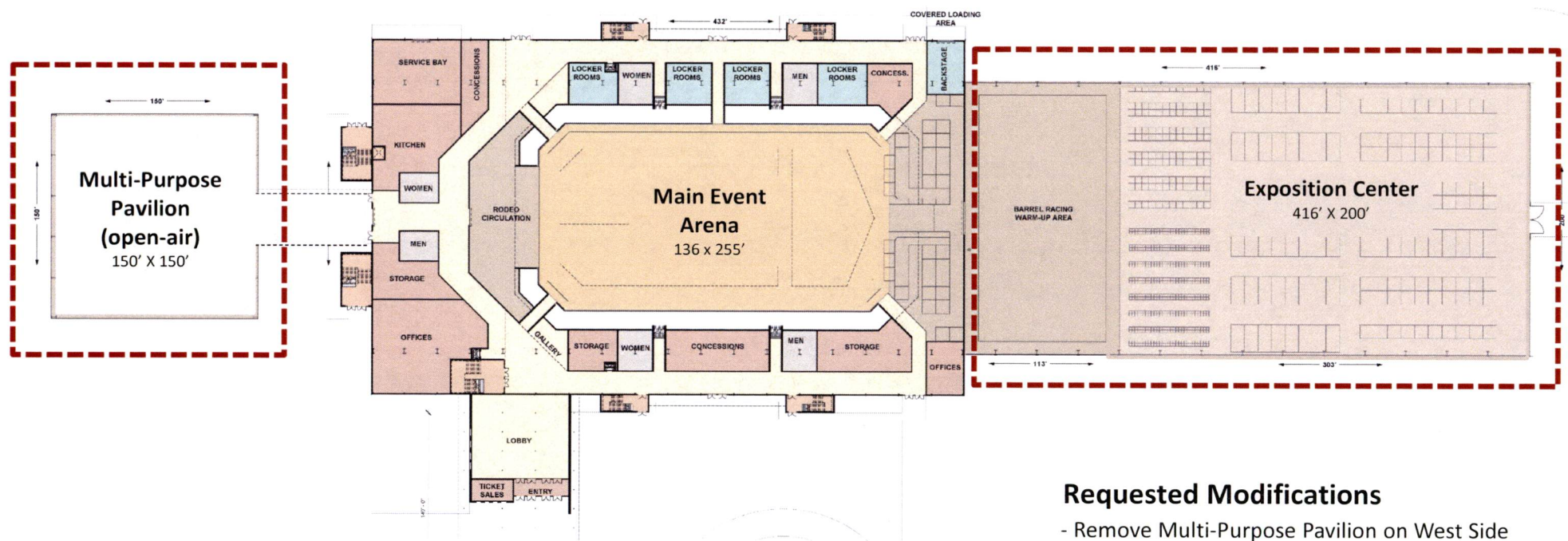
08.22.22

Recap

- Remove Multi-Purpose Pavilion on West Side
- Seating Option 2A selected; (8) 42" rows with cross aisle, 22" seat width
- Arena Floor, & Expo Center (Dirt over concrete for Multi-purpose use)
- Enlarged Secondary Arena (with Dirt Floor)
- Options with Secondary Arena and Expo Hall on the East Side
- Banquet Hall access to seating and Balcony Area

Webb County Webb County Fairgrounds Arena

Scheme 2 - Presented 8.22.22

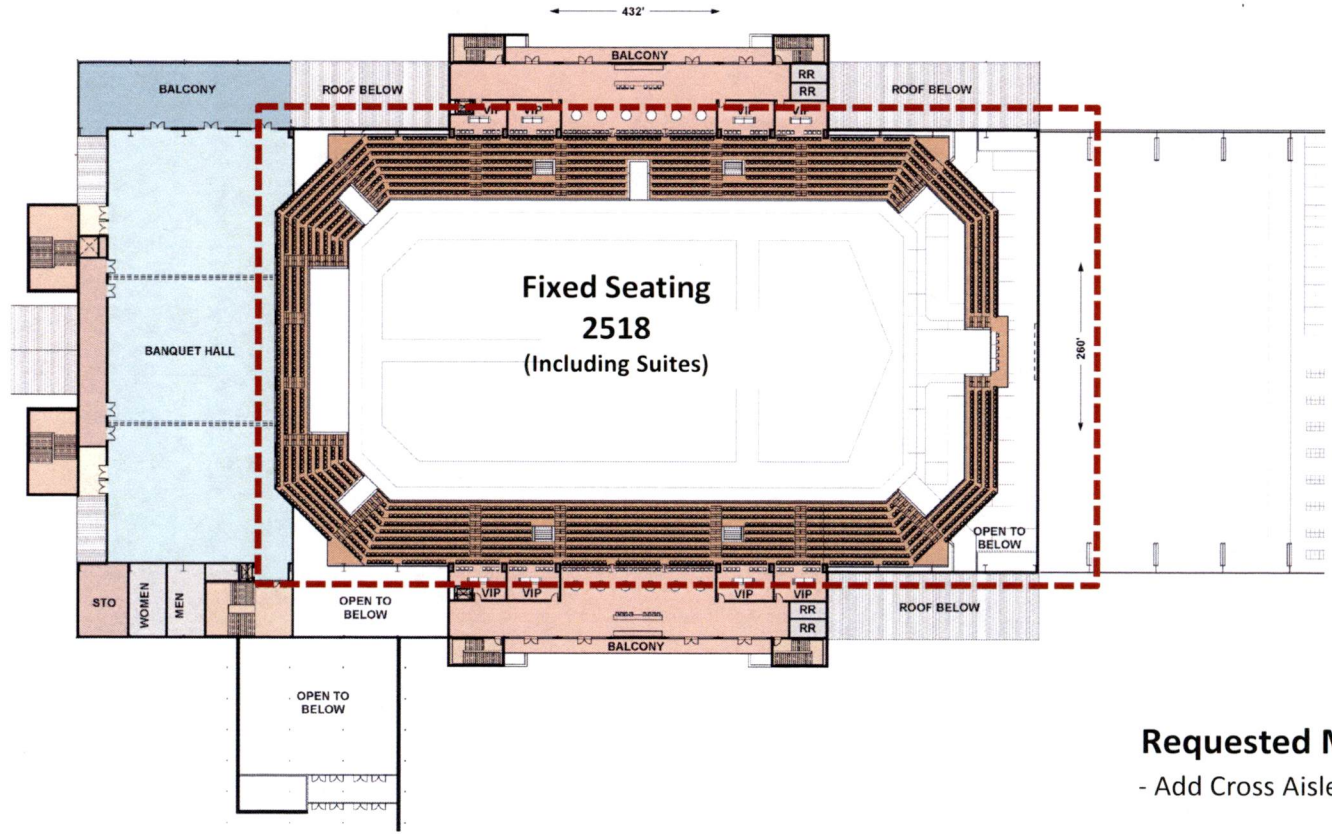


Requested Modifications

- Remove Multi-Purpose Pavilion on West Side
- Exhibition Hall Options
- Enlarged Secondary Arena

Webb County Webb County Fairgrounds Arena

Scheme 2 - Presented 8.22.22



Requested Modifications
- Add Cross Aisles, (8) 42" rows, 22" Seating

Schematic Update

Arena Features Overview

Arena Performance Floor

Multi-Use Dirt Over Concrete
Rodeo /Animal Events on Portable Dirt
Banquet /Sports /Concert /Exhibitions
on Concrete
2 Rodeo Entry Points
Generous Setup Storage

Fixed Seating

Seats With Backs
Generous Seat Row Width
ADA Seats
Cup Holders

Entry Lobby

Ticket Booths/ Will Call
Exhibition Gallery
Monumental Stairs to Banquet Hall

Suites / Club Level

Private Rentable VIP Suites
Club Level Lounge
Catered Service
Balcony with Lake View

Concourse

Concessions /Fan Zone
Wired for Exhibitor Booths
Restrooms

Rodeo + Show Support

Enclosed + Covered Stock Pens
2 Back of House Staging Areas
Floor Loading Access

Locker / Dressing Rooms

Main Rodeo & Tournament
Locker Rooms
Training /First Aid Rooms
Green Room /Dressing Area

Banquet Hall

Approx. 1000 Seated at Tables
3 Flexible Partitioned Sections
Party Deck with View of Lake
Direct View of Arena Events

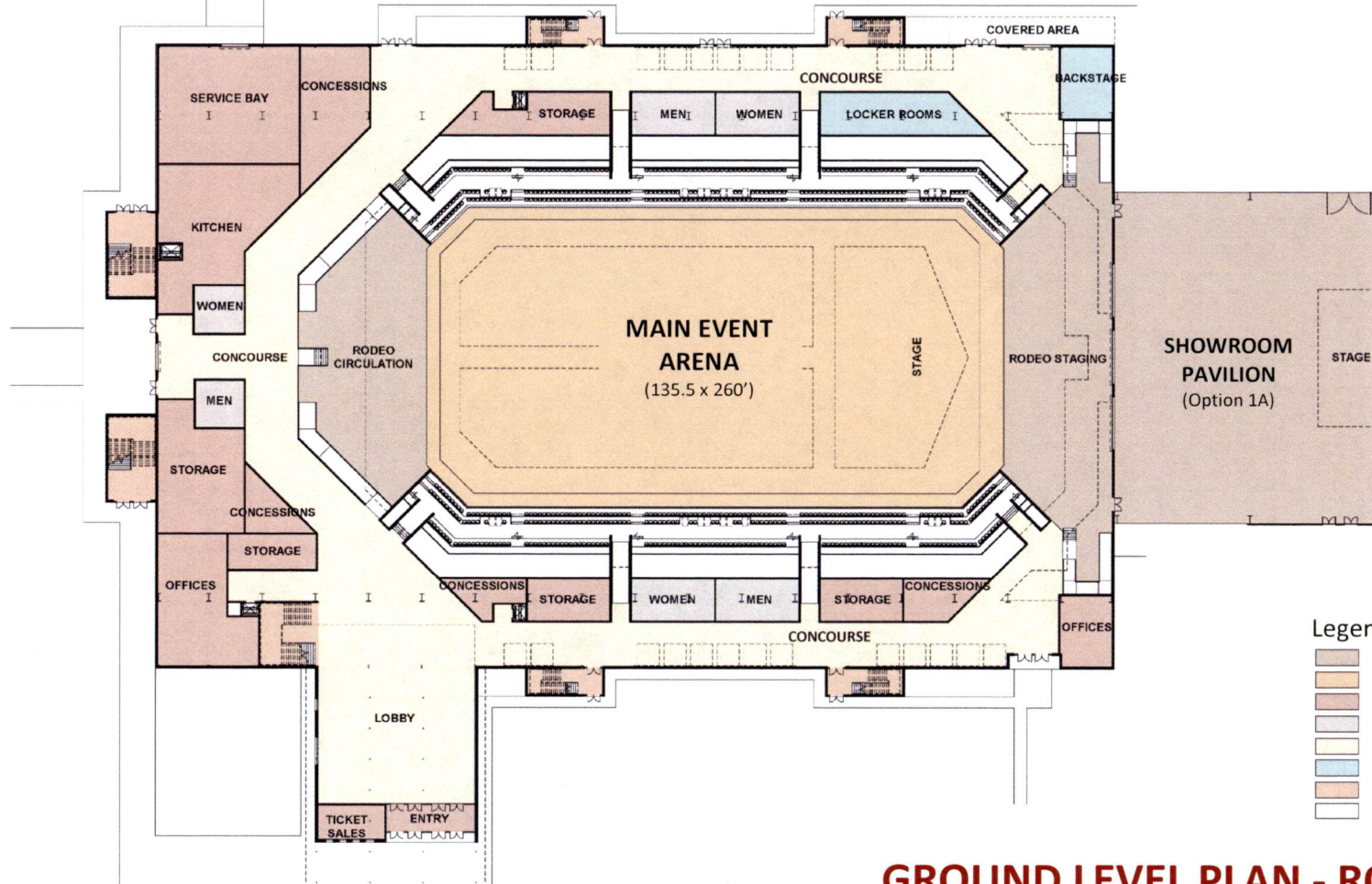
Kitchen

Catering Service Design
Rough in for Full Commercial Kitchen
Service to Banquet Hall + Suites
Delivery Dock

Technology - TBD

Arena Video & Score Boards
Wi-Fi
LED Monitors in Suites & Concourse
Digital Menu Boards
Sound System and Lighting
Broadcast Headend

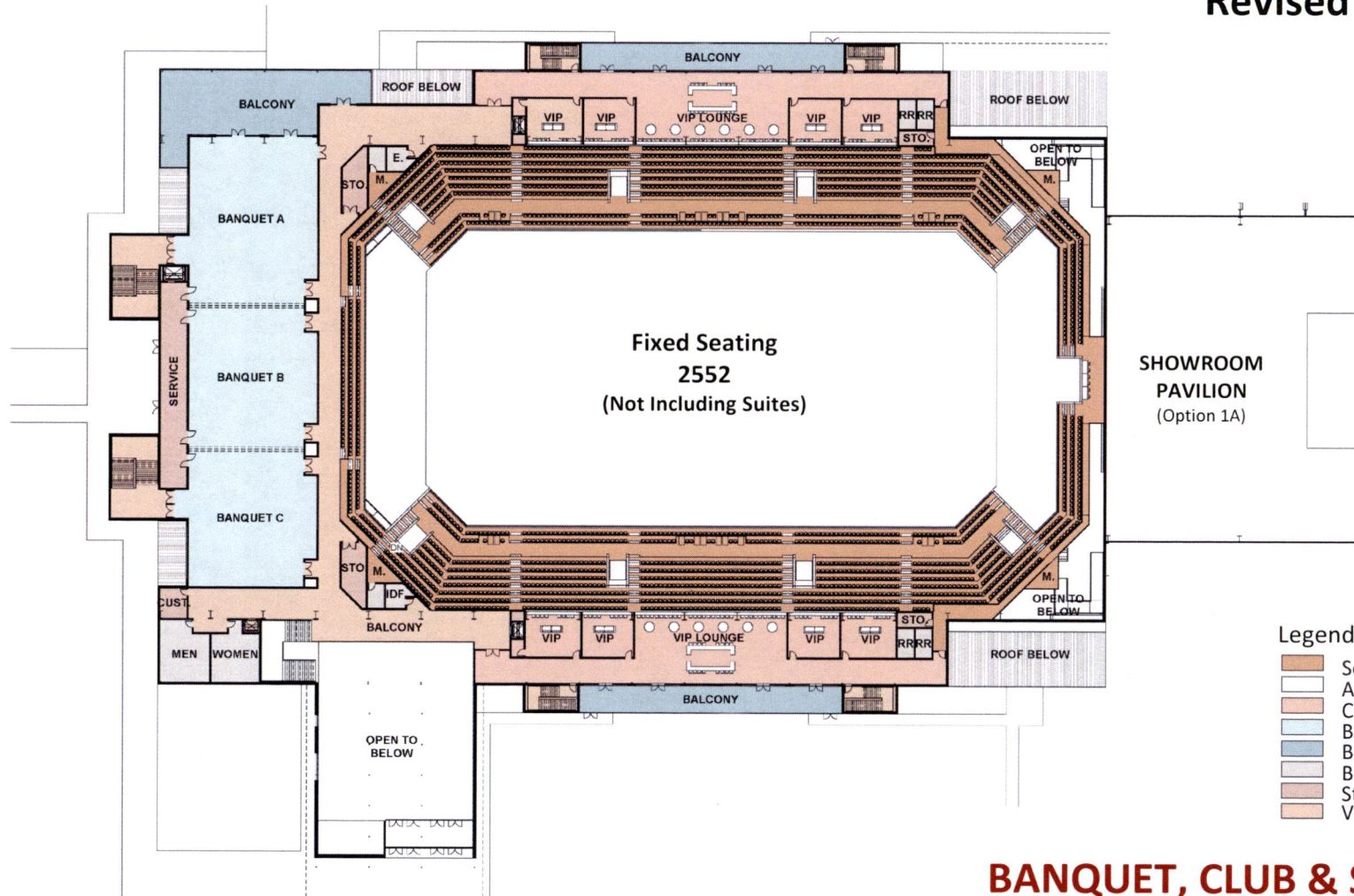
Revised Scheme 3



- Legend**
- Animal Areas
 - Arena
 - Arena Staff
 - Building Support
 - Circulation
 - Performers
 - Vertical Circulation
 - Vomitory & Underside

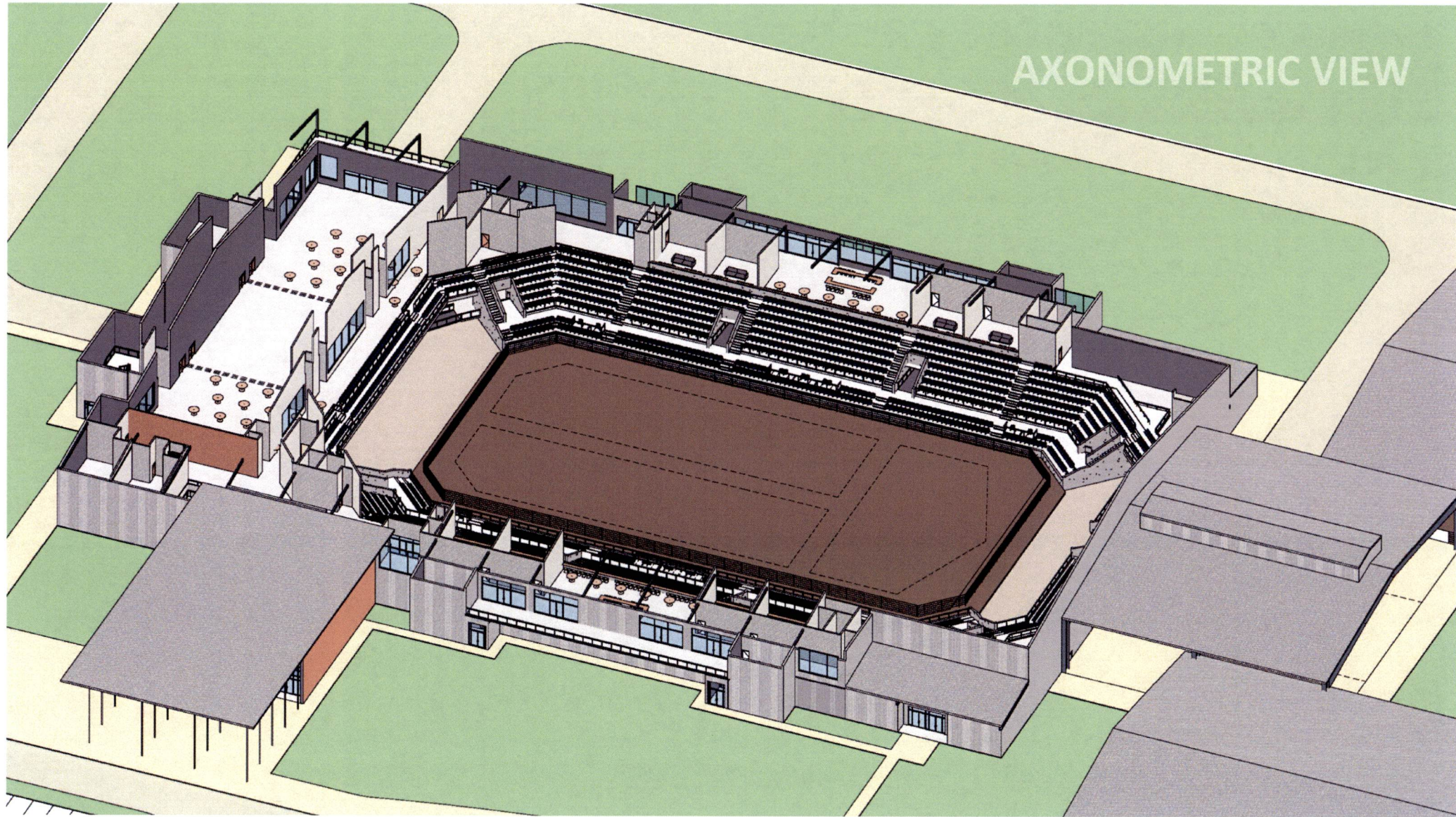
GROUND LEVEL PLAN - RODEO EVENT

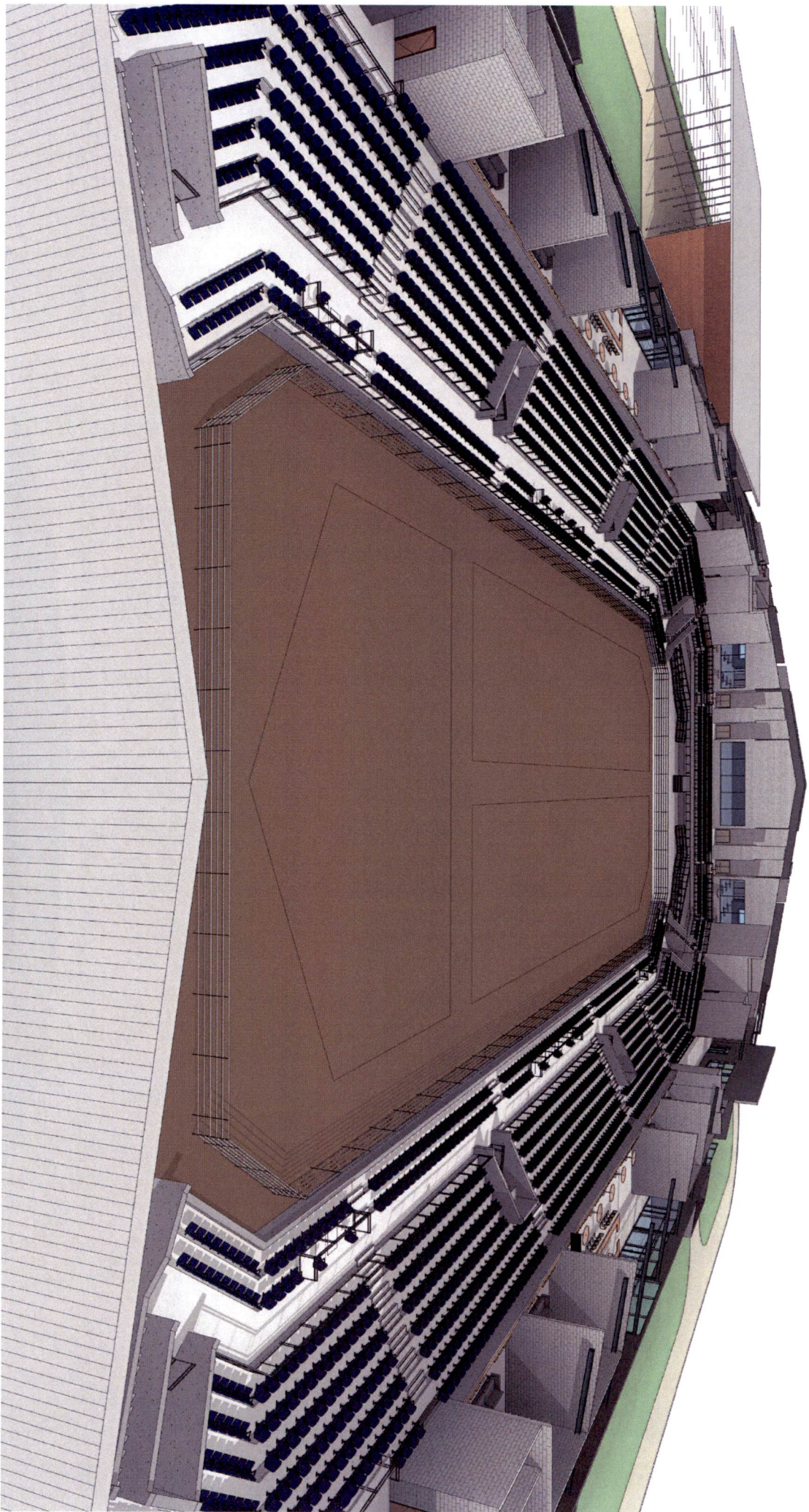
Revised Scheme 3

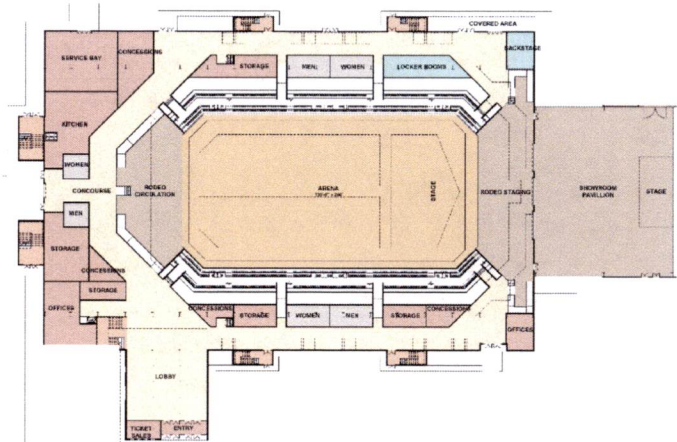


BANQUET, CLUB & SUITE LEVEL

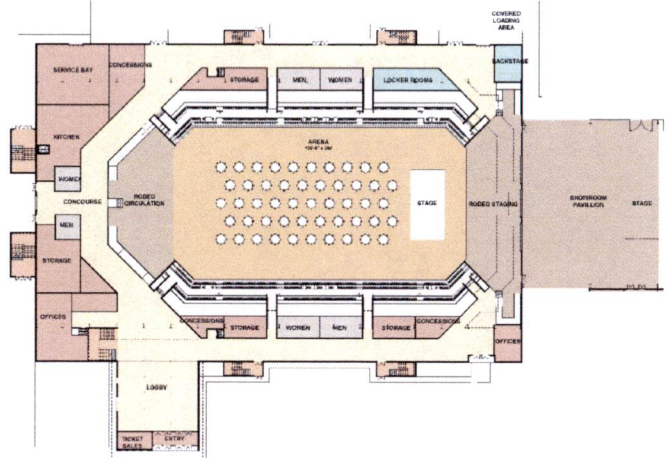
AXONOMETRIC VIEW



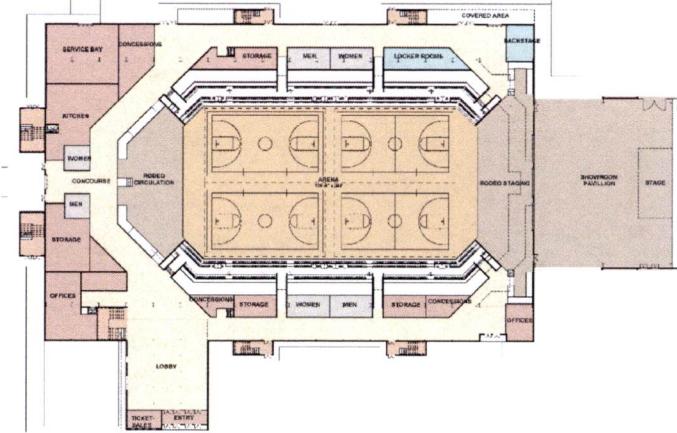




RODEO EVENTS



BANQUET, CONCERT & TRADE SHOW

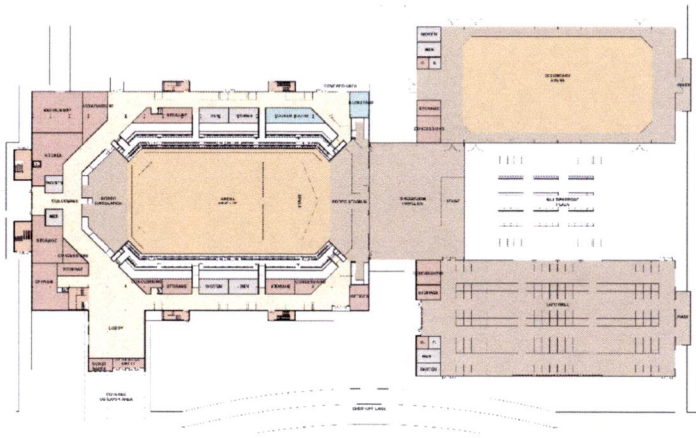


BASKETBALL & VOLLEYBALL COURTS

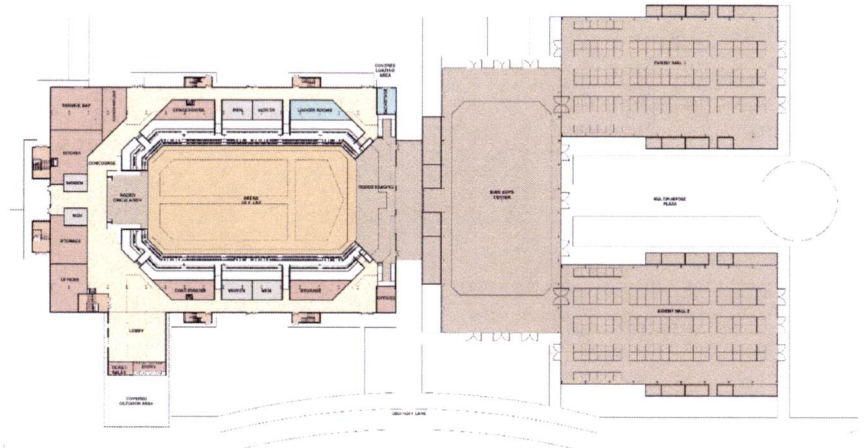
- Legend**
- Arena
 - Event Staging
 - Arena Staff
 - Building Support
 - Circulation
 - Performers & Lockers
 - Vertical Circulation
 - Vomitory & Underside

MAIN ARENA EVENT CONFIGURATIONS

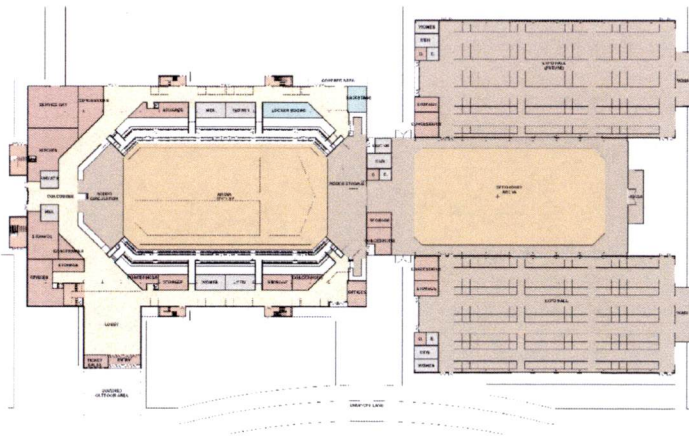
Expo Center Configurations



OPTION 1A



OPTION 1B

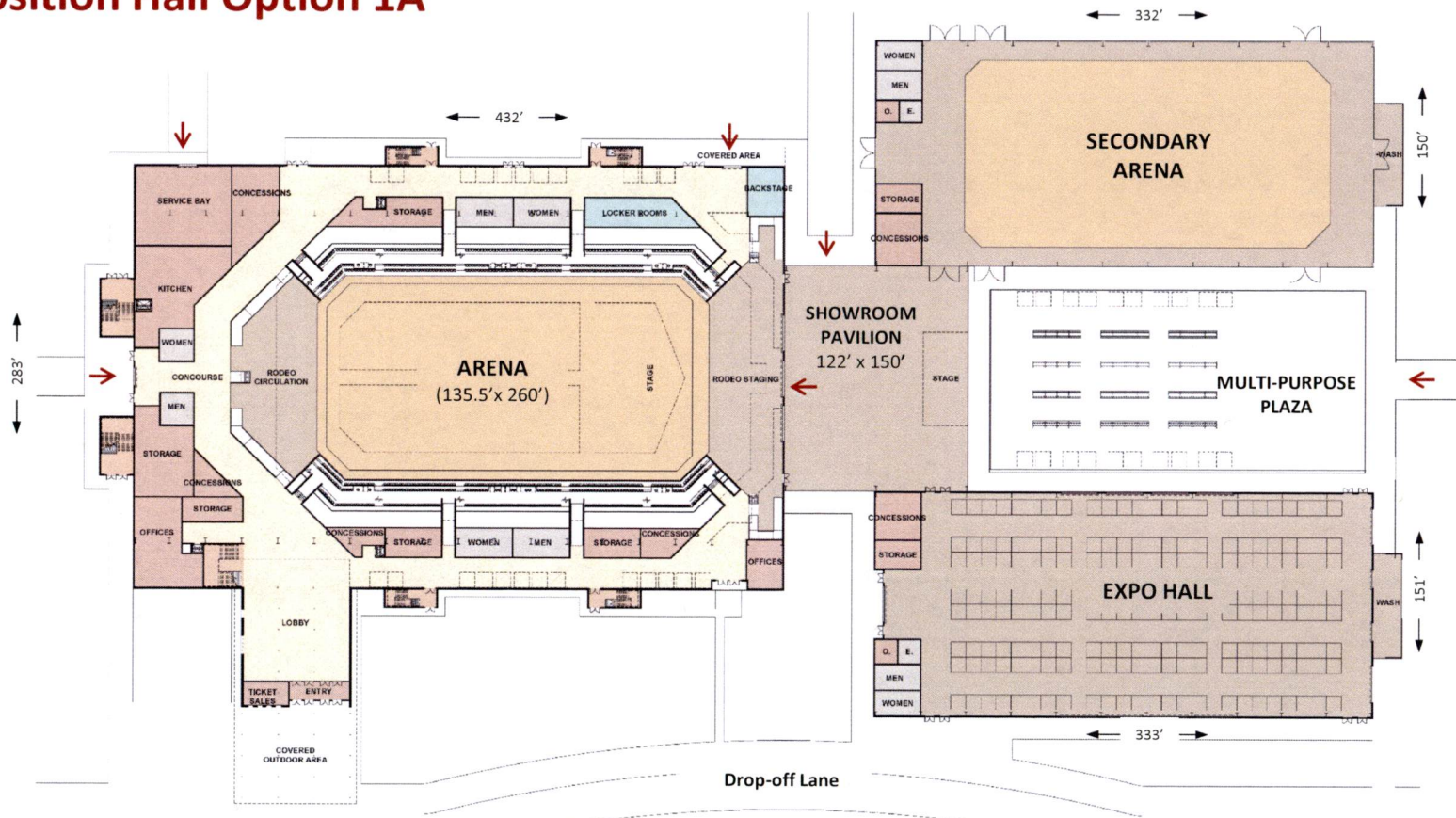


OPTION 1C



EXPOSITION HALL CONFIGURATIONS

Exposition Hall Option 1A

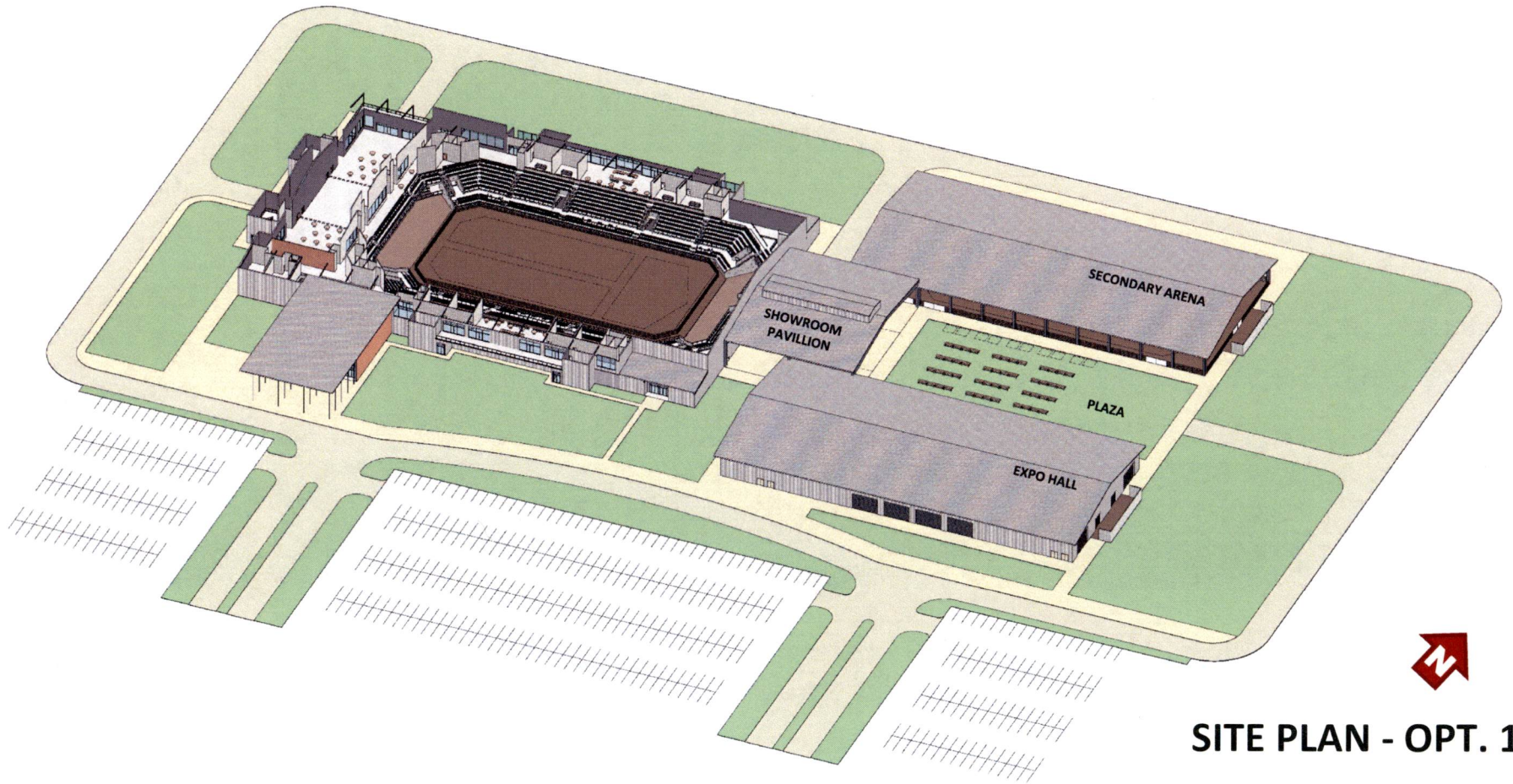


→
ARENA SERVICE /LOADING



Webb County

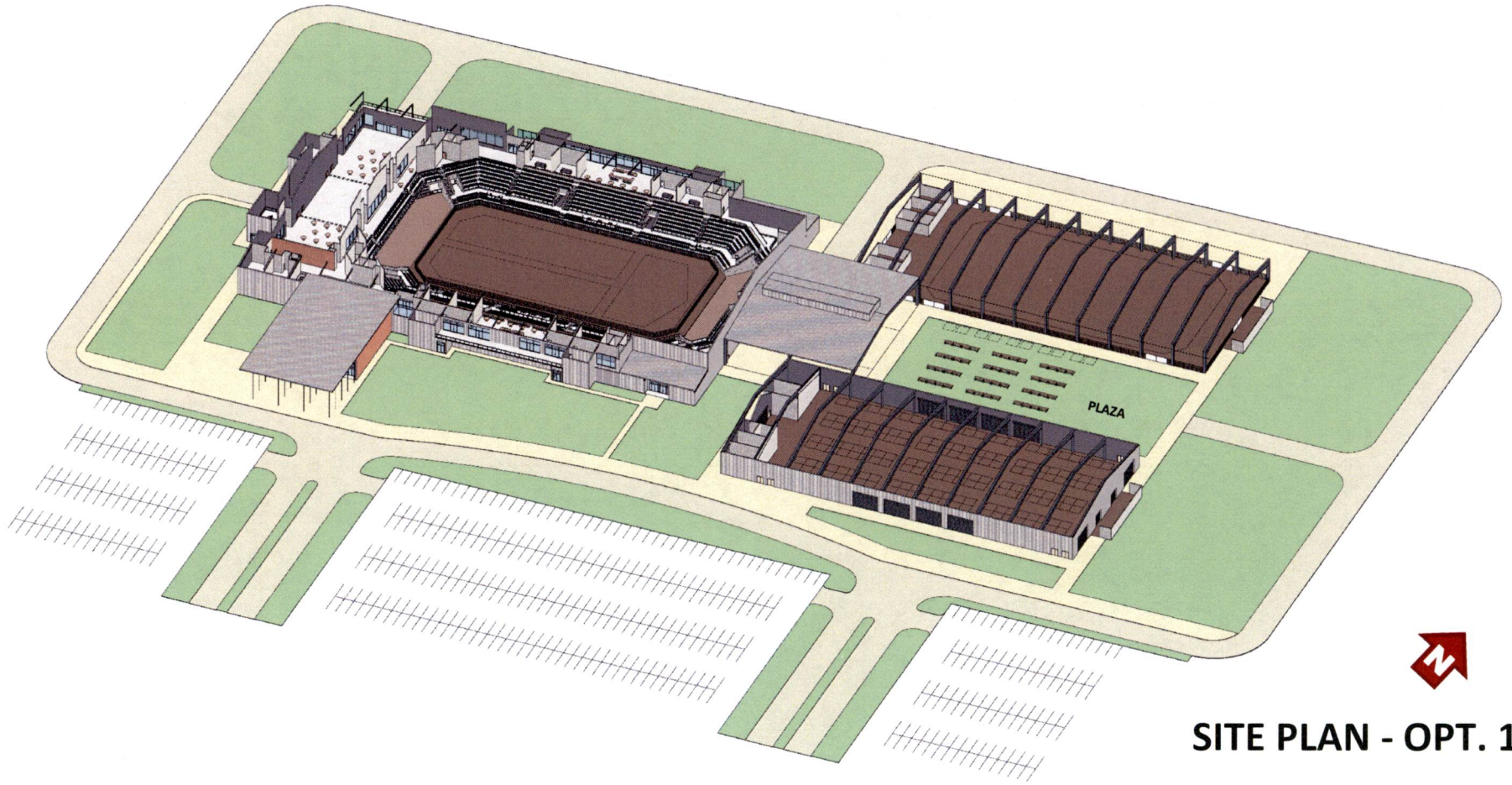
Webb County Fairgrounds Arena



SITE PLAN - OPT. 1A

Webb County

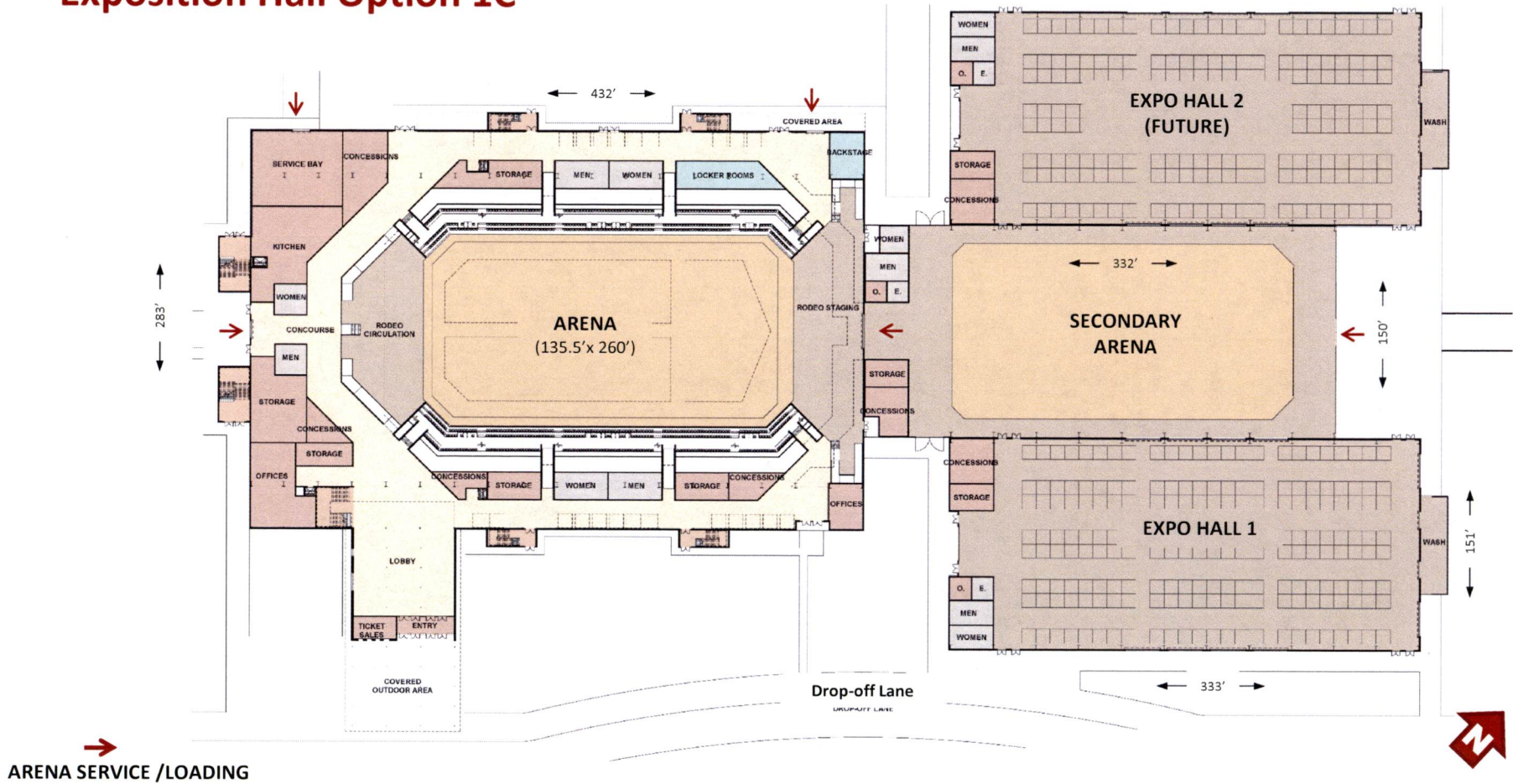
Webb County Fairgrounds Arena



SITE PLAN - OPT. 1A

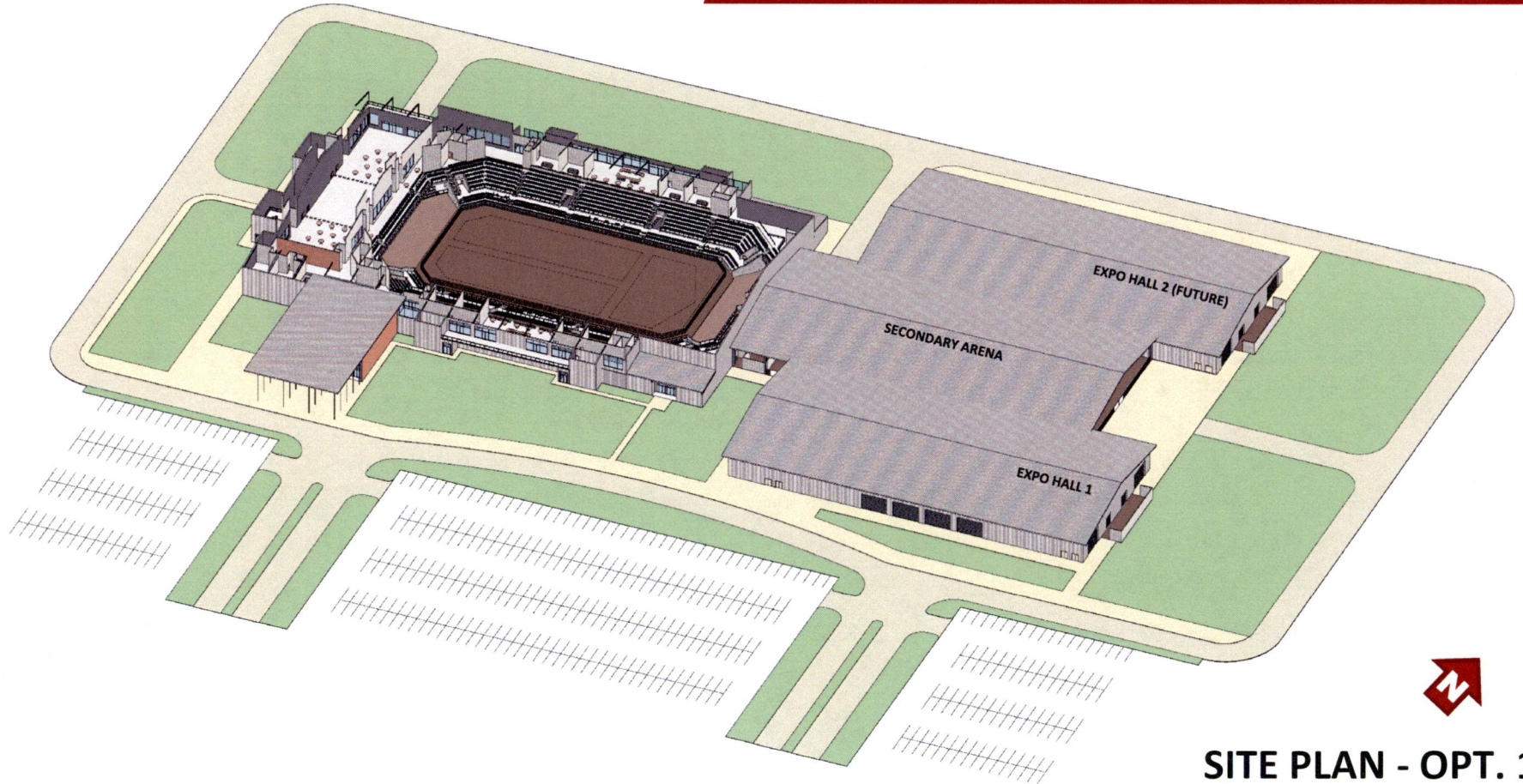
Option 1C

Exposition Hall Option 1C



Webb County

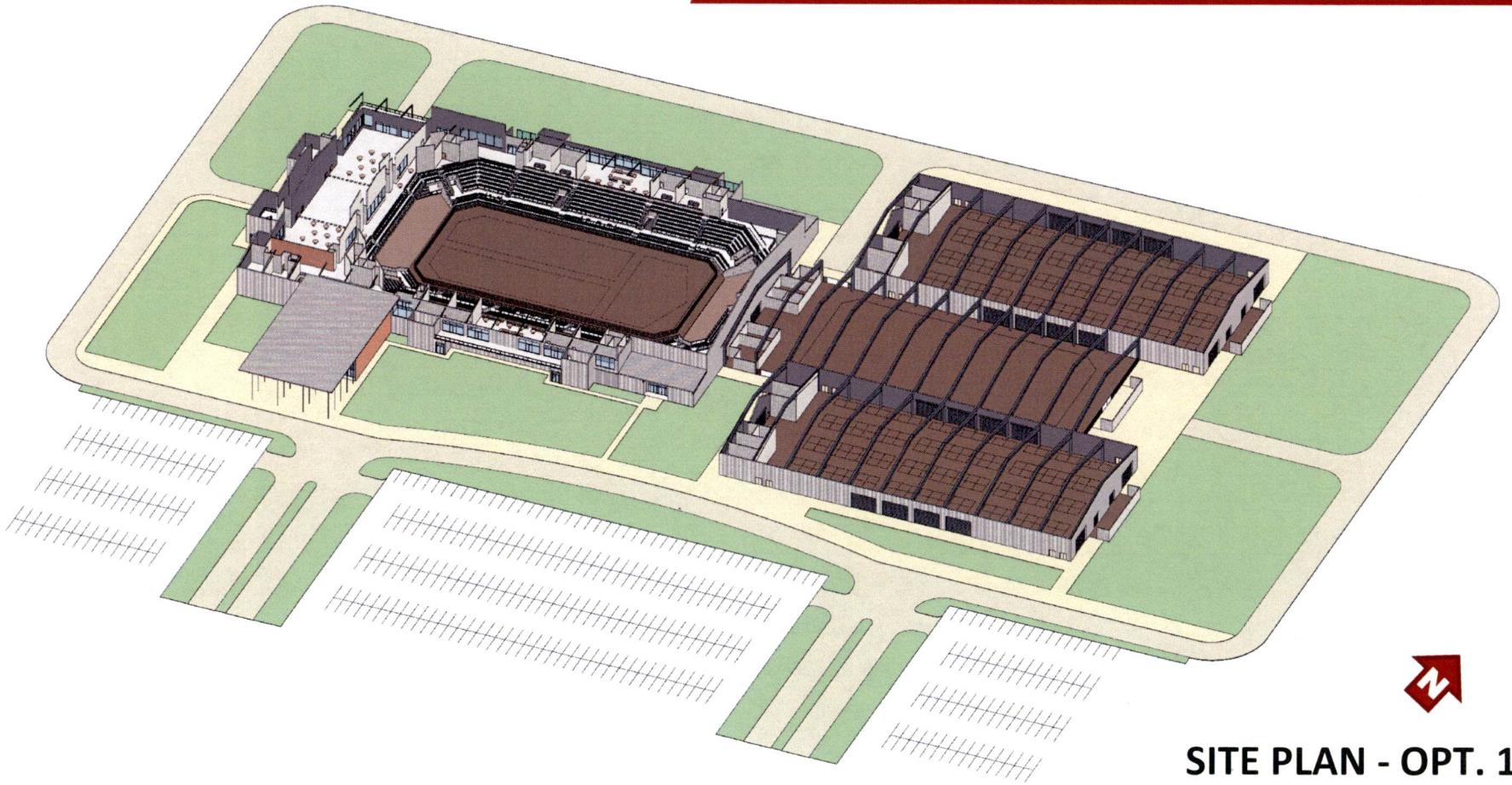
Webb County Fairgrounds Arena




SITE PLAN - OPT. 1C

Webb County

Webb County Fairgrounds Arena



SITE PLAN - OPT. 1C

Program Summary

SCHEME 2 - PRESENTED 8/22/22

DESCRIPTION	ENCLOSED AREA (GROSS SF)	COVERED AREA (GROSS SF)
1 ARENA AREA	34,015	
2 RODEO STAGING	5,540	
3 ENTRY /LOBBY /TICKETING	5,326	
4 CIRCULATION	20,358	
5 FIXED SEATING	21,027	
6 VIP SUITES (8)	2,905	
7 VIP LOUNGE	7,230	
8 CONCESSIONS	2,206	
9 BANQUET HALL	15,218	
10 KITCHEN	3,009	
11 CONCOURSE	0	
12 ARENA SUPPORT	13,817	
13 RODEO AND LIVESTOCK	8,644	22,600
14 AUXILARY / RESTROOMS / STORAGE	21,568	13,550
SUB-TOTAL	160,863	36,150

TOTAL ENCLOSED AREA 160,863
 TOTAL COVERED AREA 36,150
MAIN EVENT ARENA TOTAL 197,013

ANIMAL EXPO CENTER 60,595
 NEW MULTI-PURPOSE PAVILLION 22,500

REVISED SCHEME 3

DESCRIPTION	ENCLOSED AREA (GROSS SF)	COVERED AREA (GROSS SF)
1 ARENA AREA	34,522	
2 RODEO STAGING	7,478	
3 ENTRY /LOBBY /TICKETING	5,335	
4 CIRCULATION	32,420	
5 FIXED SEATING	27,094	
6 VIP SUITES (8)	4,156	
7 VIP LOUNGE	8,237	
8 CONCESSIONS	3,085	
9 BANQUET HALL	11,863	
10 KITCHEN	2,877	
11 CONCOURSE	0	
12 ARENA SUPPORT	6,046	
13 RODEO AND LIVESTOCK	5,545	
14 AUXILARY / RESTROOMS / STORAGE	20,067	9,076
SUB-TOTAL	168,725	9,076

TOTAL ENCLOSED AREA 168,725
 TOTAL COVERED AREA 9,076
MAIN EVENT ARENA TOTAL 177,801

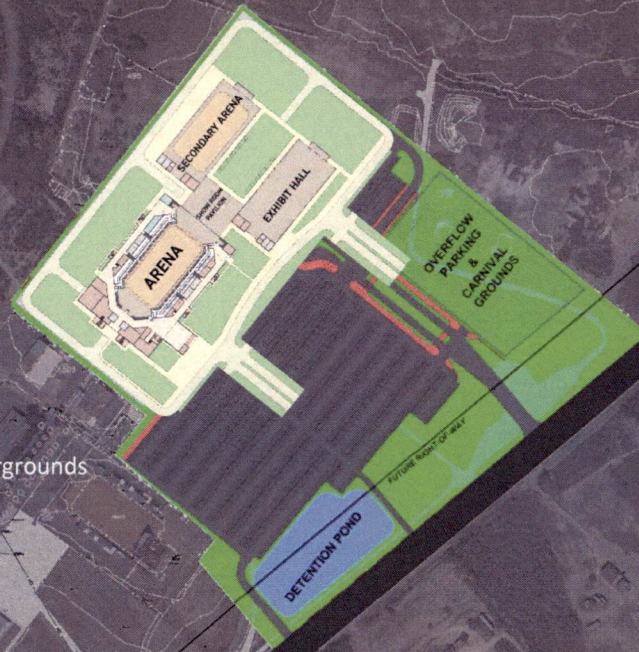
SECONDARY ARENA 51,244
 EXPO HALL 50,900
 SHOWROOM PAVILION 18,300 (Opt. 1A)

PROPOSED ARENA LOCATION

Lake Casa Blanca

Camp Huisache
Scout Camp

Existing Fairgrounds




N
SITE PLAN