



WEBB COUNTY FAIRGROUNDS ARENA



Commissioners Court Meeting
Schematic Design Review
November 14, 2022



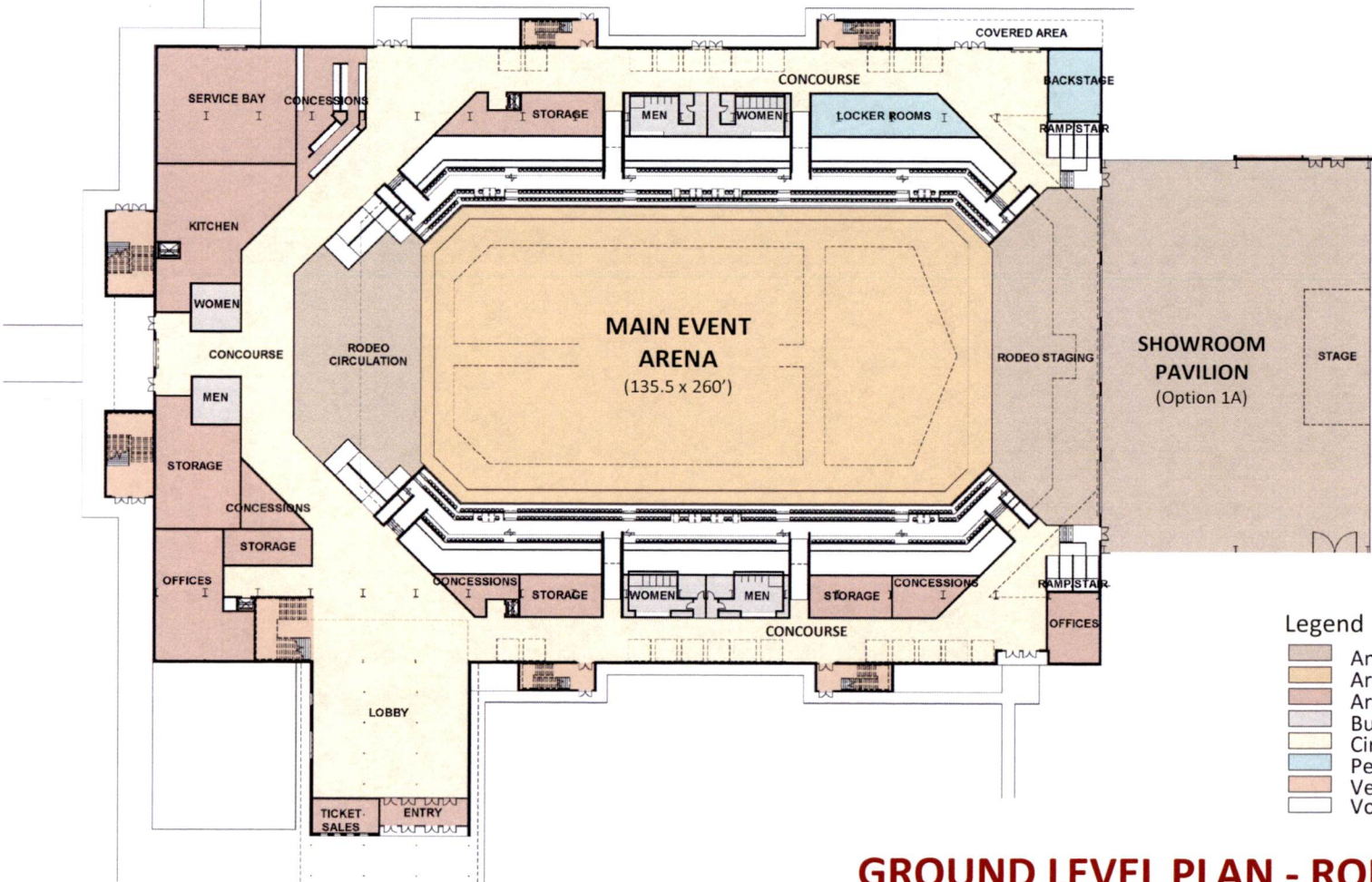
Commissioners Court Review Comments

10.11.22

Recap

- Site Options 1A, 1B, and 1C presented
- Option 1C was selected with the further review of Option 1A
- Flip Secondary Arena and Expo Hall location
- Request for Rodeo equipment layouts; Provide restrooms, locker room and First Aid room
- Extend Judge's box and eliminate openings above the rodeo staging
- Arena Seating System preliminary comparison
- Multiple entry drive approach to Arena Complex with drop-off lanes

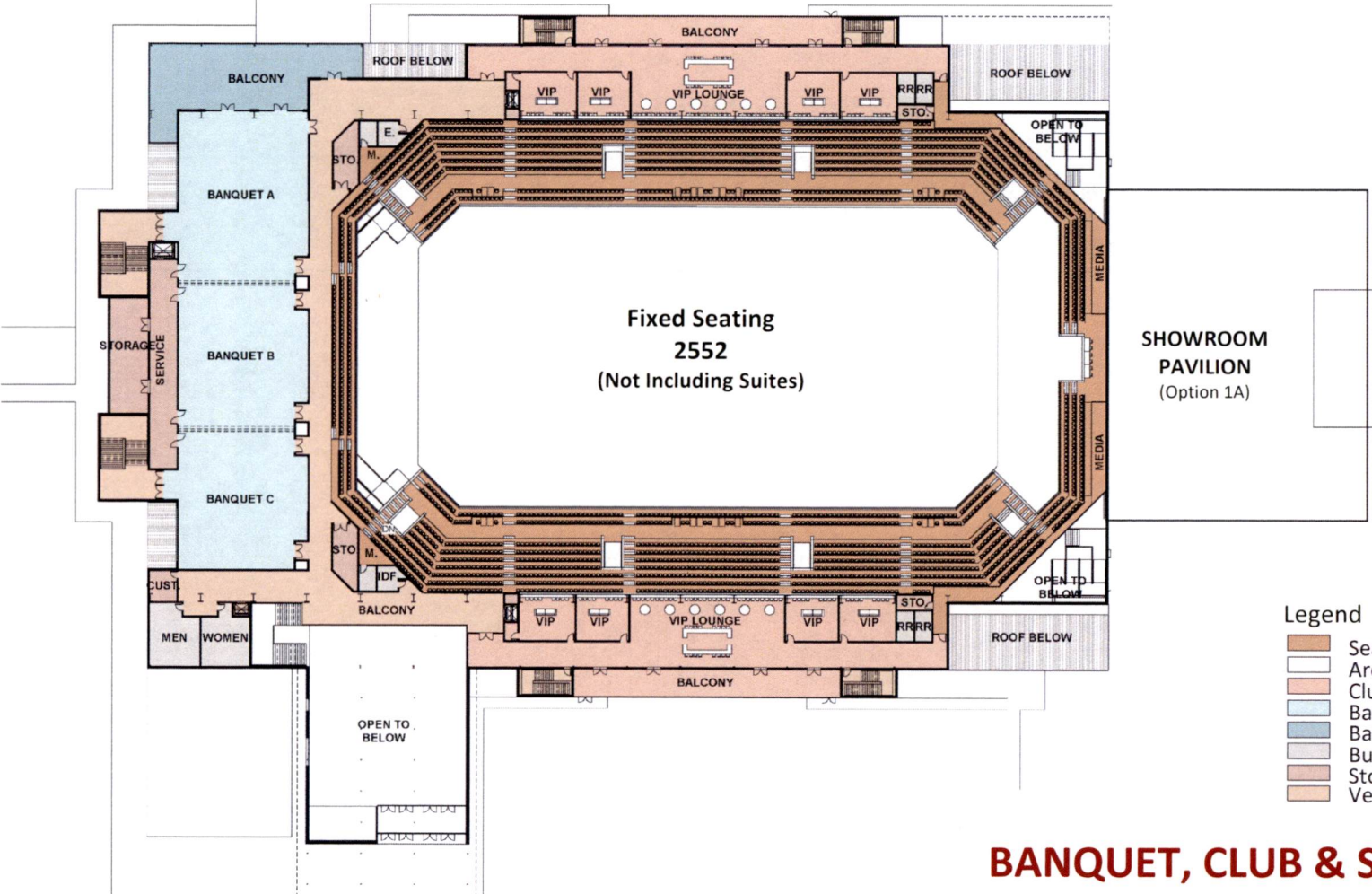
Updated Arena Scheme 3



- Legend
- Animal Areas
 - Arena
 - Arena Staff
 - Building Support
 - Circulation
 - Performers
 - Vertical Circulation
 - Vomitory & Underside

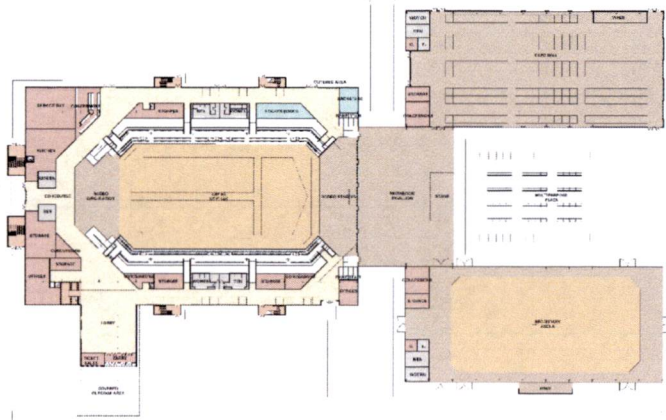
GROUND LEVEL PLAN - RODEO EVENT

Updated Arena Scheme 3

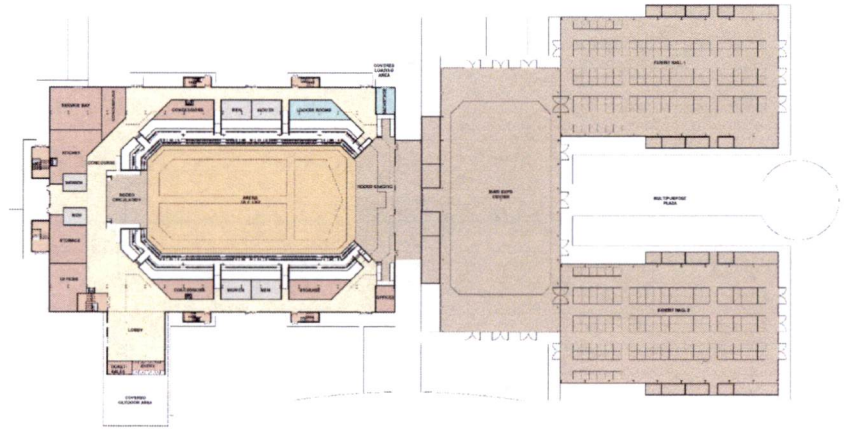


- Legend**
- Seating Areas
 - Arena
 - Club & Suite Area
 - Banquet Hall
 - Balcony
 - Building Support
 - Storage
 - Vertical Circulation

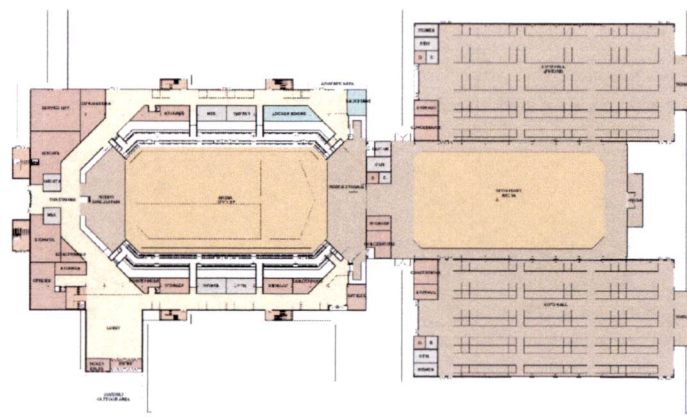
Expo Hall Configurations



OPTION 1A.1 - Updated for Additional Discussion



OPTION 1B

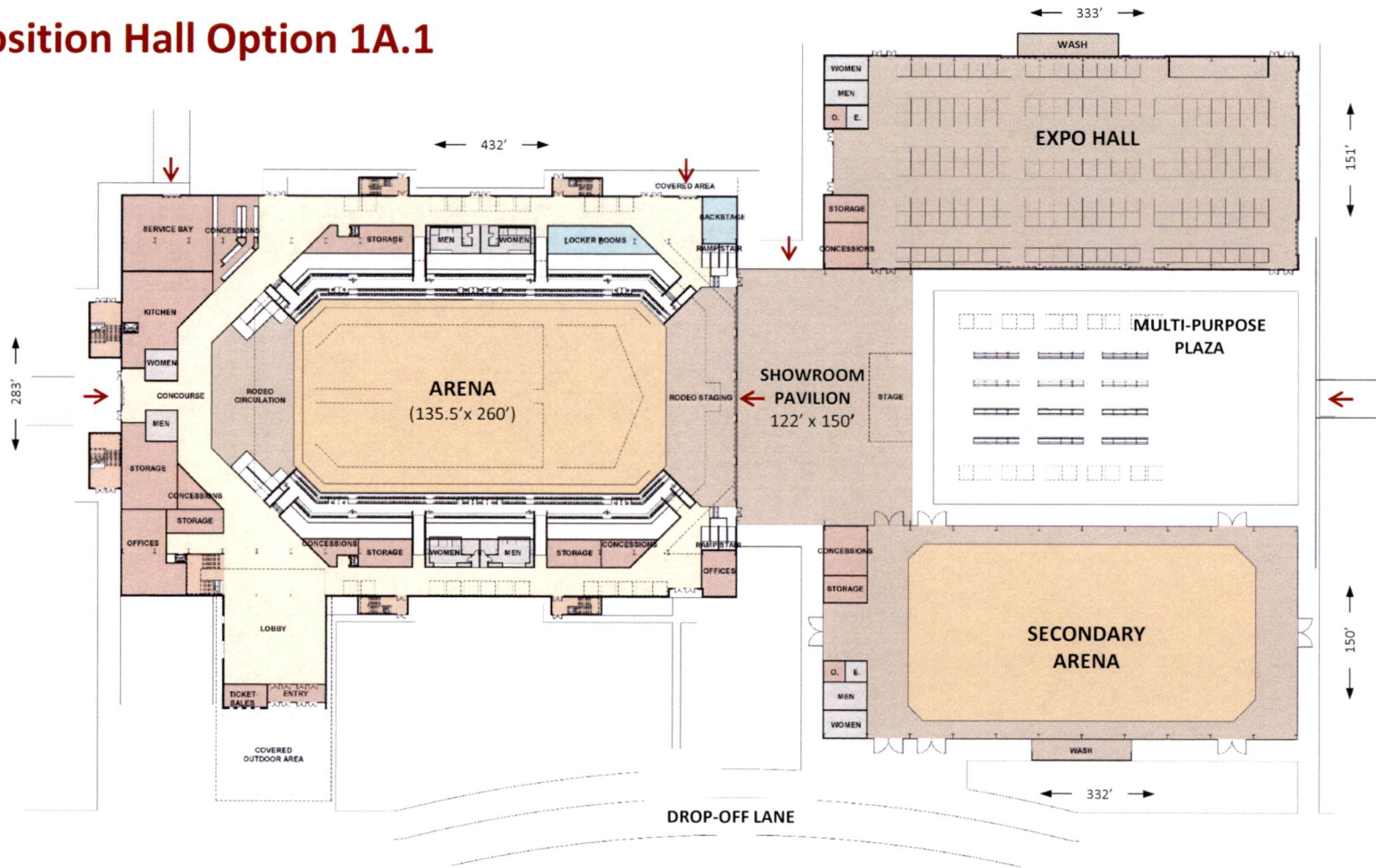


OPTION 1C - Approved on 10/11/22



EXPOSITION HALL CONFIGURATIONS

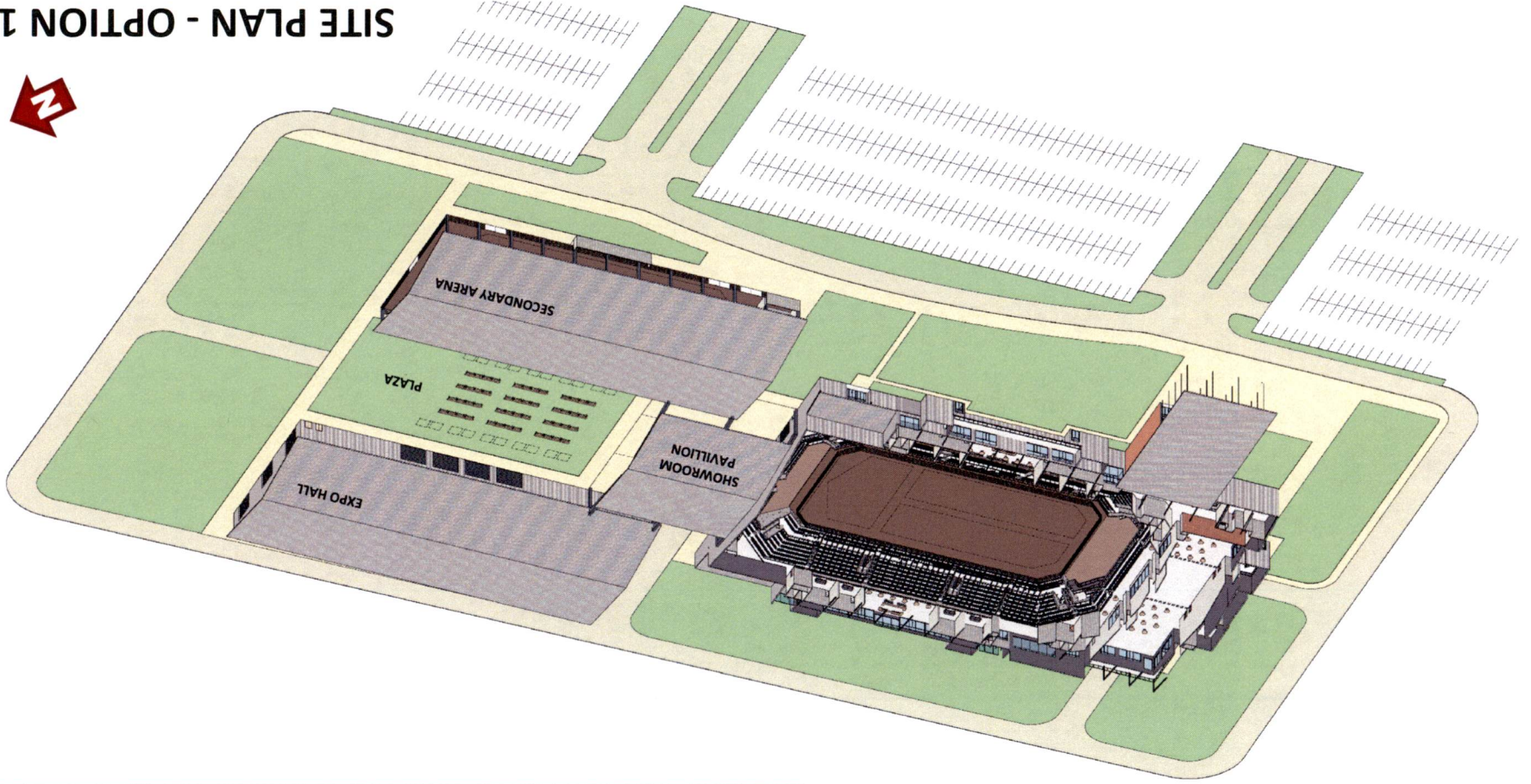
Exposition Hall Option 1A.1



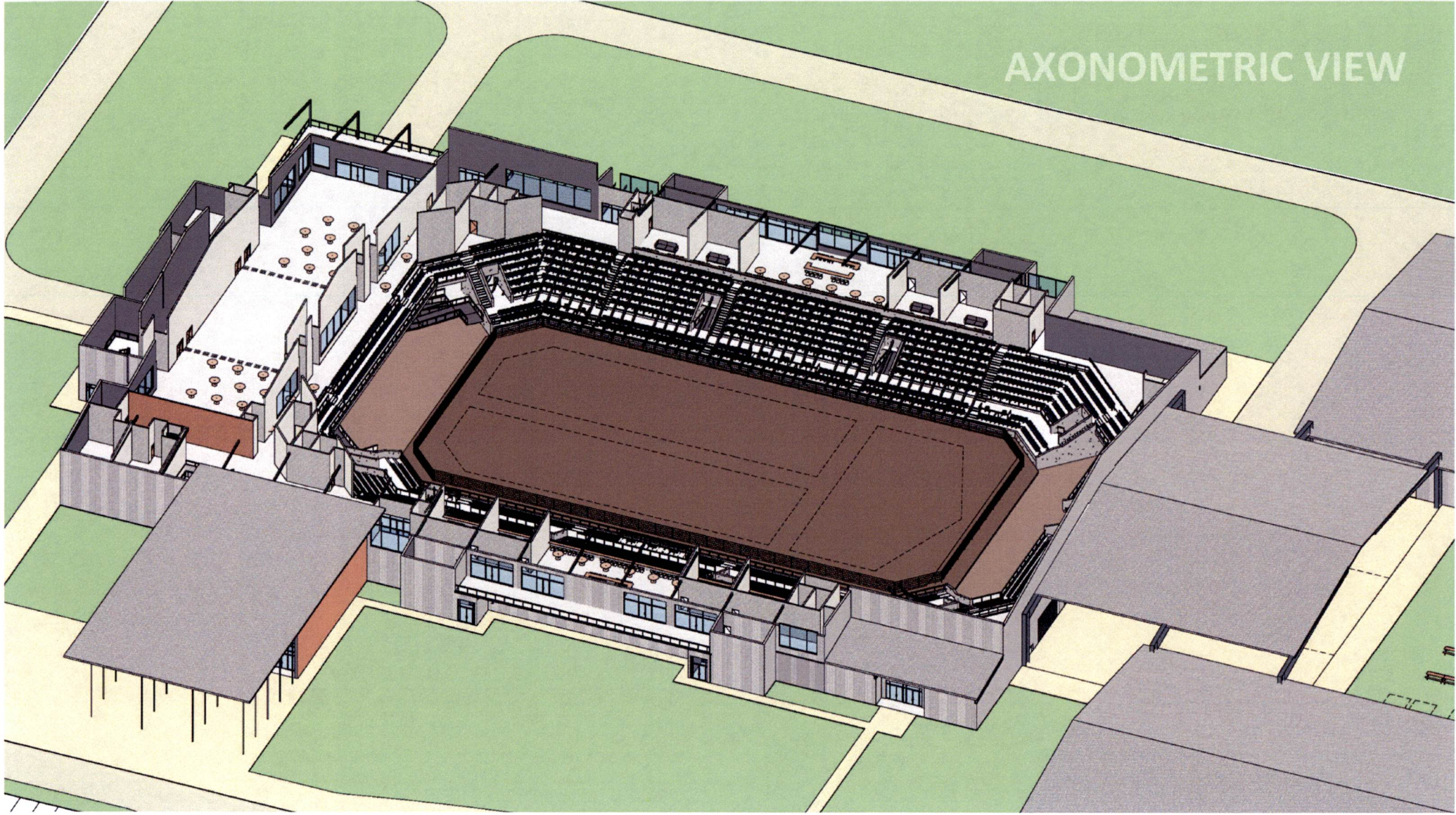
Webb County

Webb County Fairgrounds Arena

SITE PLAN - OPTION 1A.1

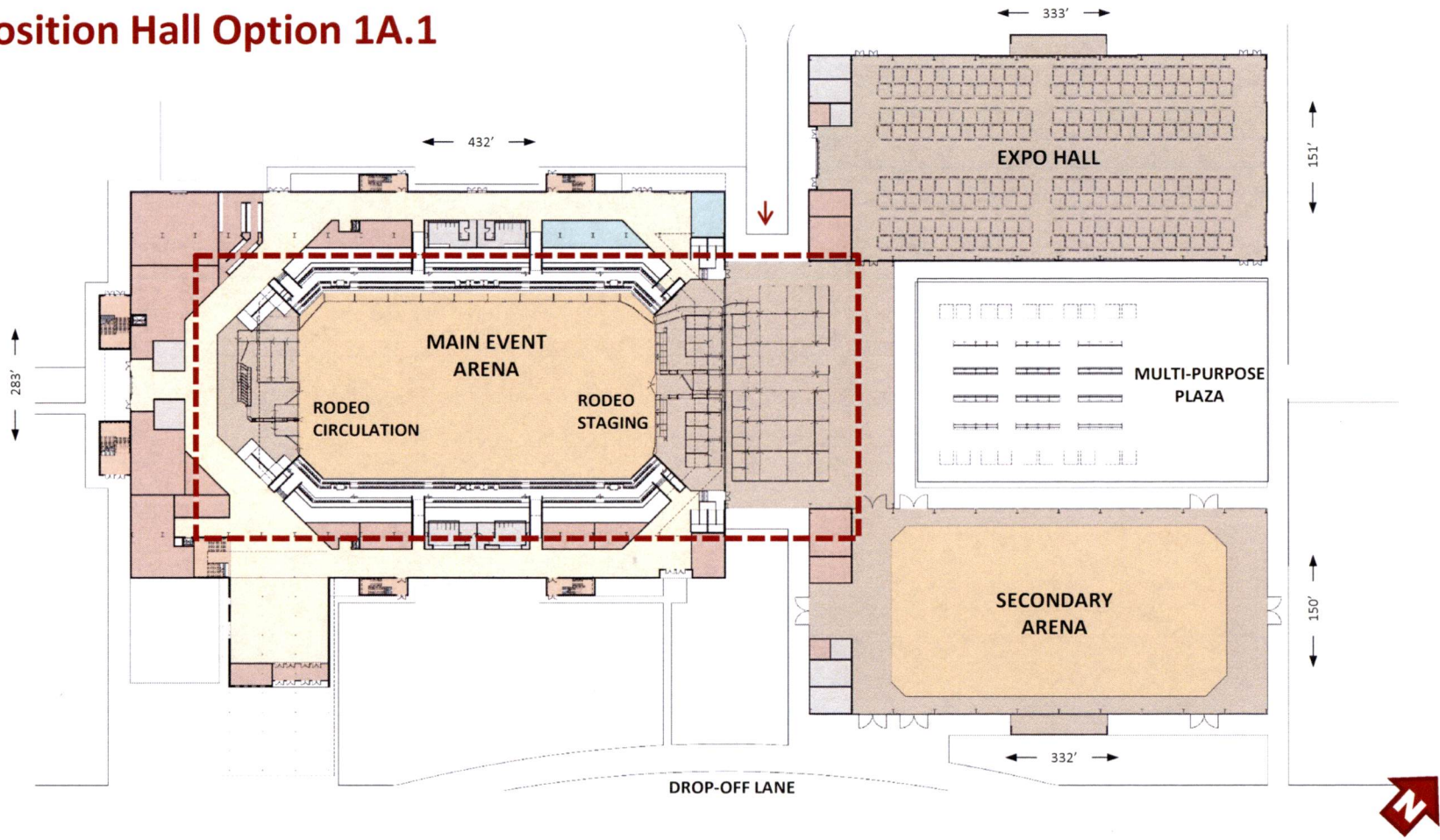


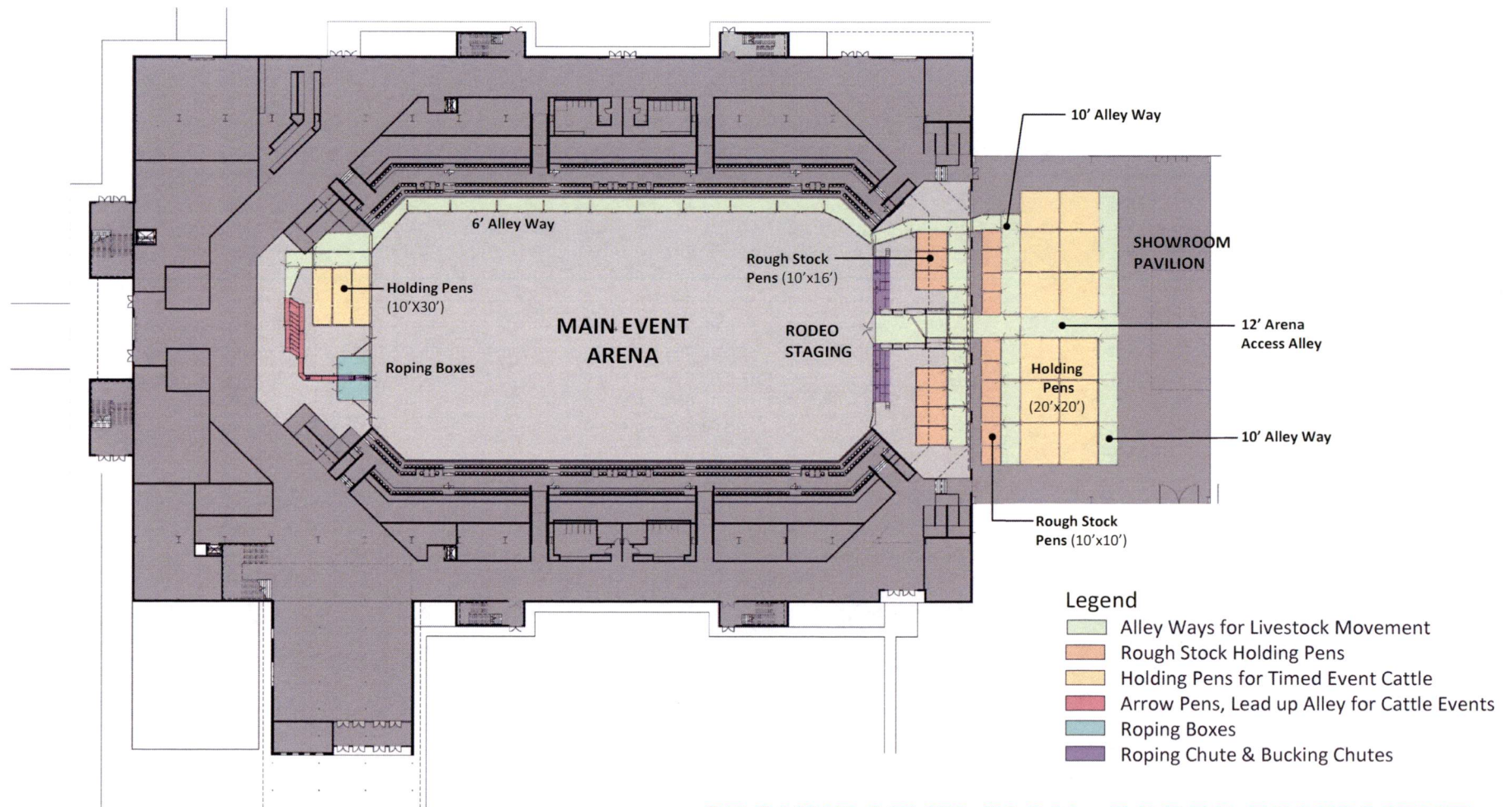
AXONOMETRIC VIEW



Rodeo Equipment

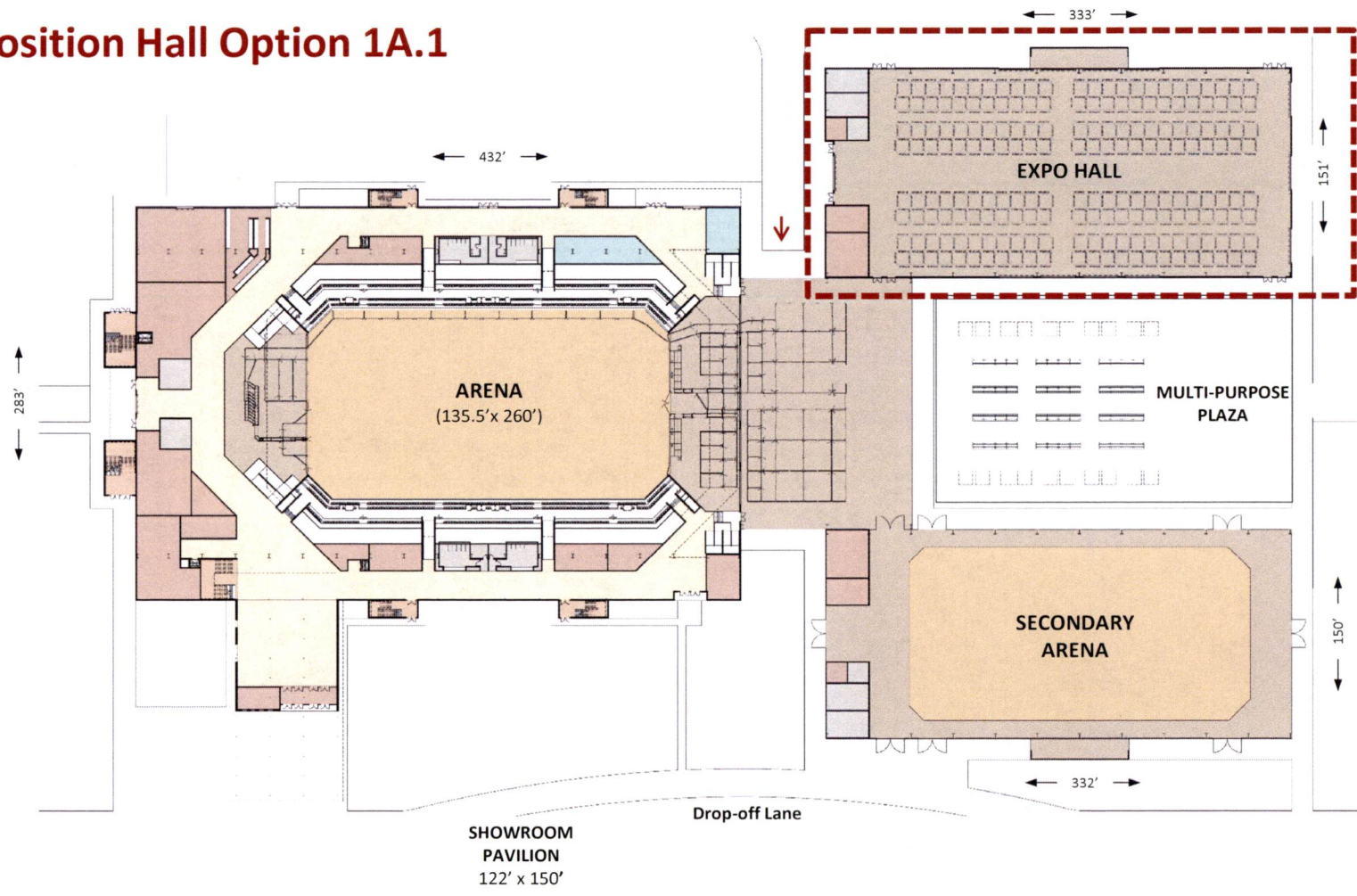
Exposition Hall Option 1A.1



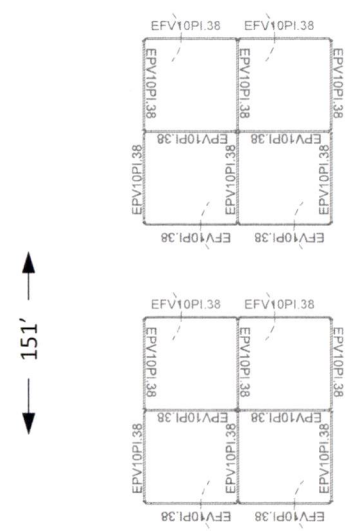
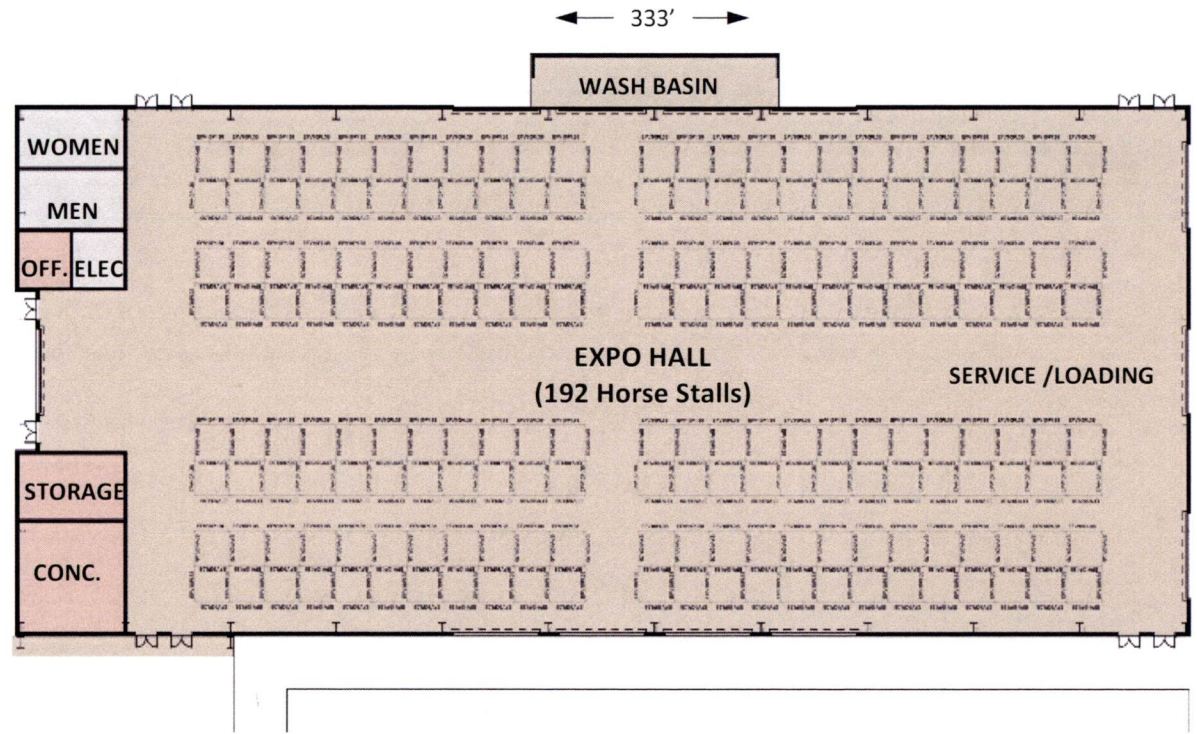


GROUND LEVEL PLAN - RODEO EQUIPMENT

Exposition Hall Option 1A.1



Exposition Hall Option 1A.1



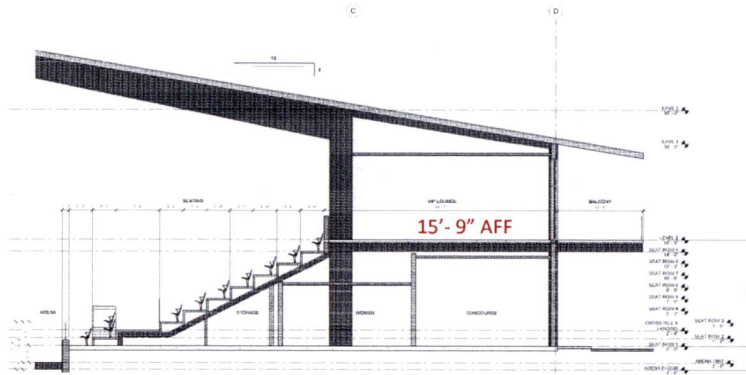
**TYPICAL STALL BARN
10'x10'**



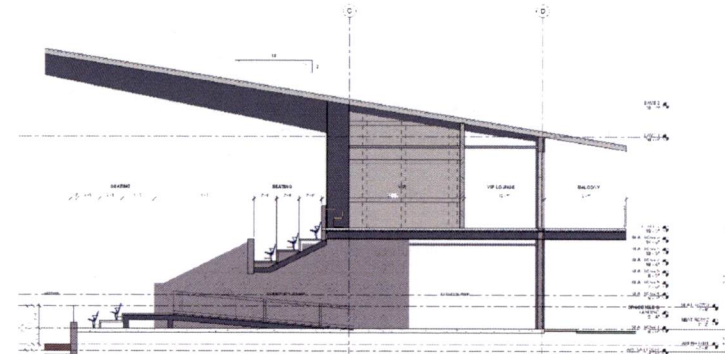
EXPO HALL PLAN - RODEO EQUIPMENT

Arena Seating Systems

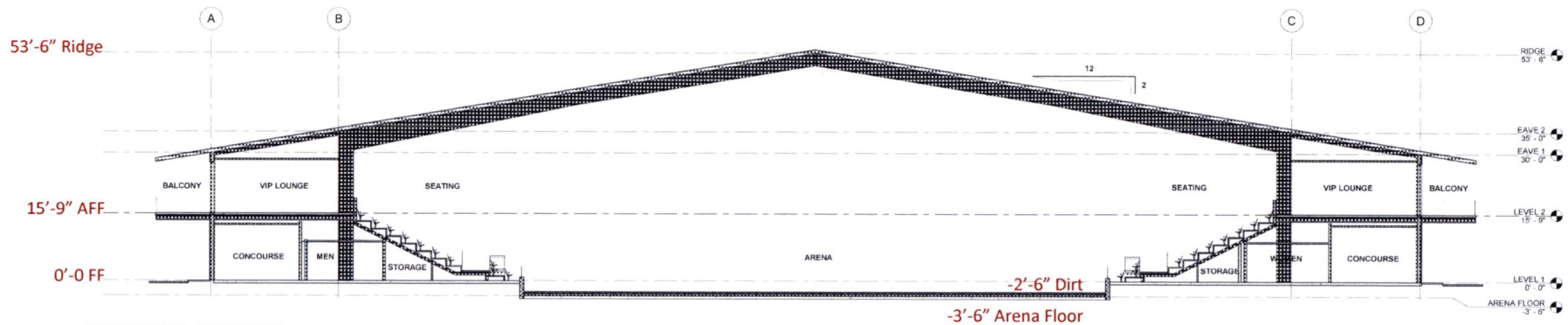
Types of Seating Systems



TYPICAL BUILDING SECTION



BUILDING SECTION @ VOMITORY

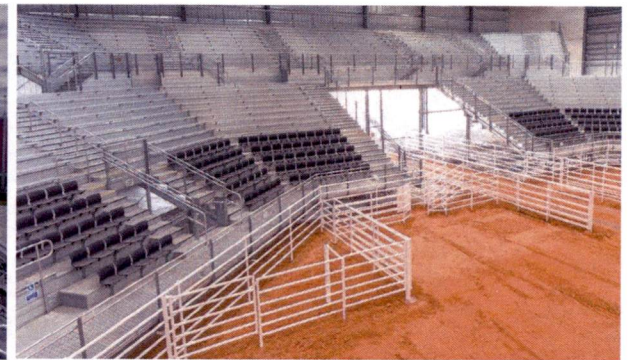


BUILDING SECTION

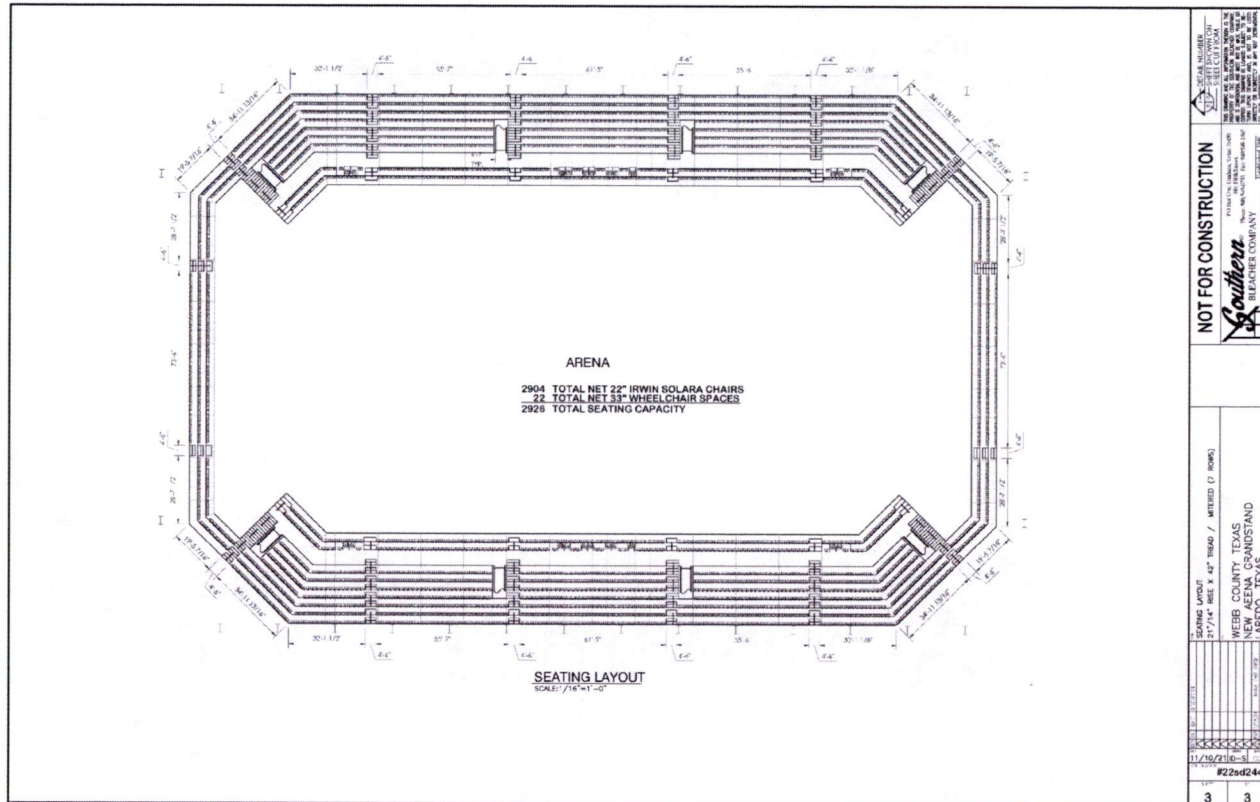
Precast Concrete Seating Structures



Aluminum Seating Structures



Aluminum Seating Structures



PRELIMINARY SEATING LAYOUT

22sd244

Arena Seating System Comparison

TYPE OF FABRICATION	PREFAB ALUM /STEEL BLEACHERS	PRECAST BLEACHERS & STRUCTURE
BLEACHER ELEMENTS		
SEATING RISERS	X	X
WALL PANELS	X	X
STAIRS / STEPS	X	X
SEATS (2552)	X	NIC
SUBTOTAL	N/A	\$2,500,000

BLEACHER STRUCTURE		
RAKERS	X	X
COLUMNS	X	X
TIE BEAMS	X	X
TOTAL COST*	\$1,148,400	\$4,250,000

- * 1. MANUFACTURER'S PRELIMINARY ESTIMATES
- 2. ASSUMED SCOPE, DOES NOT REFLECT ACTUAL STRUCTURAL DESIGN OR FINAL SEATING SELECTION.
- 3. FOUNDATION COST NOT INCLUDED.

Questions

